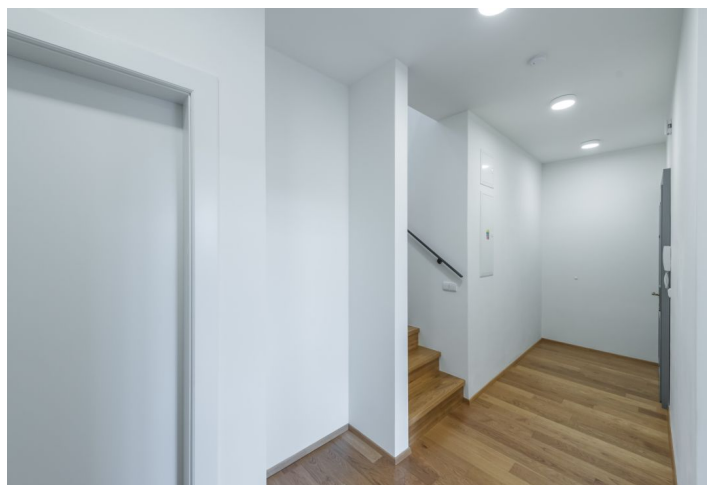




## Apartment Two-bedroom (3+kk)

Rented

108 m<sup>2</sup>, Prague 10, Vršovice, Charkovská





## Apartment Two-bedroom (3+kk)

Rented

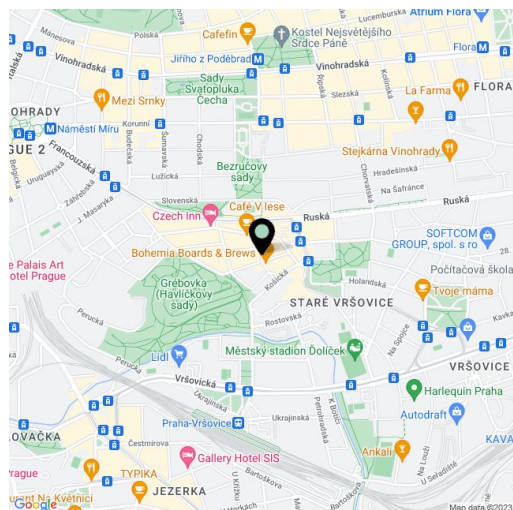
108 m<sup>2</sup>, Prague 10, Vršovice, Charkovská

Total area	119 m <sup>2</sup>
Floor area*	108 m <sup>2</sup>
Balcony	4 m <sup>2</sup>
Terrace	7 m <sup>2</sup>
Parking	On-site garage parking available.
Garage	Yes
Cellar	Yes
PENB	D
Reference number	31430
Available from	Immediately

**Modern air-conditioned 2-bedroom 2-bathroom split-level attic apartment with a balcony and a terrace, on the 5th floor of a fully newly renovated residential building with a lift. Conveniently located in a quiet street near the Havlíčkovy Sady and Heroldovy Sady Parks, in an area with rich amenities and quick access to the city center. Convenient to Náměstí Míru metro station, line A.**

The lower level features a spacious living room with a fully fitted open plan kitchen and access to the **terrace**, one bedroom with a storage room and access to the **balcony**, a bathroom with a bathtub, a separate toilet, and an entrance hall. The upper floor offers an open gallery, a bedroom, and a bathroom incl. a walk-in shower and a toilet.

**Wooden floating floors**, Italian tiling, wooden windows, underfloor heating in the bathrooms, gas boiler, built-in appliances in the kitchen, dishwasher, microwave oven, **cellar**. One on-site **garage parking** space available for an additional fee. Service charges and utilities are billed separately.



\* Area of the unit according to the Civil Code. The area consists of the sum total area of the entire unit bounded by perimeter walls.