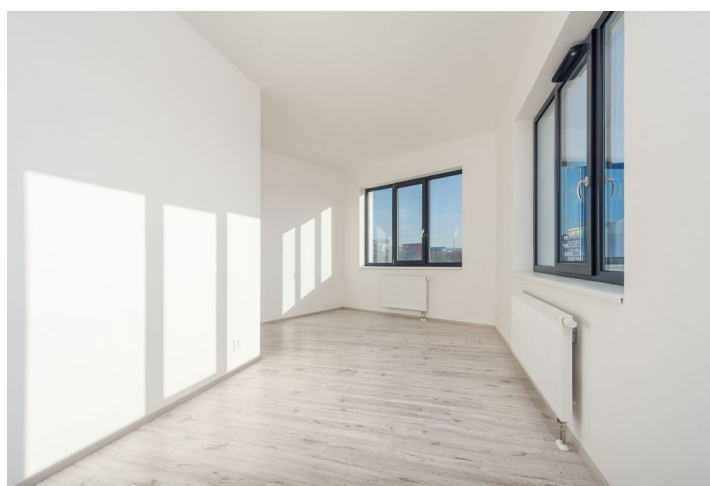
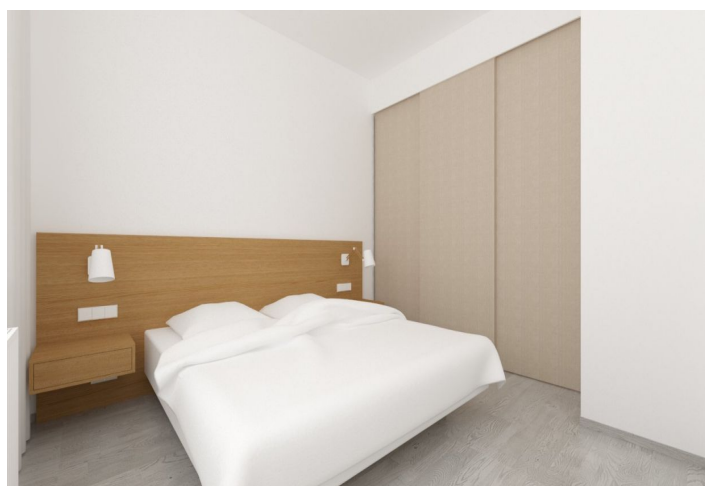
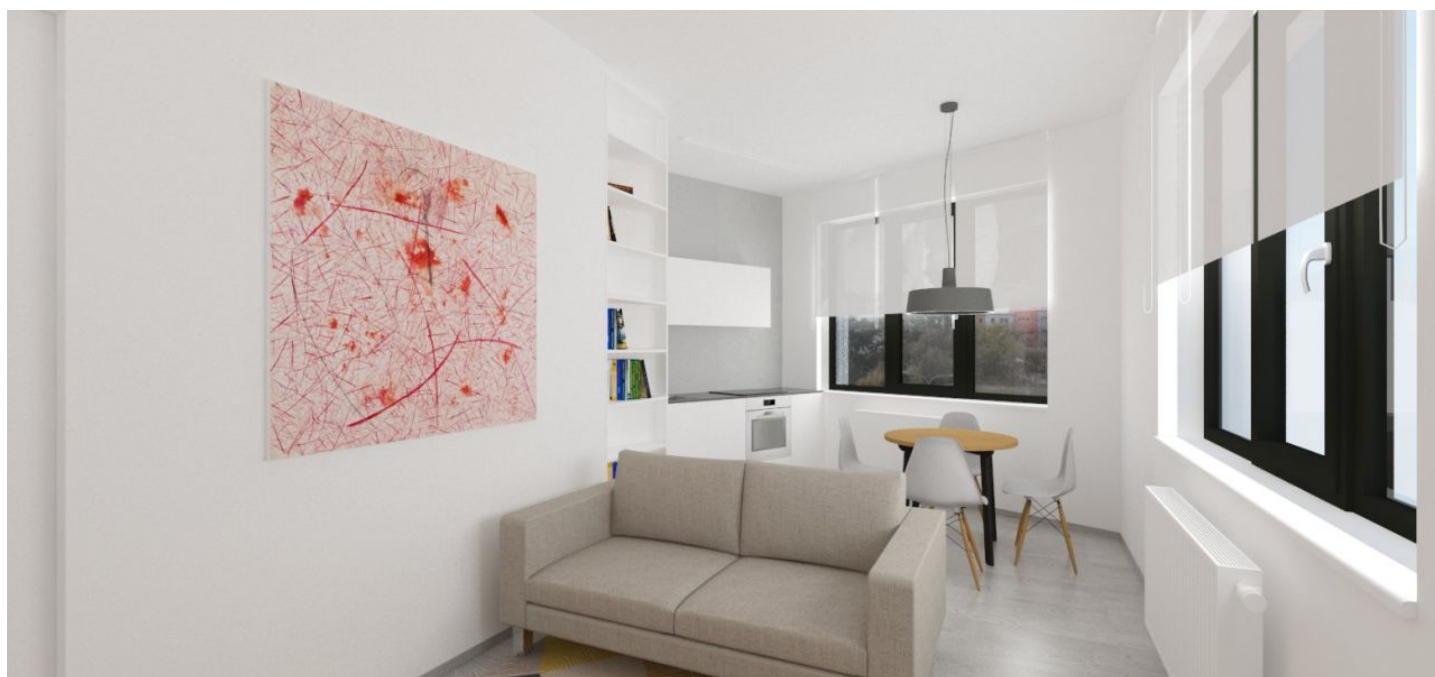




## Apartment One-bedroom (2+kk)

Rented

41 m², Brno-město, Brno - střed, Mlýnská





## Apartment One-bedroom (2+kk)

**Rented**

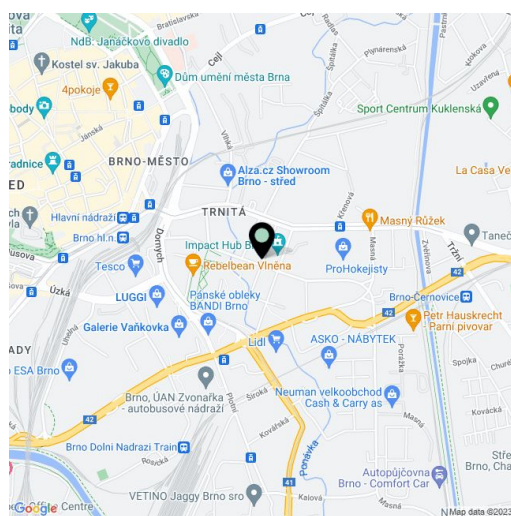
41 m², Brno-město, Brno - střed, Mlýnská

Total area	41 m²
Parking	-
Cellar	Yes
Service price	3000 CZK Not included
PENB	B
Reference number	30870
Available from	Immediately

This bright, fully furnished 1-bedroom apartment is on the second floor in the newly built Milhouse Residence designed by Chybik+Kristof Architects & Urban Designers. The modern building is located in a residential neighborhood with quick access to the city center (two stops by public transportation), near the green Svitava riverbank with a bike path. Full amenities are within easy reach incl. the Vaňkovka and Letmo shopping malls, the main train and bus stations, a post office and more. There is a tram and trolley bus stop nearby, and a brand new park will soon be created right opposite the residence.

The south-east oriented apartment features a living room with a fully fitted open kitchen and dining area, one bedroom, a bathroom with a bathtub and toilet, and an entrance hall.

Laminated floors, plastic windows, interior blinds and curtains, sliding interior doors, storage, dishwasher, **cellar**. Easy **parking** is provided free of charge in a large nearby parking lot. The photos are currently substituted by visualizations. Deposit for service charges and utilities CZK 3000 per month. Available from mid January 2019.



\* Area of the unit according to the Civil Code. The area consists of the sum total area of the entire unit bounded by perimeter walls.