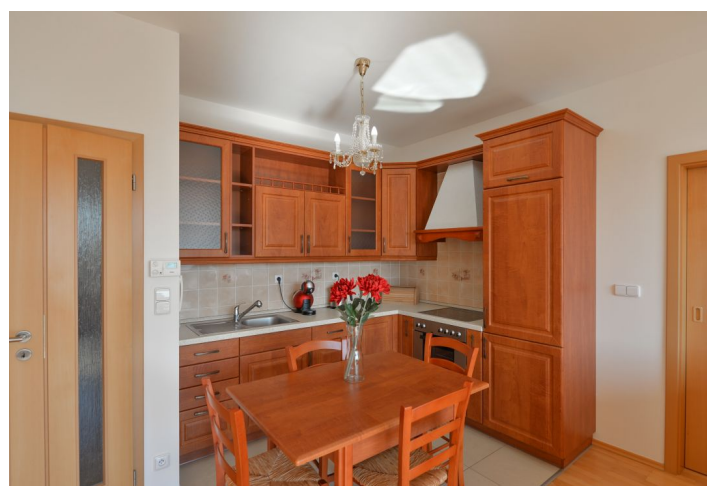




## Apartment Two-bedroom (3+kk)

Rented

69 m<sup>2</sup>, Prague 6, Řepy, Čistovická





## Apartment Two-bedroom (3+kk)

Rented

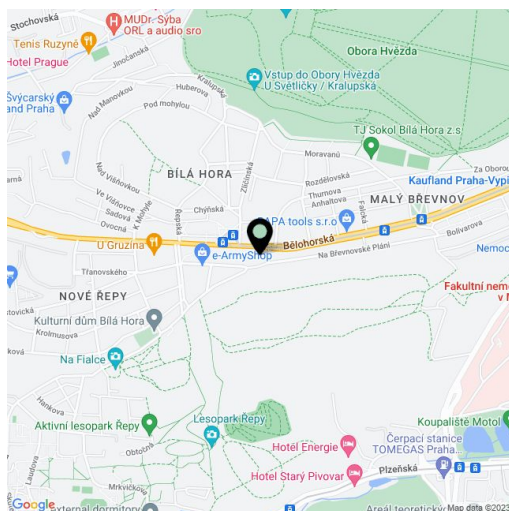
69 m², Prague 6, Řepy, Čistovická

Total area	77 m²
Floor area*	69 m²
Terrace	8 m²
Parking	Garage parking.
Garage	Yes
Cellar	Yes
PENB	C
Reference number	30635
Available from	Immediately

Fully furnished 2-bedroom flat with a south facing terrace, on the fourth top floor with lift in a gated residential project with a 24/7 reception and security, a children's playground and underground parking. Located in a quiet Prague 6 neighborhood near the Japanese School, about 15 min. by car from the city center, area with good amenities and convenient to the airport and Prague 6 international schools. Within easy reach of Divoká Šárka natural preserve and Hvězda and Ladronka Parks.

The interior includes a living room with a fully fitted open kitchen and **terrace** access, two separate bedrooms, bathroom with bathtub and toilet, and entrance hall.

**Wooden floors**, tiles, security entry door, large windows, independent gas heating, sofabed, washer, dishwasher, TV, satellite reception, **cellar**. One **garage parking space** included. Deposit for service charges and utilities CZK 8,000 per month.



\* Area of the unit according to the Civil Code. The area consists of the sum total area of the entire unit bounded by perimeter walls.