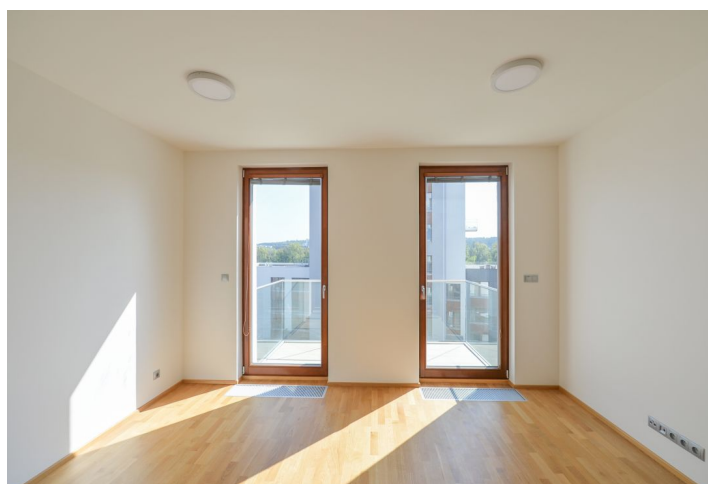




Apartment One-bedroom (2+kk)

Rented

51 m², Prague 7, Holešovice, V Háji





Apartment One-bedroom (2+kk)

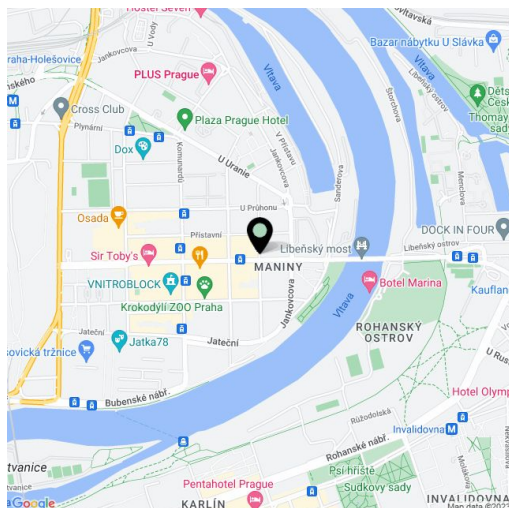
Rented51 m², Prague 7, Holešovice, V Háji

Total area	56 m ²
Floor area*	51 m ²
Balcony	5 m ²
Parking	One garage parking space included.
Cellar	Yes
PENB	B
Reference number	30425
Available from	Immediately

Benefiting from a balcony offering views of the Vltava river, this is a brand new 1-bedroom flat on the third floor of the new residential project **Rezidence nad Vltavou** with a gated courtyard incl. a children's playground. Situated in a dynamically developing part of Prague 7 - **Holešovice**, a quiet location with full amenities within easy reach and tram connections to **Vltavská** and **Nádraží Holešovice** metro stations. Excellent access to the city center, **Holešovice Squash Center**, driving range **Rohanský ostrov**, **DOX Centre for Contemporary Art**, the **Prague Market** and lots of theaters and music clubs incl. **SaSaZu**, **La Fabrika**, **Rock Opera** and **Jatka 78**.

The flat includes a living room with dining area, a fully fitted open kitchen and **balcony** offering views of the surrounding greenery and the river, one bedroom with built-in wardrobes, bathroom (bathtub with a shower screen, sink, toilet), and entrance hall with built-in wardrobes and storage.

Oak parquet floors, tiles, security entry door, French windows, blinds, central heating, dishwasher, induction cooktop, video entry phone, alarm, **cellar**, pram storage in the building. One **garage parking** space included. Deposit for service charges, water and heating CZK 2000 per month. Deposit for electricity CZK 1000 per month.



* Area of the unit according to the Civil Code. The area consists of the sum total area of the entire unit bounded by perimeter walls.