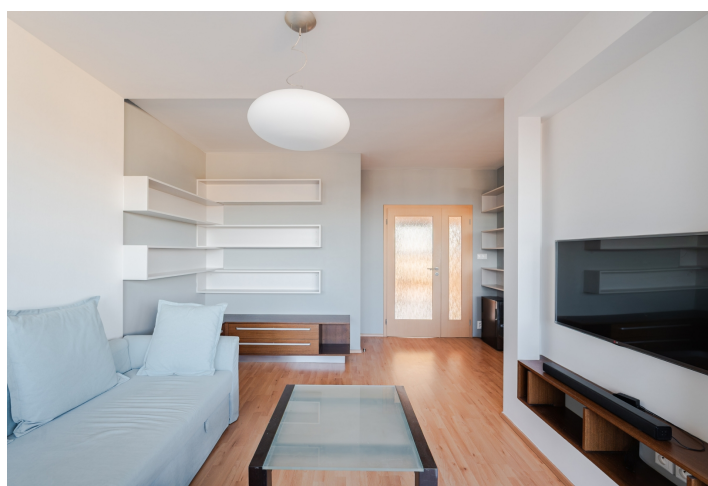




Apartment Two-bedroom (3+kk)

Rented

88 m², Prague 4, Krč, V Štíhlách





Apartment Two-bedroom (3+kk)

Rented

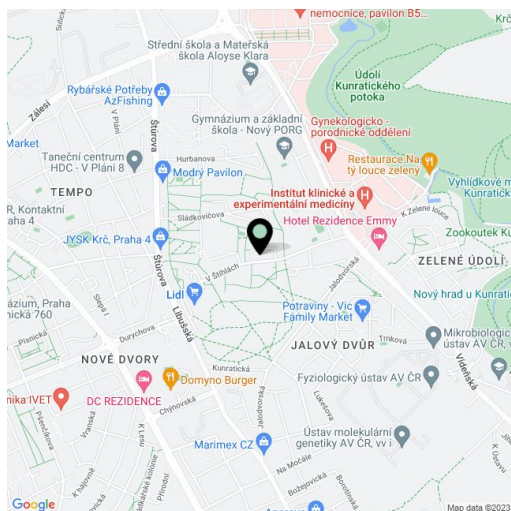
88 m², Prague 4, Krč, V Štíhlách

Total area	117 m²
Floor area*	88 m²
Terrace	29 m²
Parking	Garage parking
Garage	Yes
Cellar	Yes
Service price	Service charges, water, and heating approx. CZK 6,000 per month. Electricity is billed separately.
PENB	C
Reference number	29868
Available from	Immediately

This partially furnished 2-bedroom apartment with 2 terraces offers wonderful green far-reaching views. Situated on the 11th floor of a modern 12th floor residential building with garage parking in Krč, Prague 4, in a green and quiet area in the immediate vicinity of Jalový Dvůr Park, near the Kunratický Forest. An area with full amenities nearby and good access to the city center (bus connections to the Kačerov metro station). Convenient to the PBS and EISP international schools, Montessori preschool, and Nový PORG school.

The interior features a 34 m² living room with a dining area, a fully fitted open plan kitchen and **terrace** with an awning, 2 separate bedrooms with a shared **terrace**, bathroom (bathtub, walk-in shower, sink), a separate toilet, storage/utility room, and an entrance hall with built-in wardrobes.

Laminate floors, tiles, security entry door, new windows, blinds, washer, dryer, dishwasher, induction cooktop, microwave oven, TV, **cellar**, camera system. One **garage parking** space included.



* Area of the unit according to the Civil Code. The area consists of the sum total area of the entire unit bounded by perimeter walls.