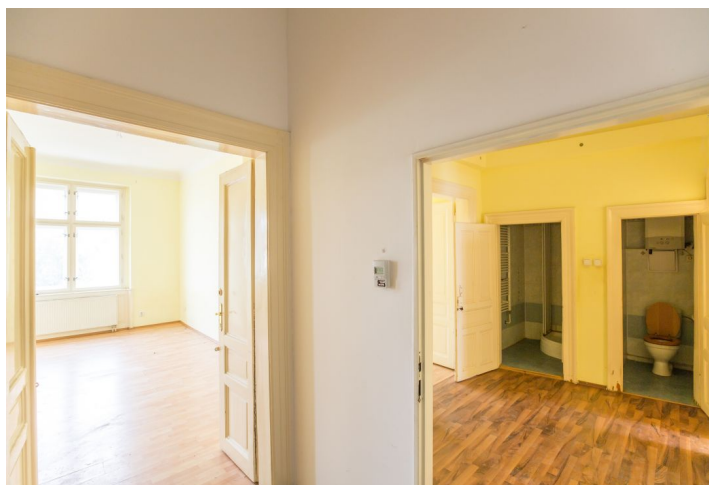
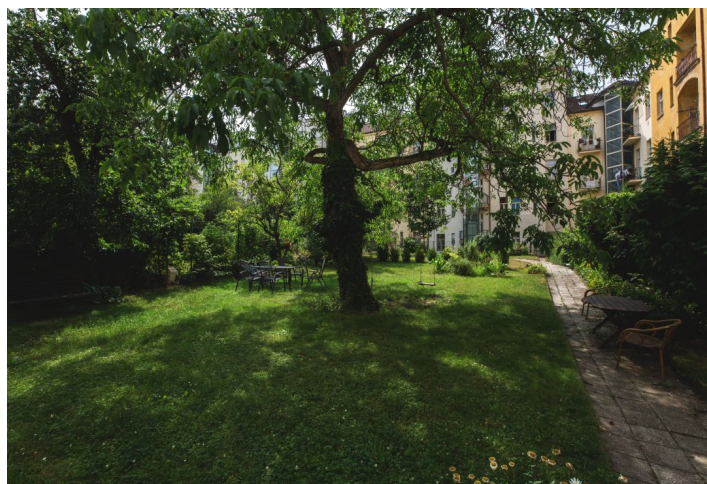




## Apartment Three-bedroom (4+1)

**Sold**

134 m<sup>2</sup>, Prague 2, Vinohrady, Chodská





## Apartment Three-bedroom (4+1)

**Sold**134 m<sup>2</sup>, Prague 2, Vinohrady, Chodská

Total area	134 m <sup>2</sup>
Parking	-
Cellar	-
Service price	2 166 CZK monthly
PENB	G
Reference number	29720

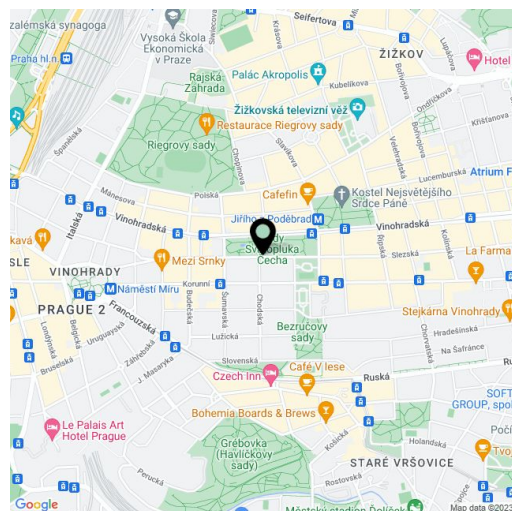
Spacious apartment before reconstruction located on the 3rd floor of a corner apartment house with landscaped garden and a new lift. The building is right next to a park in the popular Vinohrady quarter, just a minutes' walk from a tram stop and a three-minute walk from a metro station.

The layout consists of a hall, a separate kitchen, a room with windows to the garden, 3 more rooms overlooking the park, 2 bathrooms, separate toilet and storage room. The space of the apartment is ideal for creating a 3-bedroom layout with 2 bathrooms.

This apartment with high ceilings has **original doors with brass handles**, **casement windows** and Junkers Gas Boiler heating. The attractive common areas in the building from 1905 feature restored original elements. The building is guarded by a camera system and has a lift leading to the mezzanine. Residents can also enjoy a common landscaped garden with a seating area. Parking available in front of the building in a resident zone.

A place with great transport accessibility and all civic amenities. Within walking distance you can reach **Jiřího z Poděbrad and Náměstí Míru metro stations** or Šumavská and Vinohradská tržnice **tram stops**. There is also a kindergarten, primary, secondary and grammar school, 2 theaters, several shops, restaurants and cafes, pharmacies, a library, post office, and a renowned farmer's market. A lot of greenery is provided by the nearby Bezručovy, Svatopluka Čecha, Bratří Čapků, and Riegrovy parks.

Interior 134 m<sup>2</sup>.



\* Area of the unit according to the Civil Code. The area consists of the sum total area of the entire unit bounded by perimeter walls.





## Apartment Three-bedroom (4+1)

134 m<sup>2</sup>, Prague 2, Vinohrady, Chodská

**Sold**

