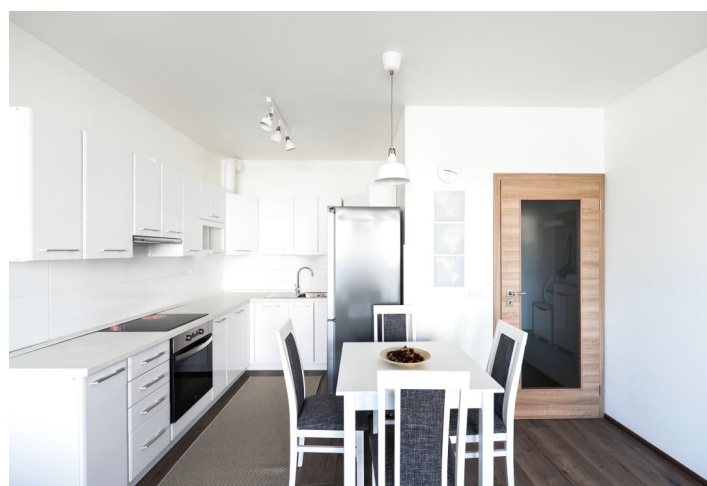
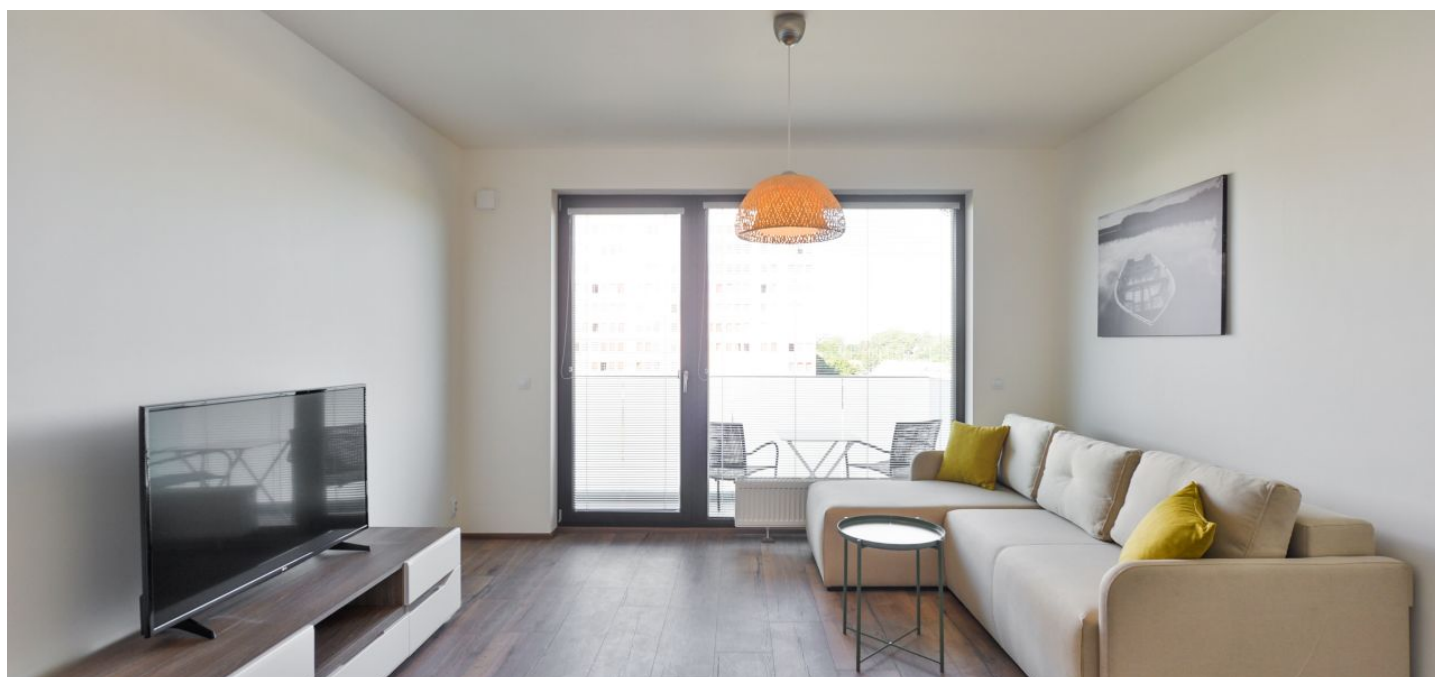




Apartment One-bedroom (2+kk)

Rented

51 m², Prague 8, Karlín, Nekvasilova





Apartment One-bedroom (2+kk)

Rented

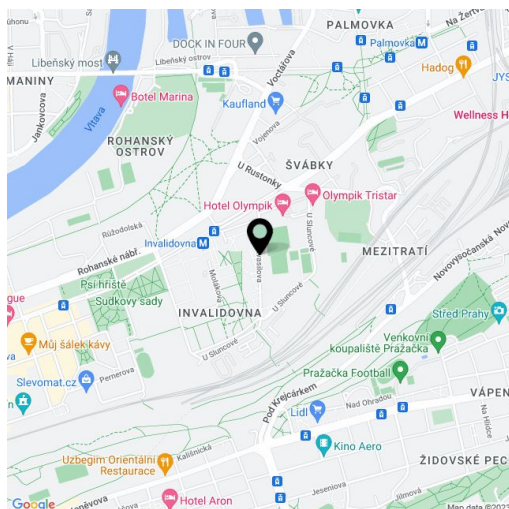
51 m², Prague 8, Karlín, Nekvasilova

Total area	55 m²
Floor area*	51 m²
Balcony	4 m²
Parking	Garage parking.
Garage	Yes
Cellar	Yes
PENB	B
Reference number	29662
Available from	Immediately

Brand new contemporary furnished 1-bedroom flat with a balcony and green views, situated on the fourth floor with lift in the newly built Karlín Park residential project, with underground parking. Located in a quiet part of Prague 8 with quick connections to the city center, a few blocks from Invalidovna metro station, near several parks and children's playgrounds, in the immediate vicinity of the local golf club and tennis courts.

The interior features one bedroom, living room with dining area, a fully fitted open kitchen and **balcony** access, bathroom (bathtub, sink, toilet), laundry room, and entrance hall.

Laminated floors, tiles, security entry door, central heating, blinds, sofabed, washer, dryer, dishwasher, induction cooktop, TV, video entry phone, cable TV connection (O2 and UPC), garden furniture, **cellar**. One **garage parking** space available at CZK 2000 per month. Service charges, water and heating approx. CZK 3500 per month. Electricity will be transferred to the tenant.



* Area of the unit according to the Civil Code. The area consists of the sum total area of the entire unit bounded by perimeter walls.