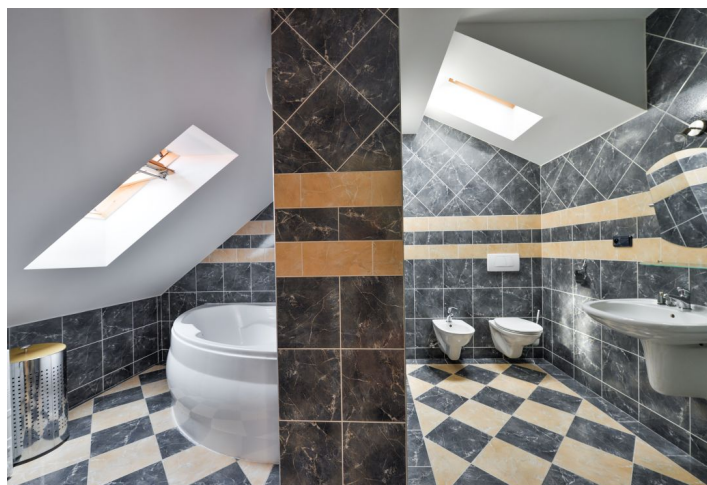
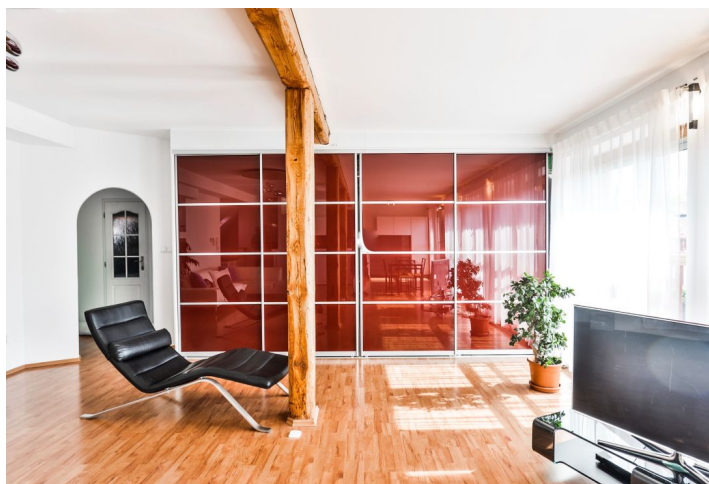




Apartment Three-bedroom (4+kk)

Rented

160 m², Prague 6, Bubeneč, Jilemnického





Apartment Three-bedroom (4+kk)

Rented

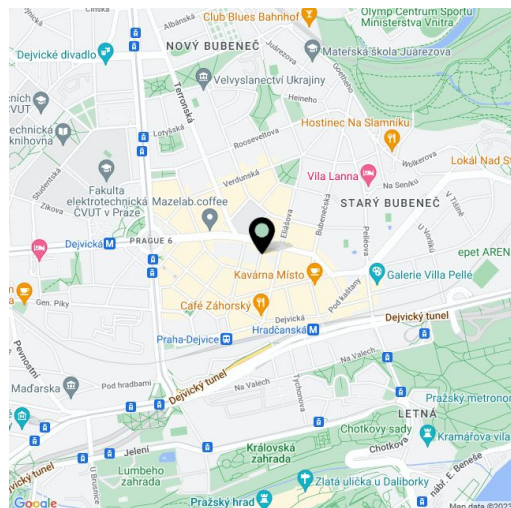
160 m², Prague 6, Bubeneč, Jilemnického

Total area	180 m²
Floor area*	160 m²
Terrace	20 m²
Parking	Garage parking 150 m from the building.
Garage	Yes
Cellar	Yes
PENB	G
Reference number	29528
Available from	Immediately

Boasting 2 terraces (total of 20 m²) facing the quiet green courtyard, this renovated unfurnished 3-bedroom split-level attic flat is on the fifth floor of a traditional residential building with a lift. Located in a quiet street in the popular embassy area of Bubeneč with full amenities, moments from Dejvická metro station, bus and tram links. Within easy reach of Stromovka and Letenské Sady Parks and the Prague Castle, convenient to the airport and the international schools ISP, Park Lane and Riverside School.

The lower level includes one bedroom / office, and entrance hall. The upper floor features a large living room with a fully fitted open kitchen and **terrace** access, master bedroom with a walk-in closet, and one bedroom with access to the second **terrace**. There is a bathroom with **massage shower**, bathtub and toilet, and a guest toilet.

Built-in wardrobes and storage, laminated and wooden floors, tiles, security entry door, electric fireplace, automatic external blinds, dishwasher, induction cooktop, microwave oven, small **cellar**. **Garage parking** can be arranged 150 m from the building at CZK 2700/month + VAT. Deposit for service charges and water CZK 2000/month. Gas and electricity approx. CZK 4000/month. Available from July 1, 2018. **Unfurnished** despite the photos.



* Area of the unit according to the Civil Code. The area consists of the sum total area of the entire unit bounded by perimeter walls.