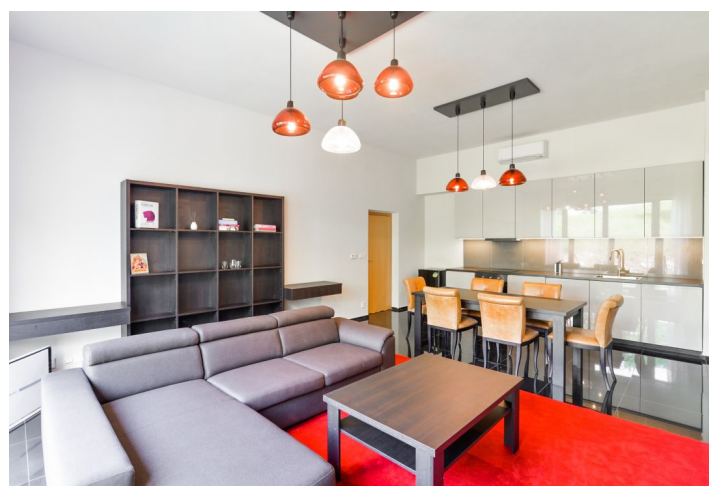
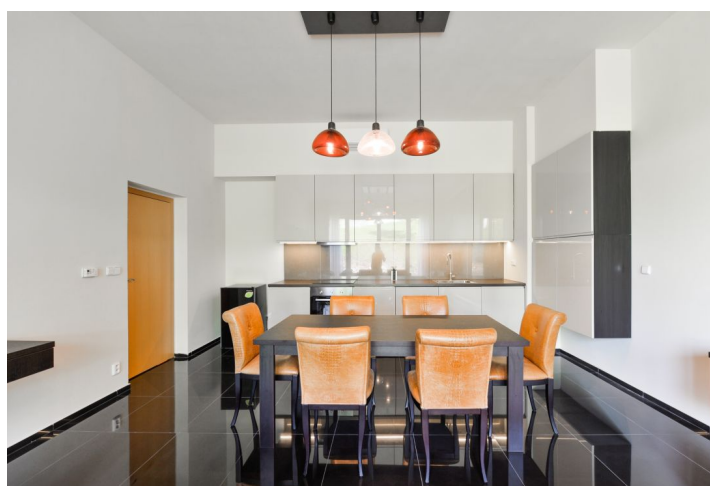
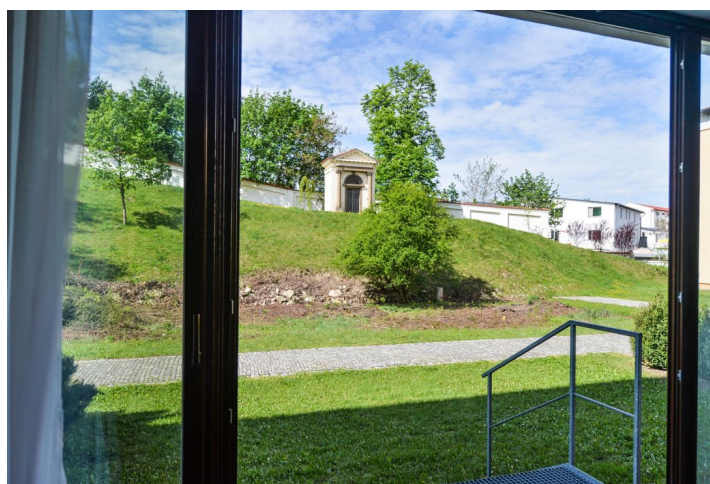




## Apartment One-bedroom (2+kk)

Rented

84 m², Prague 6, Bubeneč, Mlýnská





## Apartment One-bedroom (2+kk)

**Rented**

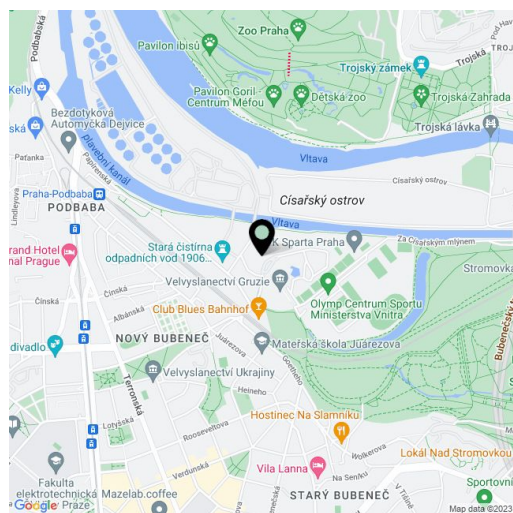
84 m², Prague 6, Bubeneč, Mlýnská

Total area	84 m²
Parking	Garage parking.
Garage	Yes
Cellar	-
PENB	G
Reference number	29127
Available from	Immediately

Fully furnished in HASTENS style, this 1-bedroom flat with beautiful green views is situated on the first floor of a modernized residence with a lift, security, landscaped garden and underground parking. The fully reconstructed Renaissance building includes a cloister used as a lounge and meeting room. Located in a quiet romantic area in the prestigious Bubeneč neighborhood, right next to the lovely Stromovka Park, a few minutes from the Vltava riverbank, with great sports and relaxation opportunities, and with quick connection to the city center - two bus stops from Hradčanská metro with full amenities in the area.

The interior features a living room with a fully fitted open kitchen, one bedroom, bathroom with bathtub incl. a shower screen and toilet, a guest toilet, **walk-in closet**, and a spacious entrance hall with built-in wardrobes.

Quality materials and furnishings, **green views**, high ceilings, tile floors throughout, security entry door, French windows, dishwasher, video entry phone, TV, camera system and night manned security in the building. One on-site underground **garage parking** space available at CZK 2000/ month + VAT. Service charges included in the rent. Utilities are billed separately. **Short term** rental available at a higher rent (min. of three months).



\* Area of the unit according to the Civil Code. The area consists of the sum total area of the entire unit bounded by perimeter walls.