



Apartment Two-bedroom (3+kk)

Rented

120 m², Prague 6, Břevnov, Tomanova





Apartment Two-bedroom (3+kk)

Rented

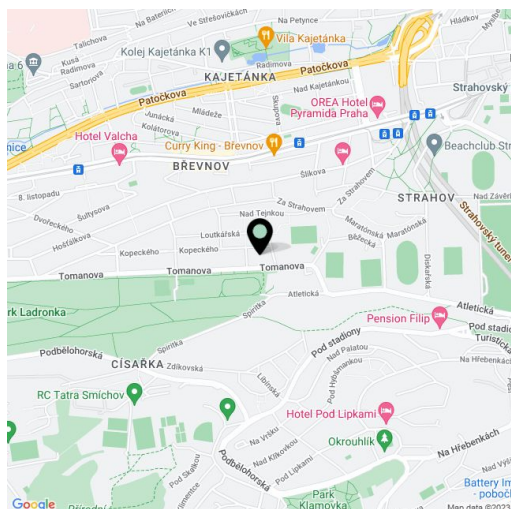
120 m², Prague 6, Břevnov, Tomanova

Total area	133 m ²
Floor area*	120 m ²
Terrace	13 m ²
Parking	Two garage parking spaces.
Garage	Yes
Cellar	Yes
PENB	B
Reference number	29089
Available from	Immediately

Boasting a wonderful green location and a 13 m² terrace, this brand new partly furnished 1-bedroom flat is situated on the first floor in the newly built gated residential project La Crone with a 24/7 reception, security and underground parking, in a prestigious residential area in Prague 6. Attractive quiet location in close vicinity of the Strahov Stadium, the Prague Castle and the popular Ladronka Park with lots of sports and relaxation opportunities, with quick connection to the city center (tram, bus - about ten min. to Hradčanská and Anděl metro stations). Convenient to the airport and international schools in Prague 6, bus stop right next to the residence.

The interior includes a living room with dining area, a fully fitted open kitchen and **terrace** access, master bedroom with built-in wardrobes and an en-suite bathroom (walk-in shower, bidet, toilet), second bedroom, family bathroom (bathtub, toilet), utility room, and a large entrance hall with ample built-in wardrobes and storage.

Green views, **hardwood floors**, tiles, security entry door, French windows, automatic external blinds, master switch, washer / dryer, dishwasher, induction cooktop, microwave oven, video entry phone, **cellar**, private fitness room for residents, pram / bike storage, guest parking. Two on-site **garage parking** spaces included. Service charges, water and heating CZK 5960 per month. Electricity is billed separately.



* Area of the unit according to the Civil Code. The area consists of the sum total area of the entire unit bounded by perimeter walls.



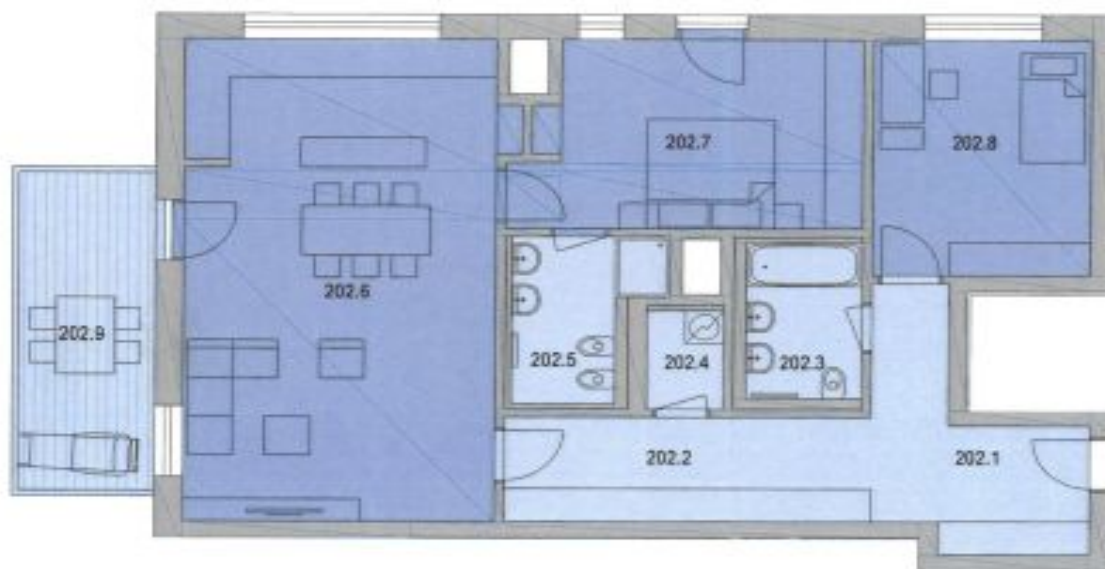
Apartment Two-bedroom (3+kk)

Rented

120 m², Prague 6, Břevnov, Tomanova



RESIDENCE LA CRONE



BYT 3+KK, 1.NP.

202.1	VEŠTĚNÍ	70.0 m ²		
202.2	SÁLKA	30.0 m ²		
202.3	KUCHYŇKA	5.1 m ²		
202.4	PRÁDELNA	2.0 m ²		
202.5	KOUPELNA	5.0 m ²		
202.6	DRYKING FORSU VYKŮVKA	40.0 m ²		
202.7	LOŽNICE	15.0 m ²		
202.8	KOJNICE	14.4 m ²		
LOŽNÍ PLOCHA			112.4 m ²	
OSTĚRNÍ LETĚNÍ - SKUPIN			4.4 m ²	
PRÁDELNÍ PLOCHA			116.1 m ²	
202.9			BALCONI/LOŽNÍ PLOCHA	12.3 m ²
202.9			DRYKING PŘEDMĚNK PLOCHA	15.1 m ²
TK.202			PLOCHA CELKEM	112.0 m ²

UMÍSTĚNÍ V RÁMCI ÚZEMÍ



UMÍSTĚNÍ V RÁMCI BUDOVY



UMÍSTĚNÍ V RÁMCI PODLAŽÍ



Upozornění: obrázek půdorysu předstává je dispozici řešící bytu. Zobrazený nábytek a kuchyňská linka nejsou součástí obchodu. Umístění zařízení bytu je uváděno pouze orientačně, přesná specifikace rozvodů a jejich možného napájení je určena v prováděcí dokumentaci. Plachty jednotlivých místností v zobrazeném schématu se mohou lišit.