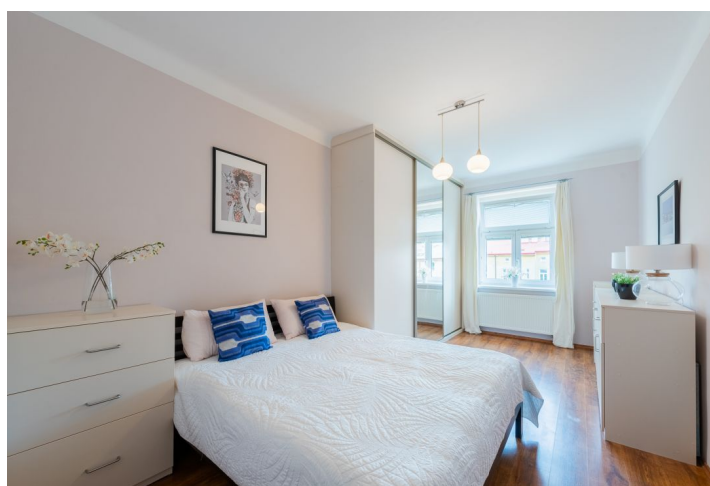




## Apartment One-bedroom (2+kk)

**Sold**

63 m², Prague 2, Vinohrady, Moravská





## Apartment One-bedroom (2+kk)

**Sold**

63 m², Prague 2, Vinohrady, Moravská

Total area	63 m²
Parking	-
Cellar	Yes
Service price	2 423 CZK monthly
PENB	G
Reference number	29042

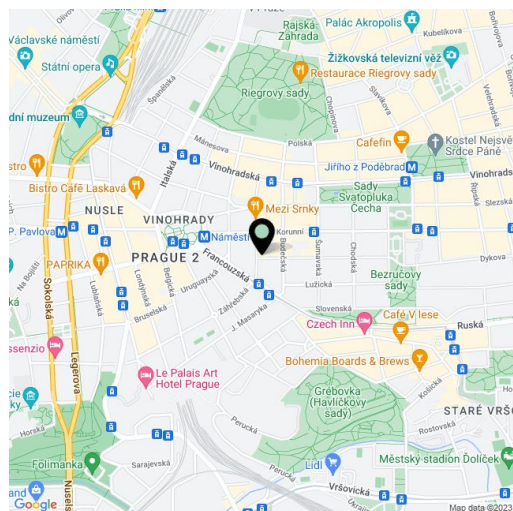
Bright and airy south-facing apartment overlooking a quiet landscaped courtyard, housed in a Vinohrady apartment building from the 1930s on a calm, tree-lined street. All services, public transport, and large parks such as Grébovka park and Rieger's Orchards are within walking distance.

The layout of the apartment on the 4th floor (accessible by elevator) consists of a living room with dining area, 1 bedroom, kitchen, bathroom (with bathtub), entrance hall and separate toilet.

The apartment has been renovated (replaced risers, electric wiring, gas boiler). There are new plastic windows with interior blinds and laminate flooring. **Storage space** provided by built-in cabinets in the hall and the bedroom and cabinets in the suspended ceiling under a high ceiling. The price includes a **cellar**, residents have the possibility to use a room for prams and a **common garden with mature trees** in the courtyard.

The popular location provides **everything needed for comfortable urban living**. The Šumavská tram stop is located just a few steps from the house, while the Náměstí Míru metro station (Line A) is within walking distance. The surrounding area is full of shops, restaurants, cafes and playgrounds. There is also a post office, a library and a sports hall. The apartment is close to the popular Slovenská kindergarten and elementary school, reachable on foot without crossing any busy streets.

Interior 62,8 m², cellar approx. 4 m².



\* Area of the unit according to the Civil Code. The area consists of the sum total area of the entire unit bounded by perimeter walls.