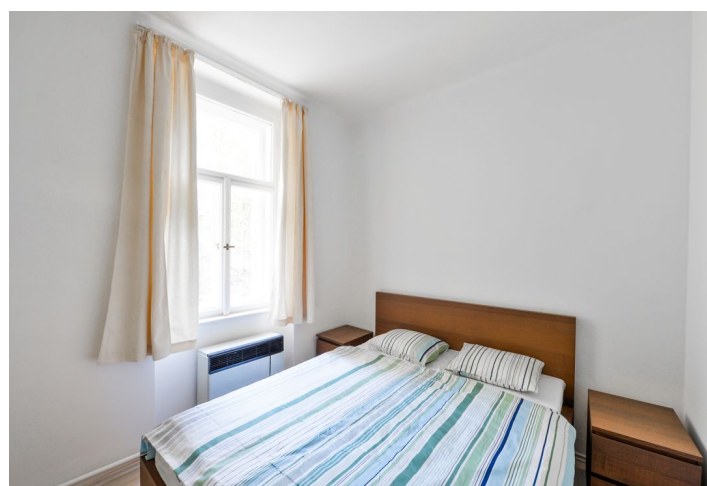




## Apartment Two-bedroom (3+kk)

Rented

63 m<sup>2</sup>, Prague 5, Smíchov, Mrázovka





## Apartment Two-bedroom (3+kk)

**Rented**

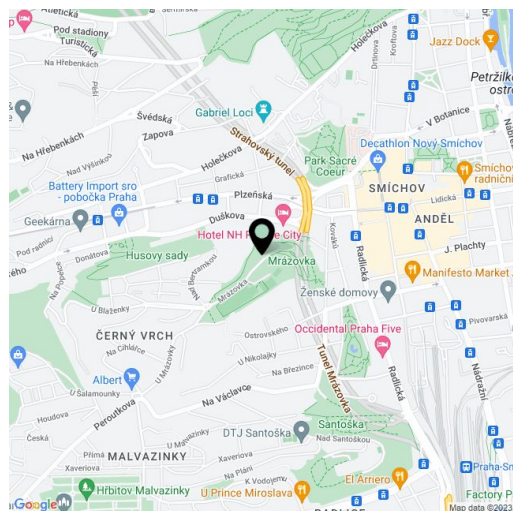
63 m², Prague 5, Smíchov, Mrázovka

|                  |             |
|------------------|-------------|
| Total area       | 63 m²       |
| Parking          | -           |
| Cellar           | Yes         |
| PENB             | G           |
| Reference number | 29022       |
| Available from   | Immediately |

Renovated furnished 2-bedroom flat on the third floor of a well kept reconstructed traditional building with a common courtyard garden and no lift. Located beneath the Mrázovka and Bertramka Parks, a short walk from many conveniences incl. a huge shopping center with sports and cultural facilities - Nový Smíchov, plus great public transportation connections - Anděl metro and trams. Very quick access to the city center, full amenities in close vicinity.

The flat has a fully fitted kitchen in the entrance hall, living room with dining area, a large and a small bedroom both with **views of a green slope**, bathroom with bathtub and toilet, and a fitted walk-in closet.

**Preserved original details**, high ceilings, laminated floors, tiles, WAW gas heating, washer, dishwasher, basic kitchenware, **cellar**, chip entry to the building. Deposit for service charges and utilities CZK 3800 per month.



\* Area of the unit according to the Civil Code. The area consists of the sum total area of the entire unit bounded by perimeter walls.