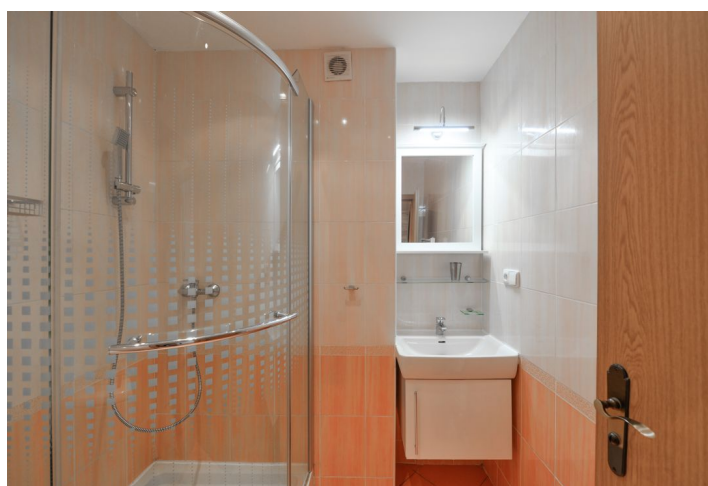
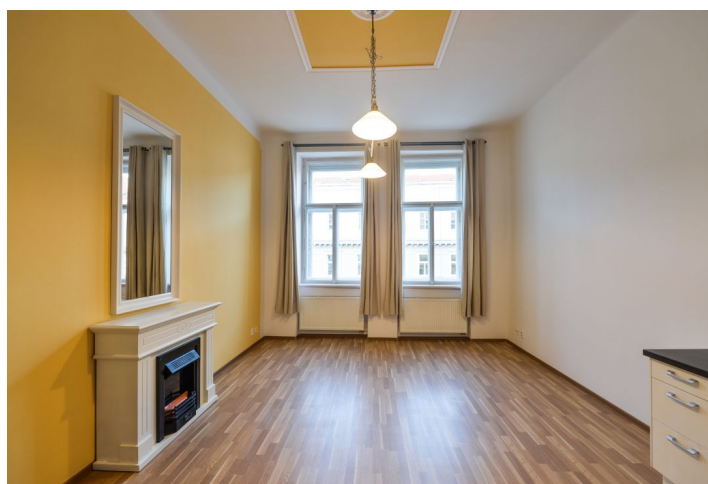




Apartment One-bedroom (2+kk)

Rented

57 m², Prague 5, Smíchov, V Lesíčku





Apartment One-bedroom (2+kk)

Rented

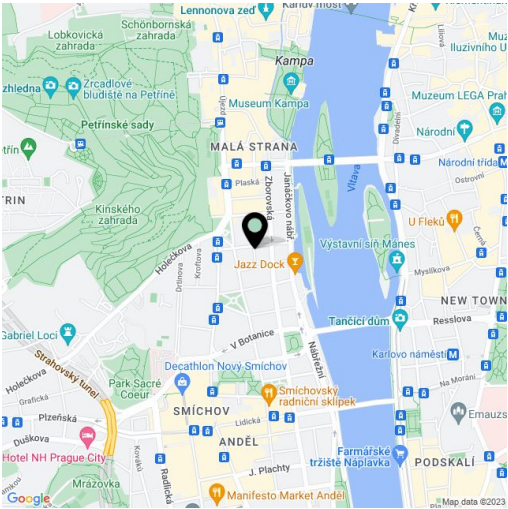
57 m², Prague 5, Smíchov, V Lesíčku

Total area	57 m²
Parking	-
Cellar	Yes
PENB	G
Reference number	28938
Available from	Immediately

This is a newly partly renovated 1-bedroom flat on the third floor of a reconstructed traditional building with preserved architectural details, beautiful entrance, shared courtyard garden and a lift. Located in a quiet street near the Vltava embankment, Petřín Park and Kinských Garden, with quick connections to the city center (trams), and within easy reach of Anděl metro station and Nový Smíchov commercial and entertainment center.

The interior features a living room with an electric **fireplace** and a fully fitted open kitchen, one bedroom facing the green courtyard and with large built-in storage space, shower bathroom, a separate toilet with utility area, and entrance hall.

Preserved original details, high ceilings, large windows, laminated floors, tiles, security entry door, built-in storage, electric heating, washer, dishwasher, microwave oven, **cellar**, shared balcony in the mezzanine of the building. Deposit for service charges and water CZK 800/person/month. Electricity will be transferred to the tenant.



* Area of the unit according to the Civil Code. The area consists of the sum total area of the entire unit bounded by perimeter walls.