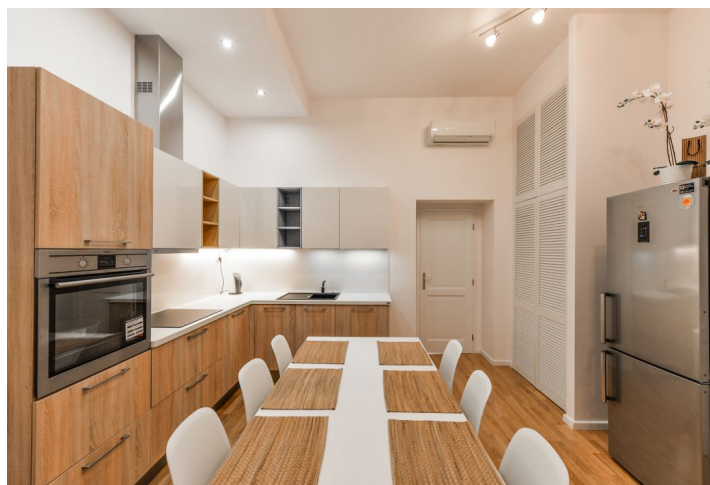




## Apartment Two-bedroom (3+1)

92 m², Prague 2, Vinohrady

**Sold**





## Apartment Two-bedroom (3+1)

**Sold**

92 m², Prague 2, Vinohrady

Total area	92 m²
Parking	-
Cellar	-
Service price	5 832 CZK monthly
PENB	E
Reference number	28884

\* Area of the unit according to the Civil Code. The area consists of the sum total area of the entire unit bounded by perimeter walls.

This completely refurbished, well-equipped apartment with air conditioning and beautiful views of landscaped greenery is set in a Vinohrady apartment building with an elevator. Located in a desired location near several parks, just an 8-minute walk from the Náměstí Míru metro station.

The interior of the apartment on the 2nd floor consists of 3 large rooms, a separate kitchen with a dining room, a hall with large storage space under the ceiling, and a bright bathroom with a corner bathtub and toilet.

The equipment includes a **new Häcker German kitchen unit** with built-in appliances (AEG dishwasher and electric oven, induction hob, and Bosch chimney cooker hood), a Samsung refrigerator, and a large pantry, an LG washing machine, and a Toshiba air-conditioning unit with low operating costs. Swedish Kährs **oak flooring** and tiles. **Wood casement windows**, plastic windows in the bathroom. Security entrance door, Protherm gas boiler heating.

The apartment is located on the border of Prague 2 and Prague 10, near **Grébovka** Park and just a few steps from a tram stop. The **Náměstí Míru** metro station (line A) is just a couple of minutes on foot or by tram. All amenities are available in the vicinity: kindergartens and primary schools, playgrounds, sports facilities, shops, restaurants, cafes, hair salons, theatres, banks, doctor's offices, and much more.

Interior 92.2 m².

In addition to regular property viewings, we also offer real time video viewings via WhatsApp, FaceTime, Messenger, Skype, and other apps.