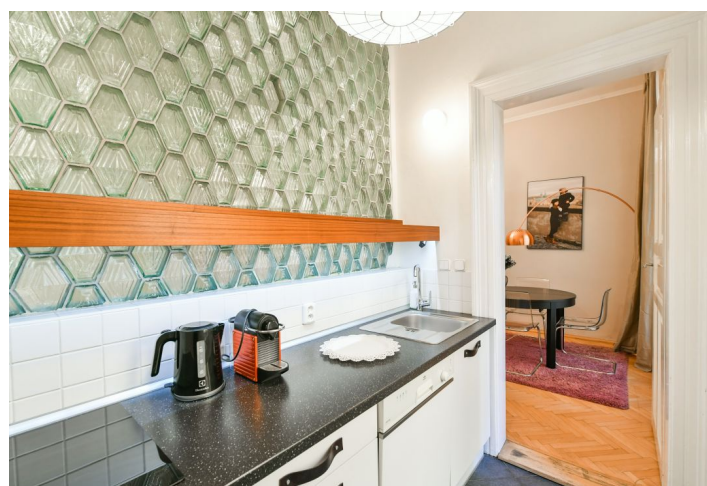




## Apartment Two-bedroom (3+1)

90 m², Prague 1, Staré Město

**Rented**





## Apartment Two-bedroom (3+1)

**Rented**

90 m², Prague 1, Staré Město

Total area	90 m²
Parking	-
Cellar	-
Service price	Common building charges, water, heating, and weekly cleaning: CZK 8,500. Electricity is billed separately.
PENB	G
Reference number	28748
Available from	Immediately

\* Area of the unit according to the Civil Code. The area consists of the sum total area of the entire unit bounded by perimeter walls.

This fully furnished renovated apartment for rent is on the upper ground floor of a completely refurbished historic building with an elevator, an impressive entrance hall, and a shared courtyard. Located in the historic center of Prague mere steps from the Rotunda of the Holly Cross, moments from the National Theatre and Charles Bridge. Within easy reach of multiple tram links and the Národní třída metro station, with full amenities in the area.

The interior features a walk-through living room with a dining area, a small fully fitted kitchen with a pantry/utility room, two comfortable bedrooms, a bathroom with a bathtub, a separate toilet, and an entrance hall.

**Preserved original details**, high ceilings, **hardwood parquet floors**, large windows, washer, dishwasher, induction cooktop, TV, WiFi, alarm, chip entry to the building.