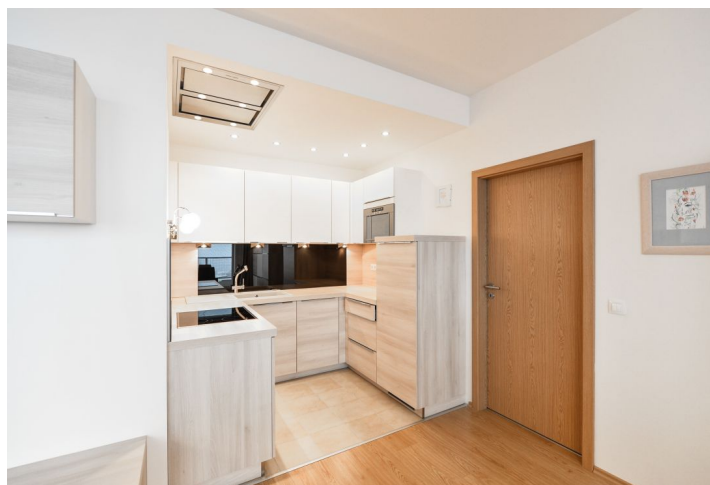




## Apartment Two-bedroom (3+kk)

Rented

90 m², Prague 6, Vokovice, K Červenému vrchu





## Apartment Two-bedroom (3+kk)

**Rented**

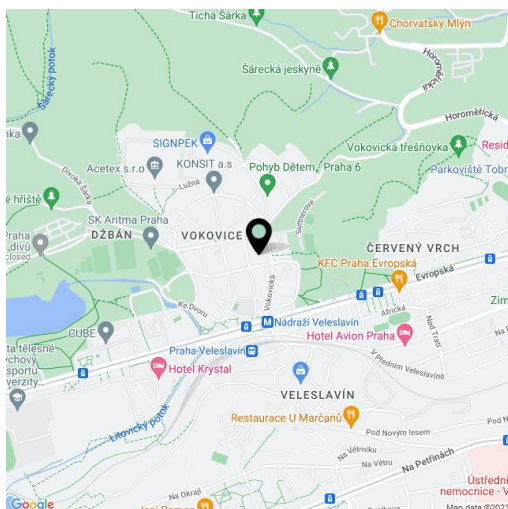
90 m², Prague 6, Vokovice, K Červenému vrchu

Total area	102 m²
Floor area*	90 m²
Balcony	12 m²
Parking	Garage parking.
Garage	Yes
Cellar	Yes
PENB	C
Reference number	28583
Available from	Immediately

Boasting a 12 m² balcony and beautiful far reaching green views, this is a partly furnished 2-bedroom flat on the fifth floor of a modern gated residential complex with a reception, 24-hour security and garage parking. Located in a quiet green residential neighborhood in the immediate vicinity of the Divoká Šárka natural preserve. Quick access to the city center (two min. by walk to trams and Nádraží Veleslavín metro) and the airport, convenient to international schools, with full amenities within easy reach.

The flat features a bright living room with a fully fitted open kitchen and dining area, two bedrooms, bathroom with bath, sink and toilet, **walk-in closet**, utility room, a guest toilet, and entrance hall. The **balcony** is accessible from the living room and one bedroom.

Laminated floors, tiles, security entry door, built-in wardrobes, French windows, central heating, induction cooktop, microwave oven, **cellar**, camera system, lift, chip entry to the building, children's playground nearby. One **garage parking space** included. Common building charges, water and heating around CZK 6000 per month. Electricity is billed separately.



\* Area of the unit according to the Civil Code. The area consists of the sum total area of the entire unit bounded by perimeter walls.