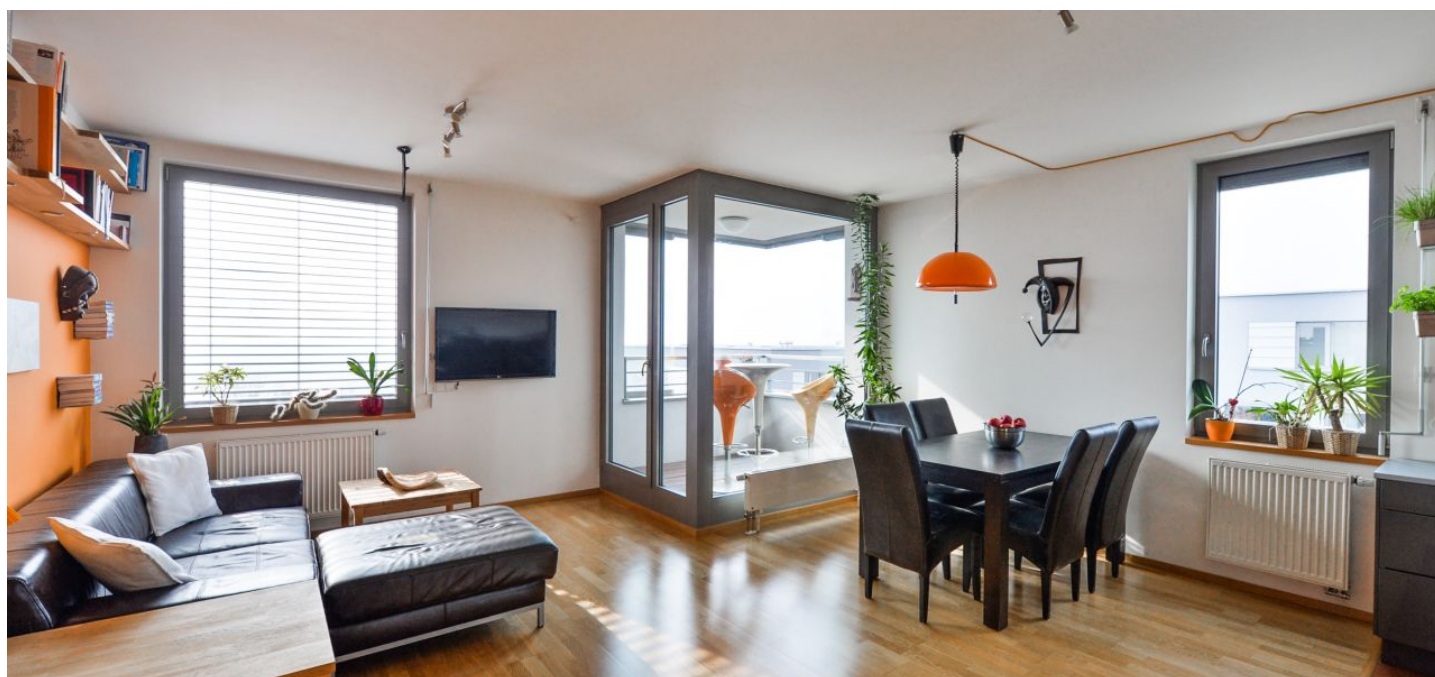




## Apartment Two-bedroom (3+kk)

Rented

81 m², Prague 9, Prosek, Valečovská





## Apartment Two-bedroom (3+kk)

**Rented**

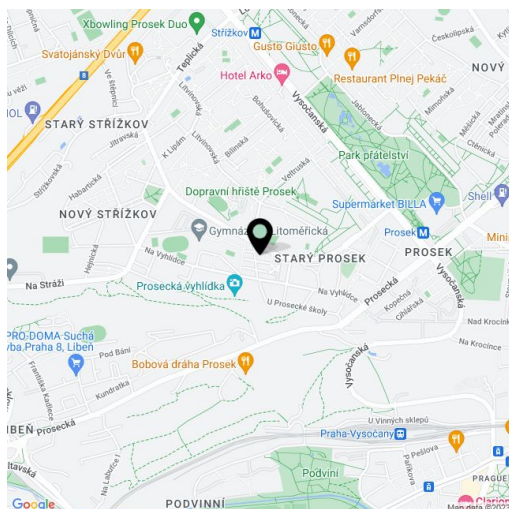
81 m², Prague 9, Prosek, Valečovská

Total area	84 m²
Floor area*	81 m²
Loggia	3 m²
Parking	Garage parking.
Garage	Yes
Cellar	Yes
PENB	G
Reference number	28414
Available from	Immediately

Benefiting from an enclosed balcony and beautiful far reaching views of Prague incl. the Prague Castle, this is a partly furnished 2-bedroom flat on the third top floor of a modern residential project with parking and a children's playground. Located in quiet residential area of Prosek, Prague 9, near a park and a tennis court, with full amenities in close vicinity and just a few minute walk from Prosek metro station.

The interior includes living room with a fully fitted open kitchen and access to the enclosed balcony, two bedrooms, bathroom with bath and a shower screen, a separate toilet, and entry hall with lots of wardrobes.

Wooden floors and tiles, security entry door, French windows, ample storage, outdoor blinds, dishwasher, fridge, microwave oven, TV, cellar, chip entry to the building. One garage parking space included. Deposit for common building charges, water and heating around CZK 4000/month. Electricity is billed separately. Available from May 2018.



\* Area of the unit according to the Civil Code. The area consists of the sum total area of the entire unit bounded by perimeter walls.