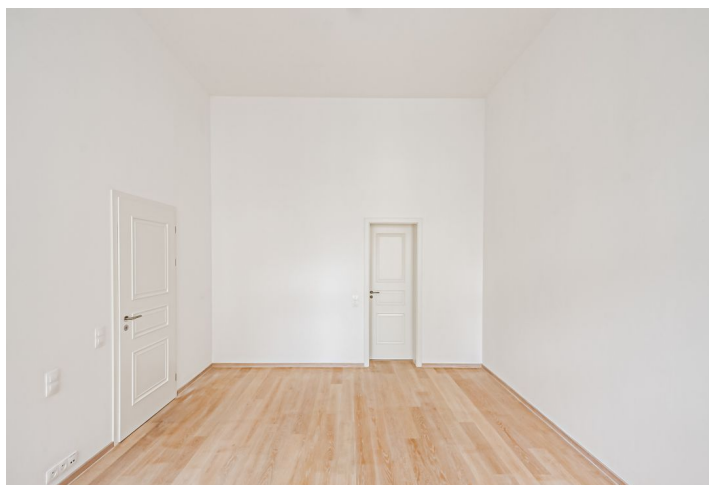
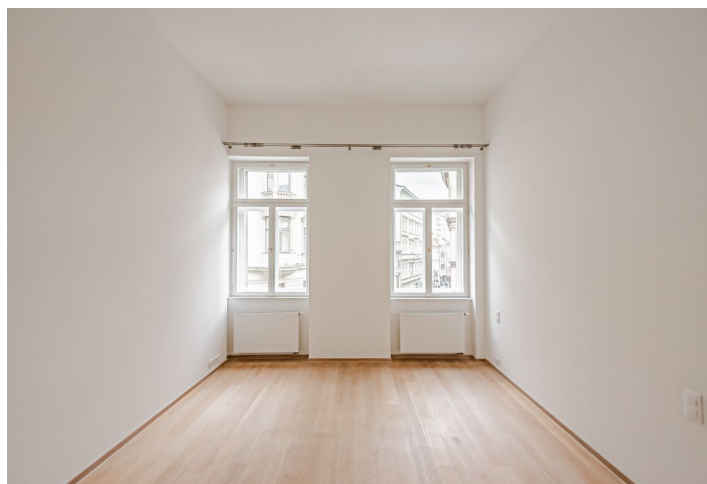




Apartment Two-bedroom (3+kk)

Rented

102 m², Prague 1, Nové Město, Jungmannova



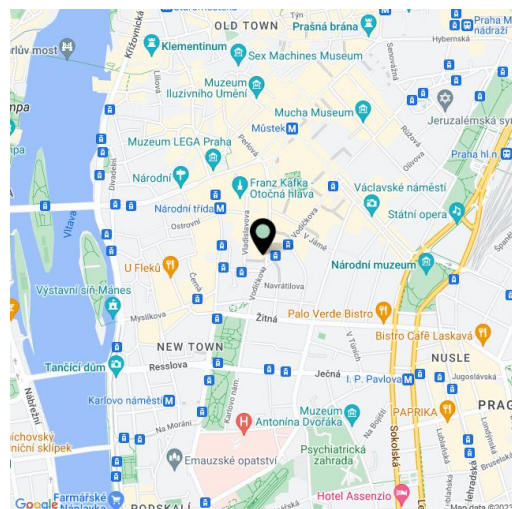


Apartment Two-bedroom (3+kk)

Rented102 m², Prague 1, Nové Město, Jungmannova

Total area	124 m ²
Floor area*	102 m ²
Terrace	22 m ²
Parking	-
Cellar	-
Service price	Deposit for common building charges and water CZK 6,800/month. Electricity - transfer to the tenant.
PENB	G
Reference number	27614
Available from	Immediately

Benefiting from a prime central location and a 22 sq. m. courtyard terrace, this 2-bedroom 2-bathroom unfurnished apartment is situated on the second floor of a historic building that was completely rebuilt and modernized incl. a meticulously preserved original 1920s Art Deco facade and an internal passage connecting Jungmannova Street with Purkyňova and Vladislavova streets. The front facade in the style of German Expressionism was designed by architects Viktor Lampl and Otto Fuchs. This unique multifunctional building is located in the financial and commercial center of Prague moments from the new Quadrio shopping mall, with excellent access by public transport, a few minutes from the Národní třída metro station (line B) and tram line hub as well as the Můstek metro (lines A, B). A wide range of amenities and services available in close vicinity, quiet despite the central location.



The interior features a living room with a fully fitted open plan kitchen, a master bedroom with an en-suite bathroom (bathtub, bidet, toilet), a second bedroom, a family bathroom (walk-in shower, toilet), a walk-in closet with a utility area, and an entrance hall with access to the terrace in the courtyard of the building.

High standard materials and finishes, high ceilings, **oak floors**, tiles, heated bathroom floors, thermally insulated double-glazed windows, central gas heating, **granite kitchen worktop**, dishwasher, induction cooktop, microwave oven, **alarm**, video entry phone, chip entry to the building.

* Size of the unit according to the Housing Act.

The area consists of the sum total of the internal area of every room.



Apartment Two-bedroom (3+kk)

Rented

102 m², Prague 1, Nové Město, Jungmannova



TABULKA MÍSTNOSTÍ - 3.NPb			
č.m.	NÁZEV MÍSTNOSTI	m²	m²
3.05	CHODBA	9.27	
3.06a	CHODBA		7.34
3.06b	PROSTORÁČÍ SCHODIŠTĚ		1.33
3.06	SCHODIŠTĚ	25.93	
3.06a	SCHODIŠTĚ		11.33
3.06b	CHODBA		12.26
3.06c	PROSTORÁČÍ SCHODIŠTĚ		2.34
3.07	ATELIER	64.97	
3.07a	CHODBA		6.82
3.07b	WC		2.89
3.07c	SKLAD		4.29
3.07d	ATELIER		30.47
3.07e	ATELIER		12.54
3.07f	KOPELNA		7.96
3.08	ATELIER	72.58	
3.08a	CHODBA		4.85
3.08b	KOPELNA		4.81
3.08c	SKLAD		4.19
3.08d	ATELIER		32.94
3.08e	ATELIER		18.62
3.08f	KOPELNA		7.18
3.09	BYT	104.52	
3.09a	CHODBA		12.25
3.09b	WC		3.81
3.09c	KUCHĚ		8.55
3.09d	OBÝVACÍ PROST.		35.77
3.09e	LŽBNICE		13.61
3.09f	CHODBA		3.60
3.09g	KOPELNA		8.03
3.09h	LŽBNICE		18.10
3.10	BYT	102.41	
3.10a	CHODBA		11.81
3.10b	LŽBNICE		14.89
3.10c	KOPELNA		3.67
3.10d	TECHNICKÁ MÍSTNOST		1.88
3.10e	OBÝVACÍ PROST.		43.06
3.10f	LŽBNICE		22.10
3.10g	KOPELNA		5.90
3.11	SCHODIŠTĚ	27.54	
3.11a	SCHODIŠTĚ		8.65
3.11b	CHODBA		16.06
3.11c	PROSTORÁČÍ SCHODIŠTĚ		2.84
3.12	CHODBA	6.30	
3.12a	CHODBA		4.09
3.12b	PROSTORÁČÍ SCHODIŠTĚ		2.20
CELKOVÝ (bez výlohových sacích a oken)			
V1	VÝTAHOVÁ ŠACHTA	2.63	
V2	VÝTAHOVÁ ŠACHTA	2.93	
A03	ATRIUM 03	24.88	
A04	ATRIUM 04	22.09	
TOTAL FLATS WITH ATRIUMS			391.45
TOTAL FLATS WITHOUT ATRIUMS			344.48