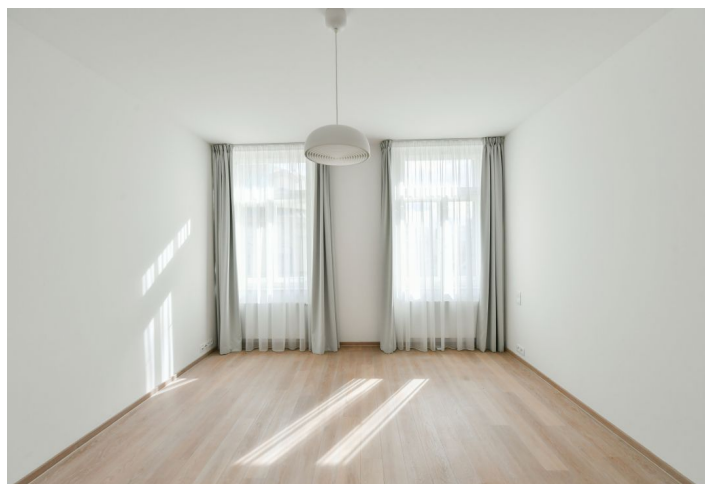
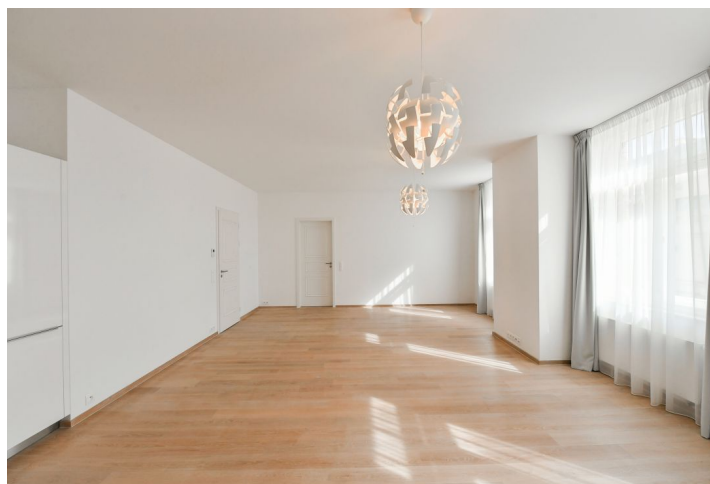




Apartment Two-bedroom (3+kk)

Rented

103 m², Prague 1, Nové Město, Jungmannova





Apartment Two-bedroom (3+kk)

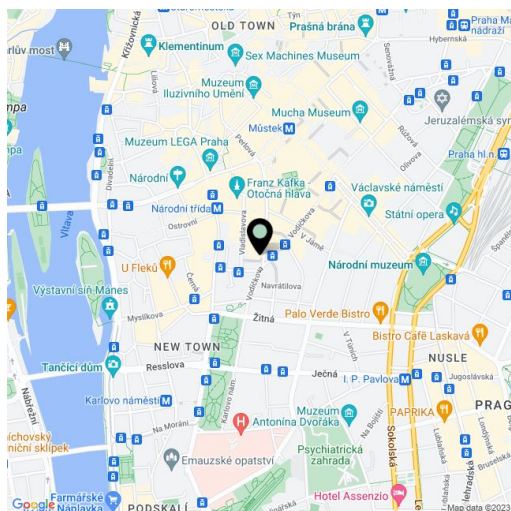
Rented103 m², Prague 1, Nové Město, Jungmannova

Total area	103 m ²
Parking	-
Cellar	-
PENB	G
Reference number	27611
Available from	Immediately

Benefiting from a prime central location, this brand new 2-bedroom 2-bathroom flat is situated on the fifth floor of a historic building which was completely rebuilt and modernized incl. a meticulously preserved original 1920s Art Deco facade and an internal passage connecting Jungmannova street with Purkyňova and Vladislavova streets. The front facade in the style of German Expressionism was designed by architects Viktor Lampl and Otto Fuchs. This unique multifunctional building is located in the financial and commercial center of Prague just moments from the new Quadrio shopping mall, with excellent access by public transport, just minutes from Národní třída metro station (line B) and tram line hub as well as Můstek (lines A, B) metro. Wide range of amenities and services available in close vicinity, quiet despite the central location.

The interior features living room with a fully fitted open kitchen, master bedroom with a full en-suite bathroom, second bedroom, family bathroom (walk-in shower, bidet, toilet), and entrance hall.

High standard materials and finishes, **oak floors**, tiles, heated bathroom floors, thermally insulated double glazed windows, central gas heating, **granite kitchen worktop**, dishwasher, induction cooktop, microwave oven, video entry phone, chip entry to the building. Can be furnished at a higher rent. Common building charges and deposit for utilities are billed separately.



* Area of the unit according to the Civil Code. The area consists of the sum total area of the entire unit bounded by perimeter walls.



Apartment Two-bedroom (3+kk)

Rented

103 m², Prague 1, Nové Město, Jungmannova



TABULKA MÍSTNOSTÍ - 6 NP			
č.m.	NAZEV MÍSTNOSTI	m²	m²
6.01	SCHODIŠTĚ	25.69	
6.01a	SCHODIŠTĚ		7.78
6.01b	O-KOŘBA		17.91
6.02	SCHODIŠTĚ	24.35	
6.02a	SCHODIŠTĚ		9.74
6.02b	O-KOŘBA		14.81
6.03	BT	82.43	
6.03a	O-KOŘBA		5.61
6.03b	KOUPELNA		5.38
6.03c	LŮŽNICE		9.65
6.03d	KUCHYNĚ		7.15
6.03e	OPRAVOV PIVO		10.57
6.03f	LŮŽNICE		12.02
6.03g	KOUPELNA		7.06
6.04	BT	105.03	
6.04a	O-KOŘBA		12.88
6.04b	KOUPELNA		3.97
6.04c	KUCHYNĚ		8.52
6.04d	OPRAVOV PIVO		16.07
6.04e	LŮŽNICE		13.61
6.04f	O-KOŘBA		3.85
6.04g	KOUPELNA		8.03
6.04h	LŮŽNICE		18.20
6.05	BT	76.78	
6.05a	O-KOŘBA		11.47
6.05b	KOŘEBA		3.25
6.05c	KOUPELNA		4.43
6.05d	KUCHYNĚ		6.58
6.05e	OPRAVOV PIVO		10.47
6.05f	LŮŽNICE		12.54
6.05g	KOUPELNA		7.96
6.06	BT	102.64	
6.06a	O-KOŘBA		8.47
6.06b	KOUPELNA		5.23
6.06c	LŮŽNICE		18.83
6.06d	KOUPELNA		7.44
6.06e	LŮŽNICE		19.46
6.06f	OPRAVOV PIVO		43.22
CELKOV (bez výlokových částí)		416.89	
V1	VÝTAHOVÁ ŠACHTA	2.63	
V2	VÝTAHOVÁ ŠACHTA	2.93	
TOTAL FLATS			366.85