



## Apartment Four-bedroom (5+1)

188 m<sup>2</sup>, Prague 1, Nové Město, Jungmannova

Rented



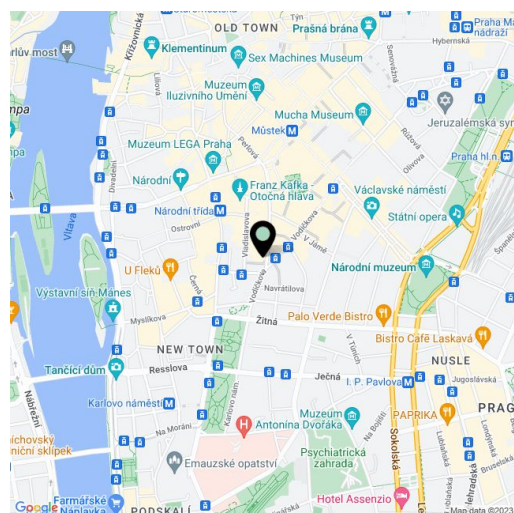


## Apartment Four-bedroom (5+1)

**Rented**188 m<sup>2</sup>, Prague 1, Nové Město, Jungmannova

Total area	201 m <sup>2</sup>
Floor area*	188 m <sup>2</sup>
Terrace	13 m <sup>2</sup>
Parking	-
Cellar	-
Service price	Deposit for common building charges and water CZK 6,500/month. Electricity and gas - transferred to the tenant.
PENB	Not required
Reference number	27607
Available from	Immediately

Benefiting from a prime central location, a 13 m<sup>2</sup> courtyard terrace, and direct access from the elevator, this attic apartment is situated on the 6th topmost floor of a historic building which was completely rebuilt and modernized incl. a meticulously preserved original 1920s Art Deco facade and an interior passage connecting Jungmannova Street with Purkyňova and Vladislavova streets. The front facade in the style of German Expressionism was designed by architects Viktor Lampl and Otto Fuchs. This unique multifunctional building is located in the financial and commercial center of Prague just moments from the new Quadrio shopping mall, with excellent access by public transport, minutes from the Národní třída metro station (line B) and tram line hub as well as Můstek (lines A, B) metro. A wide range of amenities and services available in close vicinity, quiet despite the central location.



The interior features an attractive living room, a dining room (could be a study or guest bedroom), a fully fitted kitchen, three separate bedrooms, a full en-suite bathroom, a second en-suite bathroom with a bathtub, bidet, and toilet, a walk-in closet, a guest toilet, and an entrance hall. The terrace is accessible from the living room, dining room, and one bedroom.

**Air-conditioning**, high standard materials and finishes, **oak floors**, tiles, oversized floor-to-ceiling windows, heated bathroom floors, thermally insulated double glazed windows, independent gas boiler, **granite kitchen worktop**, dishwasher, induction cooktop, microwave oven, alarm, video entry phone, chip entry to the building. Can be furnished at a higher rent.

\* Size of the unit according to the Housing Act.  
The area consists of the sum total of the internal area of every room.

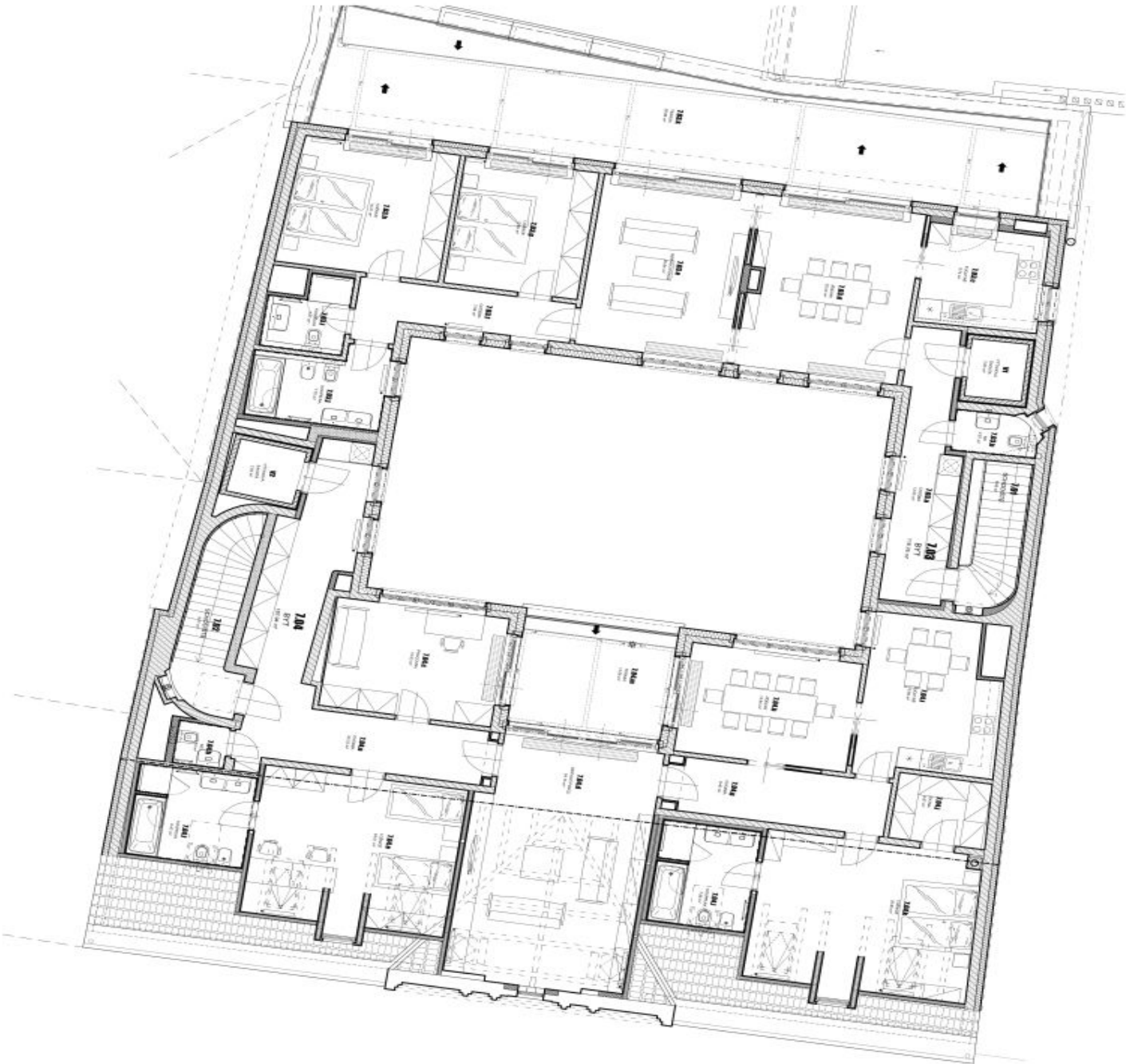




Apartment Four-bedroom (5+1)

Rented

188 m², Prague 1, Nové Město, Jungmannova



TABULKA MÍSTNOSTÍ - 7.NP			
č.m.	NÁZEV MÍSTNOSTI	m²	m²
7.01	SPALOVNĚ	6,98	
7.02	SPALOVNĚ	8,77	
7.03	BRNÍ (bez terasy)	116,76	
7.03a	OKOBNÁ	12,06	
7.03b	WC	2,27	
7.03c	KUCHYNĚ	9,74	
7.03d	JEDLNA	22,03	
7.03e	OBYVACÍ PROSTOR	20,84	
7.03f	OKOBNÁ	7,59	
7.03g	LÓDNICE	13,65	
7.03h	LÓDNICE	16,31	
7.03i	KOUPELNA	4,27	
7.03j	KOUPELNA	7,70	
7.03k	TERASA	56,66	
7.04	BRNÍ (bez terasy)	187,94	
7.04a	OKOBNÁ	25,72	
7.04b	KOUPELNA	1,73	
7.04c	PRACOVNA	15,03	
7.04d	OBYVACÍ PROSTOR	34,15	
7.04e	LÓDNICE	24,01	
7.04f	KOUPELNA	8,47	
7.04g	OKOBNÁ	9,40	
7.04h	JEDLNA	14,94	
7.04i	KUCHYNĚ	15,85	
7.04j	SPALNÁ	4,97	
7.04k	LÓDNICE	25,80	
7.04l	KOUPELNA	7,88	
7.04m	TERASA	13,08	
	CELKOVÝ (s terasami, bez výhledových sčítání)	359,78	
V1	VÝTAHOVÁ ŠACHTA	2,63	
V2	VÝTAHOVÁ ŠACHTA	2,93	
	TOTAL FLATS WITH TERRACES	374,44	
	TOTAL FLATS WITHOUT TERRACES	304,70	