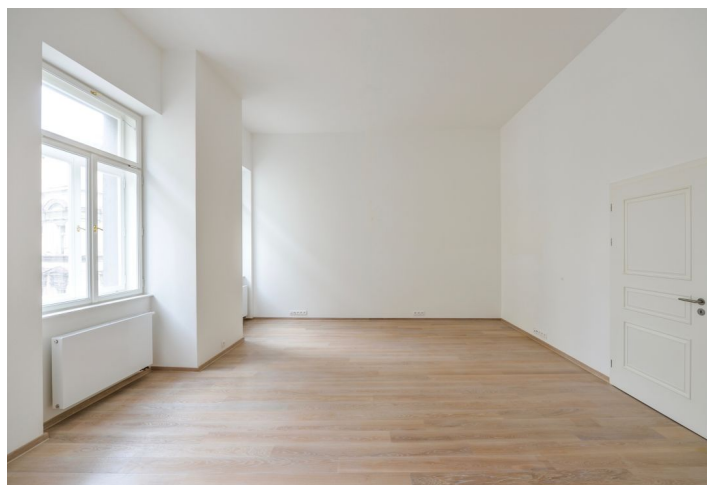
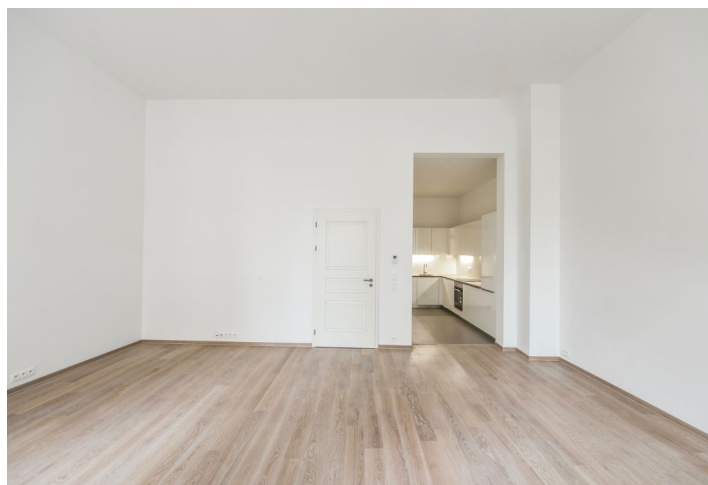




## Apartment Two-bedroom (3+kk)

Rented

104 m<sup>2</sup>, Prague 1, Nové Město, Jungmannova





## Apartment Two-bedroom (3+kk)

**Rented**

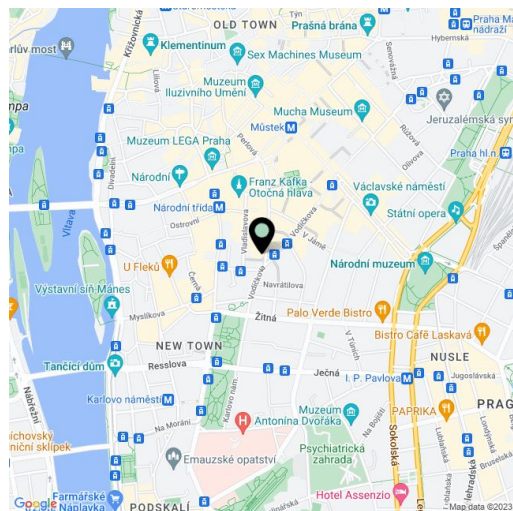
104 m², Prague 1, Nové Město, Jungmannova

Total area	129 m²
Floor area*	104 m²
Terrace	25 m²
Parking	-
Cellar	-
PENB	G
Reference number	27606
Available from	Immediately

Benefiting from a prime central location and a large courtyard terrace, this 2-bedroom 2-bathroom flat is situated on the second floor of a historic building which was completely rebuilt and modernized incl. a meticulously preserved original 1920s Art Deco facade and an internal passage connecting Jungmannova street with Purkyňova and Vladislavova streets. The front facade in the style of German Expressionism was designed by architects Viktor Lampl and Otto Fuchs. This unique multifunctional building is located in the financial and commercial center of Prague just moments from the new Quadrio shopping mall, with excellent access by public transport, just minutes from Národní třída metro station (line B) and tram line hub as well as Můstek (lines A, B) metro. Wide range of amenities and services available in close vicinity, quiet despite the central location.

The interior features living room with dining space and a fully fitted open kitchen, two separate bedrooms, full bathroom, shower bathroom with toilet, and a spacious entrance hall with access to the terrace situated in the courtyard of the building.

High standard materials and finishes, high ceilings, **oak floors**, tiles, heated bathroom floors, thermally insulated **double glazed windows**, central gas heating, **granite kitchen worktop**, dishwasher, induction cooktop, microwave oven, alarm, video entry phone, chip entry to the building. Common building charges and deposit for utilities are billed separately.



\* Area of the unit according to the Civil Code. The area consists of the sum total area of the entire unit bounded by perimeter walls.



Apartment Two-bedroom (3+kk)

Rented

104 m<sup>2</sup>, Prague 1, Nové Město, Jungmannova



TABULKA MÍSTNOSTÍ - 3.NPb			
č.m.	NÁZEV MÍSTNOSTI	m <sup>2</sup>	m <sup>2</sup>
3.05	CHODBA	9.27	
3.06a	CHODBA		7.34
3.06b	PROSTORÁČÍ SKLOPĚNÝ		1.33
3.06	SCHODSTĚ	25.93	
3.06a	SCHODSTĚ		11.33
3.06b	CHODBA		12.26
3.06c	PROSTORÁČÍ SKLOPĚNÝ		2.34
3.07	ATELIER	64.97	
3.07a	CHODBA		6.82
3.07b	WC		2.89
3.07c	SKLAD		4.29
3.07d	ATELIER		30.47
3.07e	ATELIER		12.54
3.07f	KOUPELNA		7.96
3.08	ATELIER	72.58	
3.08a	CHODBA		4.85
3.08b	KOUPELNA		4.81
3.08c	SKLAD		4.19
3.08d	ATELIER		32.94
3.08e	ATELIER		18.62
3.08f	KOUPELNA		7.18
3.09	BYT	104.52	
3.09a	CHODBA		12.25
3.09b	WC		3.81
3.09c	KUCHĚ		8.55
3.09d	OBÝVACÍ PROSTOR		35.77
3.09e	LŮŽNICE		13.61
3.09f	CHODBA		3.60
3.09g	KOUPELNA		8.03
3.09h	LŮŽNICE		18.10
3.10	BYT	102.41	
3.10a	CHODBA		11.81
3.10b	LŮŽNICE		14.89
3.10c	KOUPELNA		3.67
3.10d	TECHNICKÁ MÍSTNOST		1.98
3.10e	OBÝVACÍ PROSTOR		43.06
3.10f	LŮŽNICE		22.10
3.10g	KOUPELNA		5.90
3.11	SCHODSTĚ	27.54	
3.11a	SCHODSTĚ		8.65
3.11b	CHODBA		16.06
3.11c	PROSTORÁČÍ SKLOPĚNÝ		2.84
3.12	CHODBA	6.30	
3.12a	CHODBA		4.09
3.12b	PROSTORÁČÍ SKLOPĚNÝ		2.30
CELKOVÝ (bez výlohových sacích a oken)			
		413.53	
V1	VÝTAHOVÁ ŠACHTA	2.63	
V2	VÝTAHOVÁ ŠACHTA	2.93	
A03	ATRIUM 03	24.88	
A04	ATRIUM 04	22.09	
TOTAL FLATS WITH ATRIUMS		391.45	
TOTAL FLATS WITHOUT ATRIUMS		344.48	