



Apartment Two-bedroom (3+1)

117 m², Prague 1, Nové Město, Jungmannova

Rented





Apartment Two-bedroom (3+1)

Rented

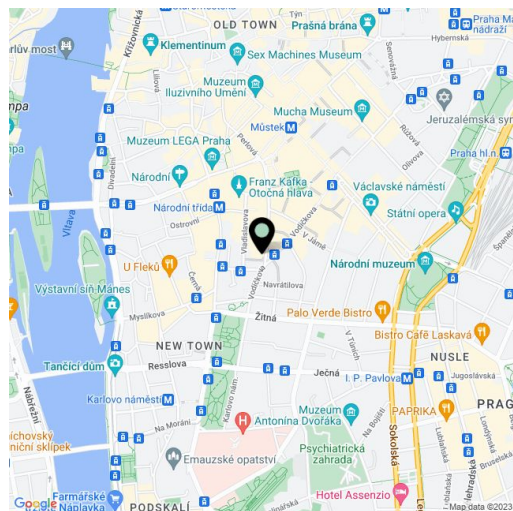
117 m², Prague 1, Nové Město, Jungmannova

Total area	173 m²
Floor area*	117 m²
Terrace	56 m²
Parking	-
Cellar	-
PENB	G
Reference number	27599
Available from	Immediately

Benefiting from a prime central location, a 56 m² terrace and direct access from the lift, this brand new 2-bedroom 2-bathroom flat is situated on the sixth top floor of a historic building which was completely rebuilt and modernized incl. a meticulously preserved original 1920s Art Deco facade and an internal passage connecting Jungmannova street with Purkyňova and Vladislavova streets. The front facade in the style of German Expressionism was designed by architects Viktor Lampl and Otto Fuchs. This unique multifunctional building is located in the financial and commercial center of Prague just moments from the new Quadrio shopping mall, with excellent access by public transport, just minutes from Národní třída metro station (line B) and tram line hub as well as Můstek (lines A, B) metro. Wide range of amenities and services available in close vicinity, quiet despite the central location.

The interior features living room with dining area, a fully fitted kitchen, two separate bedrooms, shower bathroom with toilet, bathroom with bath, bidet and toilet, and entrance hall. The terrace is accessible from all main rooms.

Air-conditioning, high standard materials and finishes, **oak floors**, tiles, oversized floor-to-ceiling windows, heated bathroom floors, thermally insulated double glazed windows, independent gas boiler, **granite kitchen** **worktop**, dishwasher, induction cooktop, microwave oven, alarm, video entry phone, chip entry to the building. Can be furnished at a higher rent. Common building charges and deposit for utilities are billed separately. Interior 116.76 m². Terrace 56.66 m².



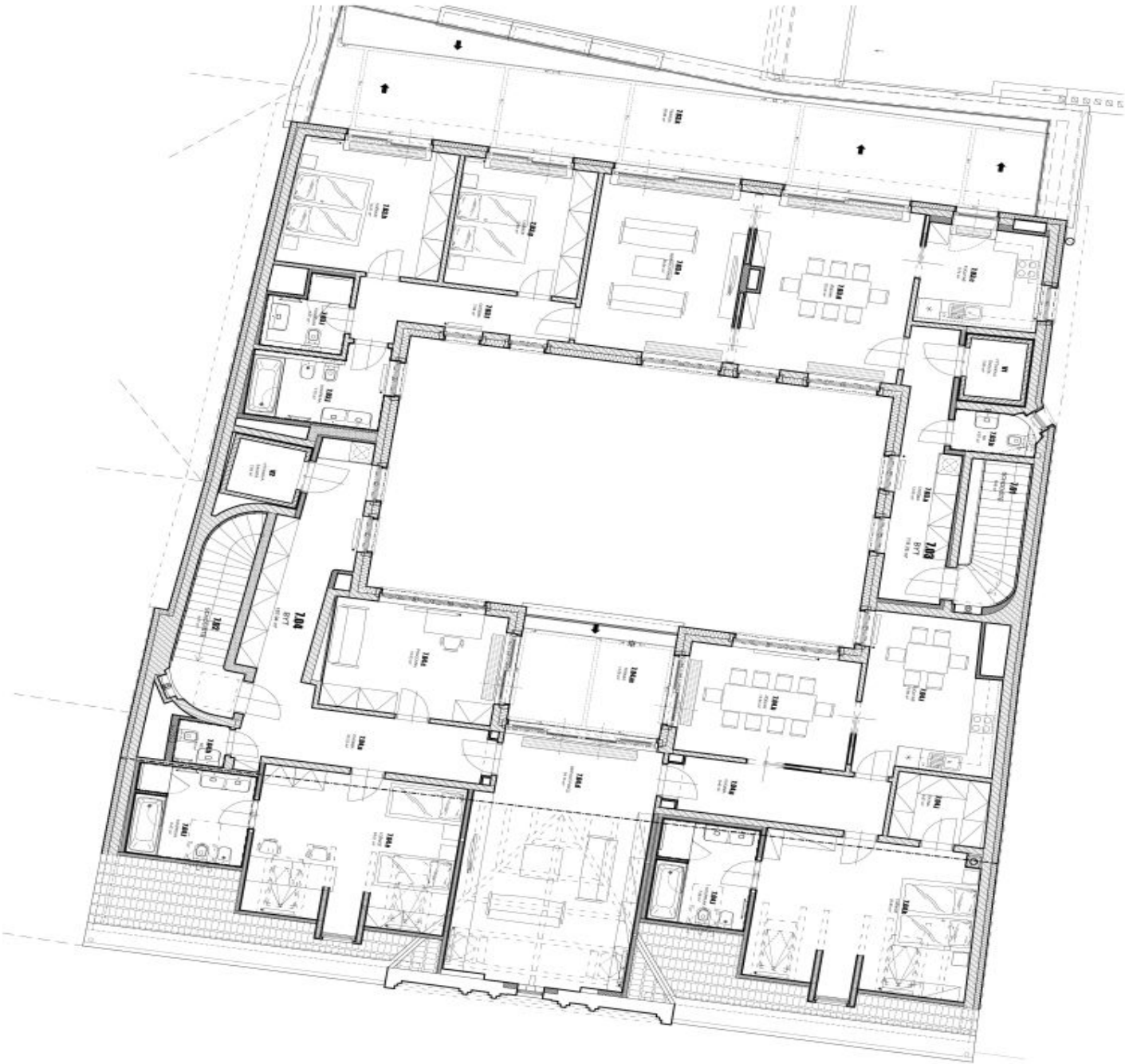
* Area of the unit according to the Civil Code. The area consists of the sum total area of the entire unit bounded by perimeter walls.



Apartment Two-bedroom (3+1)

Rented

117 m², Prague 1, Nové Město, Jungmannova



TABULKA MÍSTNOSTÍ - 7.NP			
č.m.	NAZEV MÍSTNOSTI	m²	m²
7.01	SPALOVNĚ	6,98	
7.02	SPALOVNĚ	8,77	
7.03	BRNÍ (bez terasy)	116,76	
7.03a	OKOBNÁ	12,06	
7.03b	WC	2,27	
7.03c	KUCHYNĚ	9,74	
7.03d	JEDLNA	22,03	
7.03e	OBYVACÍ PROSTOR	20,84	
7.03f	OKOBNÁ	7,59	
7.03g	LÓDNICE	13,65	
7.03h	LÓDNICE	16,31	
7.03i	KOUPELNA	4,27	
7.03j	KOUPELNA	7,70	
7.03k	TERASA	56,66	
7.04	BRNÍ (bez terasy)	187,94	
7.04a	OKOBNÁ	25,72	
7.04b	KOUPELNA	1,73	
7.04c	PRACOVNA	15,03	
7.04d	OBYVACÍ PROSTOR	34,15	
7.04e	LÓDNICE	24,01	
7.04f	KOUPELNA	8,47	
7.04g	OKOBNÁ	9,40	
7.04h	JEDLNA	14,94	
7.04i	KUCHYNĚ	15,85	
7.04j	SPALNÁ	4,97	
7.04k	LÓDNICE	25,80	
7.04l	KOUPELNA	7,88	
7.04m	TERASA	13,08	
	CELKOVÝ (s terasami, bez výhledových bodů)	359,78	
V1	VÝTAHOVÁ ŠACHTA	2,63	
V2	VÝTAHOVÁ ŠACHTA	2,93	
	TOTAL FLATS WITH TERRACES	374,44	
	TOTAL FLATS WITHOUT TERRACES	304,70	