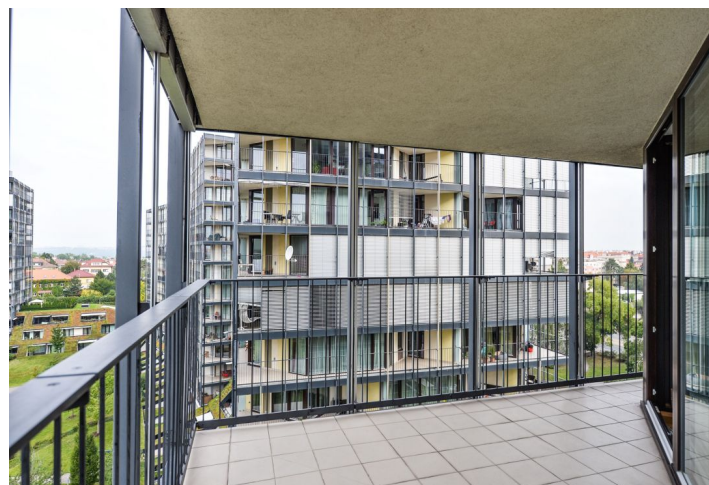
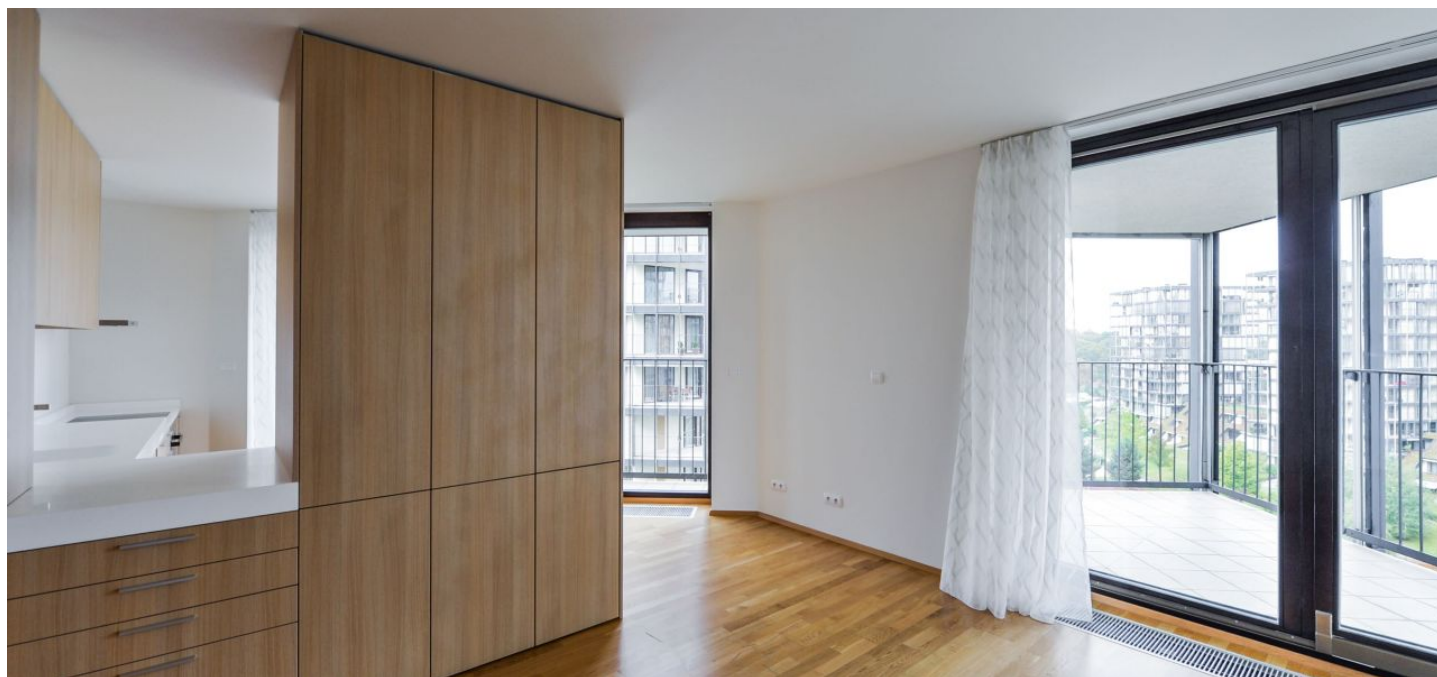




## Apartment Two-bedroom (3+kk)

Sold

93 m<sup>2</sup>, Prague 3, Žižkov, Pitterova

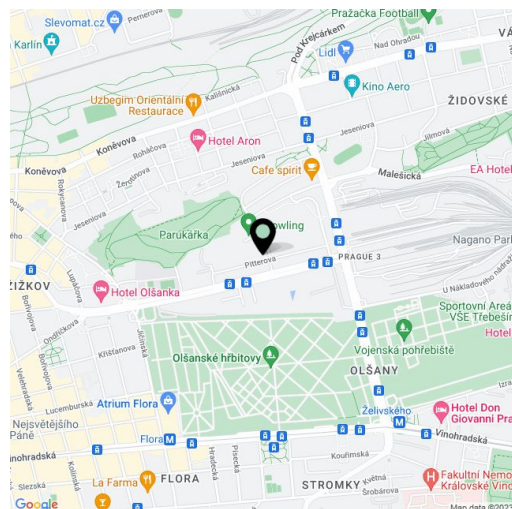




## Apartment Two-bedroom (3+kk)

**Sold**93 m<sup>2</sup>, Prague 3, Žižkov, Pitterova

Total area	123 m <sup>2</sup>
Floor area*	93 m <sup>2</sup>
Terrace	30 m <sup>2</sup>
Parking	2 garage parking spaces
Garage	Yes
Cellar	Yes
Service price	8 000 CZK monthly
PENB	G
Reference number	26939



\* Area of the unit according to the Civil Code. The area consists of the sum total area of the entire unit bounded by perimeter walls.

**Spacious apartment with two garage spaces and a southwest-oriented, illuminated terrace, which forms a gallery around the entire apartment and offers views of a private park in front of the house and Parukářka Park. Located on the 9th floor of a modern residence with reception.**

From the entrance hall there is access to all the rooms in the apartment: to the utility room (with a washing machine connection) and to a separate toilet through the bathroom that adjoins the **bedroom**. Next through a glass door, you can enter a large, **thirty-five meter living room** with a partially separated asymmetrical **kitchen** and a **bedroom with an en-suite bathroom and walk-in closet**. **All rooms have access to the balcony.**

The kitchen is equipped with **BEKO** appliances, the countertop has an integrated sink without joints. Sanitary facilities are by **Duravit** and **Hüppe**, **Grohe** water taps, **Hansgrohe** shower set. The walls are decorated with **design wallpaper**. The floors in the living area and in the corridor are **wooden three-layered lamella**, while the other areas have **sintered floor tiles**. The bathrooms have **underfloor heating**. Heating is remote, there are **convectors** on the floor. The social areas are equipped with **air-conditioning**. Doors are made of wooden veneer, without frames. Security entrance door. Natural light is provided with large-size **wooden insulating Euro windows**, which can be completely covered by **outdoor electric blinds** located on the balcony railing, thus ensuring the privacy of the balcony. The house is guarded by a **reception** and a **camera system**, gates, entrances and common areas have **access with a chip**, the apartment has a **smoke sensor**. The entrance door of the apartment is secured by a doorbell with camera.

The **Central Park** residence, in which the apartment is located, was designed by the **A69 studio** and was awarded the **Grand Prix of Architects 2010 - National Architecture Award**. Nearby are cafes, groceries, playgrounds, kindergartens and basic schools, a medical center and other services. Tram stops with many connections are just a few steps from the house. The **Zelivského metro station** (line A) is two stops by tram.

Interior 92,66 m<sup>2</sup>, terrace 30,43 m<sup>2</sup>, cellar 7,37 m<sup>2</sup>.





## Apartment Two-bedroom (3+kk)

93 m<sup>2</sup>, Prague 3, Žižkov, Pitterova

Sold

# JEDNOTKA / UNIT 202

Byt / Flat  
3+kk / 2-bedroom  
Objekt / Building B2  
Podlaží / Floor 9

