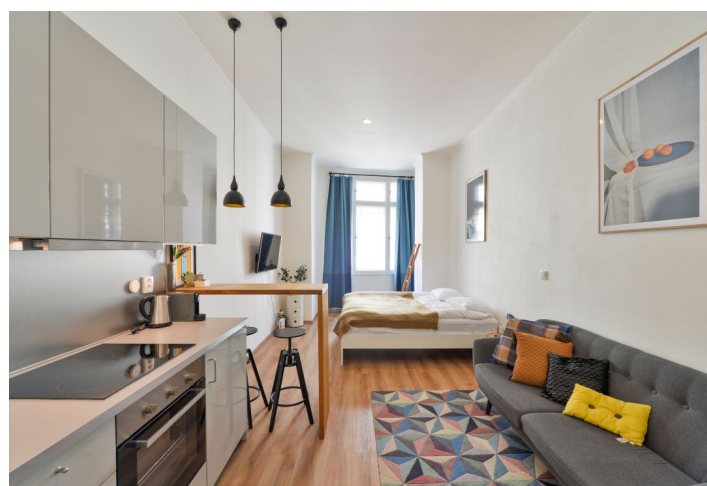




## Apartment Studio (1+kk)

35 m², Prague 5, Smíchov, Zborovská

Rented





## Apartment Studio (1+kk)

**Rented**

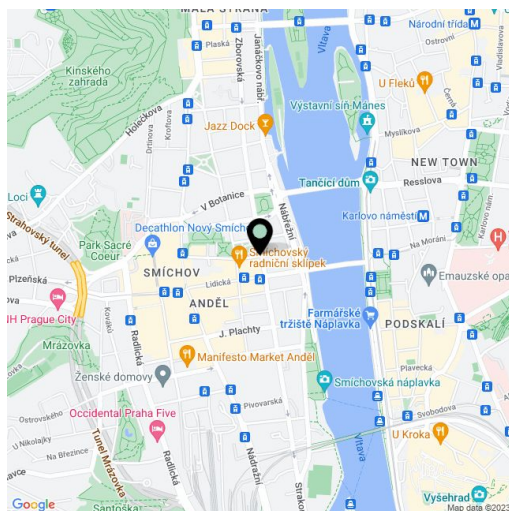
35 m², Prague 5, Smíchov, Zborovská

Total area	35 m²
Parking	-
Cellar	-
PENB	E
Reference number	26907
Available from	Immediately

Completely reconstructed furnished studio flat with preserved original details, situated on the third floor of a fully renovated historic building with an elevator and wheelchair access. Located one block from the Vltava riverbank, just a short walk from Petřinské sady Park, the Nový Smíchov entertainment and shopping center, and the French School. Great access to the city center - a few min. walk to the Anděl metro station.

The studio consists of a living room with a fully fitted open plan kitchen and a bedroom zone separated by a partition, a bathroom with a sink and a walk-in shower, a separate toilet, and an entry hall with a built-in wardrobe.

Features include wooden flooring, floor heating, high ceilings, large windows, an electric boiler, and a washing machine. Parking is possible in the "blue zone." Deposit for common building charges, energies and internet CZK 3,059/month. Available from mid August 2021.



\* Area of the unit according to the Civil Code. The area consists of the sum total area of the entire unit bounded by perimeter walls.