



## House Three-bedroom (4+kk)

230 m², Praha-východ, Bořanovice

**Sold**





## House Three-bedroom (4+kk)

**Sold**

230 m², Praha-východ, Bořanovice

Plot	891 m²
Foot print	158 m²
Garden	733 m²
Parking	Garage and outdoor parking space
Garage	Yes
Cellar	-
PENB	C
Reference number	26821

A lavender-lined path leads from the gate to this pleasant family house with large windows. The house is located in a quiet village, just five minutes by car from Prague.

From the hallway, the door leads to the **bathroom**, a **living room** and a **walk-in closet**, which also is accessible from the garage. From the living room, with a woodburning **fireplace**, through several French windows **you can walk to the terrace and the garden**. The room also has a spacious kitchen, which is illuminated by a **window that overlooks greenery**. There are stairs to the upper floor from the living room. Here is a **large walk-in closet**, bathroom with bathtub, shower, toilet and bidet, **two children's rooms** and a **parent's bedroom with walk-in closet**.

The insulated house has **wooden floors, windows and doors** (including **security entrance door**). In the tiled rooms there is **floor heating**. Heating is provided with a **Dakon gas boiler**. The fully equipped **Sykora kitchen** has a ceramic hob, oven and an **Electrolux dishwasher**. Sanitary equipment is by **JIKA and Hansgrohe**. The well-kept irrigated garden has a **well** and a 4.5 meter long **swimming pool with countercurrent**. **The surface of the terrace and the area by the pool is tropical wood**. The house is secured by an **alarm with connection to a security agency**.

The house is situated in a **quiet place** in the area of family houses. 300 meters from the house there is a restaurant (others are nearby), a grocery and a **bus stop**, 13 minutes to the **Ládví metro station (line C)**. Nearby is a swimming pool, skate park, cycle path and an educational trail.

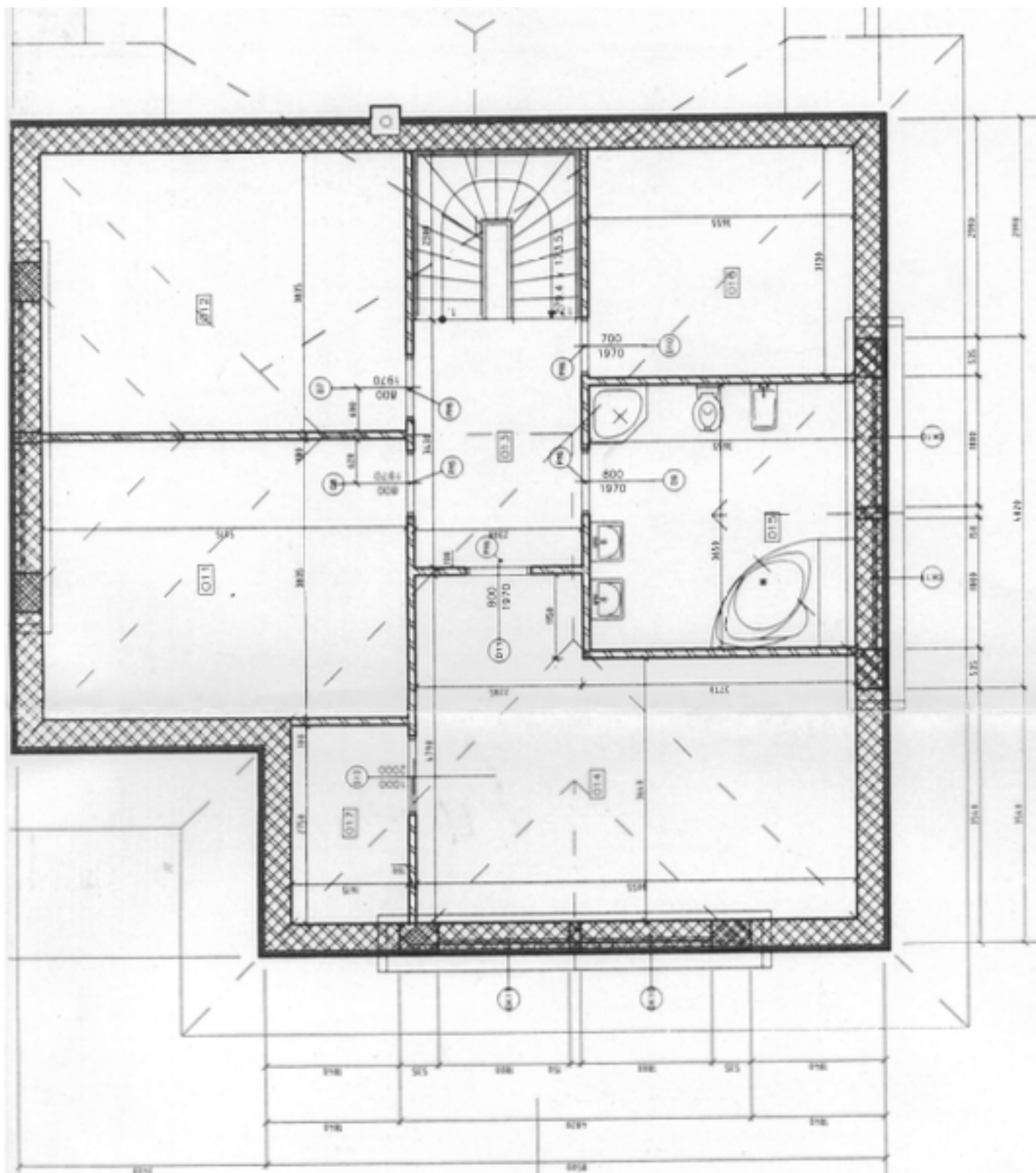
Interior 230 m², garden 733 m², built-up area 158 m², plot 891 m²



## House Three-bedroom (4+kk)

**Sold**

230 m², Praha-východ, Bořanovice







## House Three-bedroom (4+kk)

**Sold**

230 m², Praha-východ, Bořanovice

