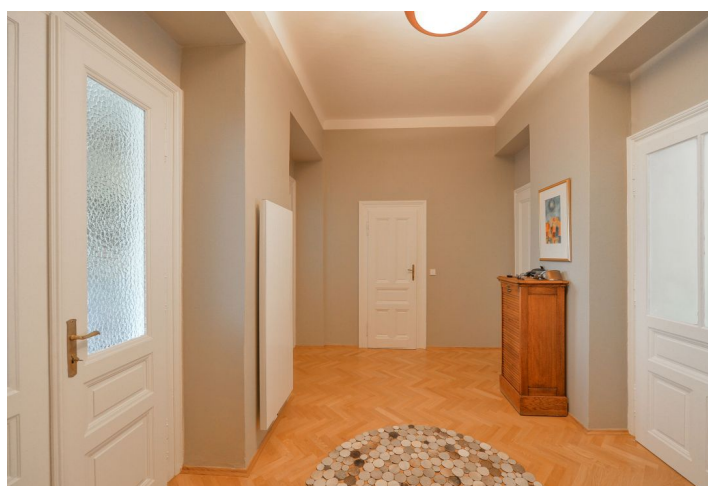
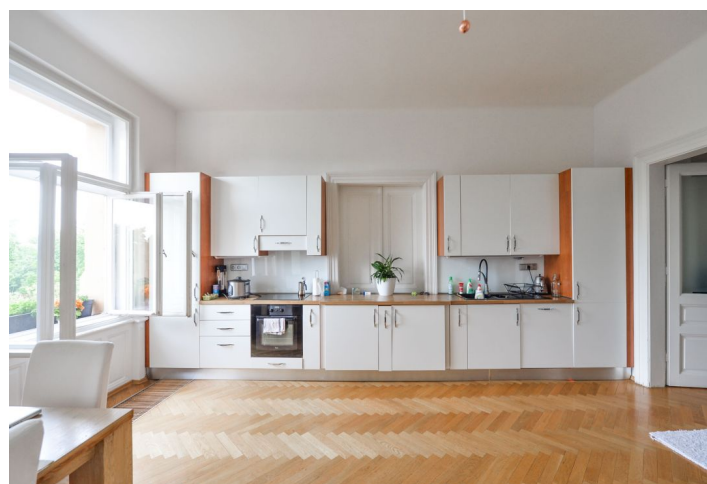




Apartment Three-bedroom (4+kk)

Rented

124 m², Prague 2, Vinohrady, Na Švihance





Apartment Three-bedroom (4+kk)

Rented

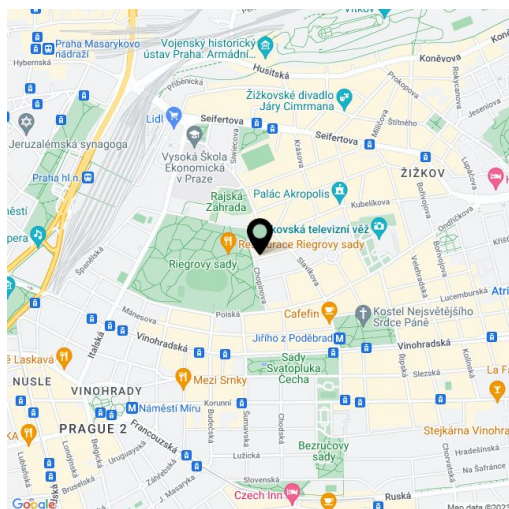
124 m², Prague 2, Vinohrady, Na Švihance

Total area	124 m²
Parking	-
Cellar	-
PENB	G
Reference number	26571
Available from	Immediately

Benefiting from a wonderful location next to the Riegrovy sady park, this is a fully refurbished unfurnished 3-bedroom flat with direct views of the park. Situated on the second floor of a renovated traditional residential building with lift, reception and conference room. Very quick access to the city center, located just a short walk from Jiřího z Poděbrad Square with metro station, rich amenities and a very popular regular produce market.

The interior includes living room with dining area and a fully fitted open kitchen, three bedrooms, bathroom with bathtub and toilet, utility room, guest toilet, and a spacious central entrance hall.

Preserved original details, high ceilings, solid wood parquet floors, tiles, security entry door, gas heating, camera system. Monthly deposit for common building charges, water and heating CZK 3000/month. Electricity is billed separately (transfer to the tenant). Unfurnished.



* Area of the unit according to the Civil Code. The area consists of the sum total area of the entire unit bounded by perimeter walls.