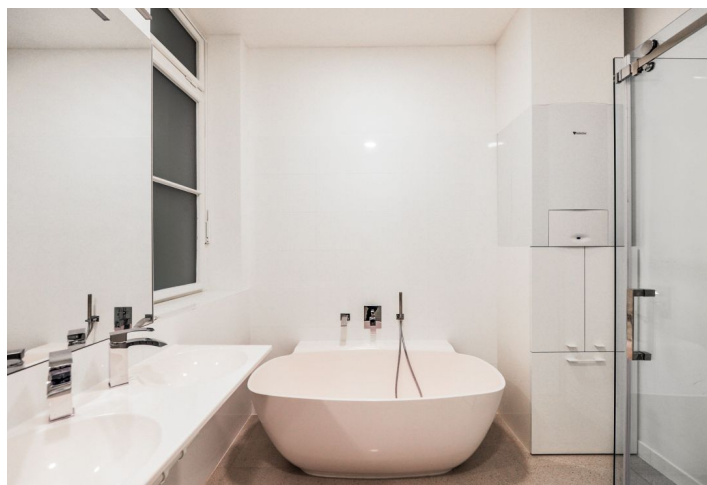




## Apartment Two-bedroom (3+kk)

Rented

137 m<sup>2</sup>, Prague 1, Josefov, U Starého hřbitova





# Apartment Two-bedroom (3+kk)

Rented

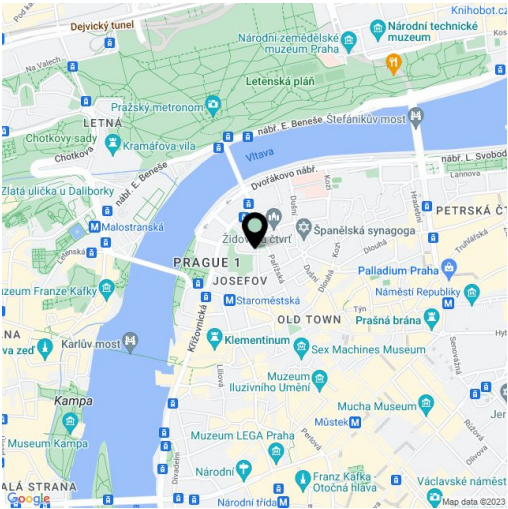
137 m², Prague 1, Josefov, U Starého hřbitova

Total area	137 m²
Parking	-
Cellar	Yes
Service price	Services and water CZK 1,000/person/month. Gas and electricity - transferred to the tenant.
PENB	Not required
Reference number	26543
Available from	Immediately

Living in the very heart of the city in a listed building by the famous architect Antonín Engel, on a quiet side street of the former Jewish Quarter and in the vicinity of majestic Pařížská Street and Miloš Forman Square. This apartment offering unique views of the Old Jewish Cemetery is situated on the 1st floor of a fully refurbished traditional building with an elevator. A very accessible location with a rich cultural life and a wide selection of restaurants and cafes. There are also good civic amenities nearby, and the Rudolfinum and the Faculty of Arts of the Charles University are also close-by.

The interior features two separate bedrooms - one with a fitted walk-in closet, a living room with a fully fitted open plan kitchen and pantry, a bathroom with a bathtub, walk-in shower, and toilet, a guest toilet, and a spacious entry hall.

Preserved original features, large windows, high ceilings, wooden floors, two original ceramic stoves, security entry door, built-in wardrobes and storage, gas boiler, alarm, video entry phone, basement storage unit. There is a private courtyard available to the tenants.



\* Size of the unit according to the Housing Act.  
The area consists of the sum total of the internal area of every room.