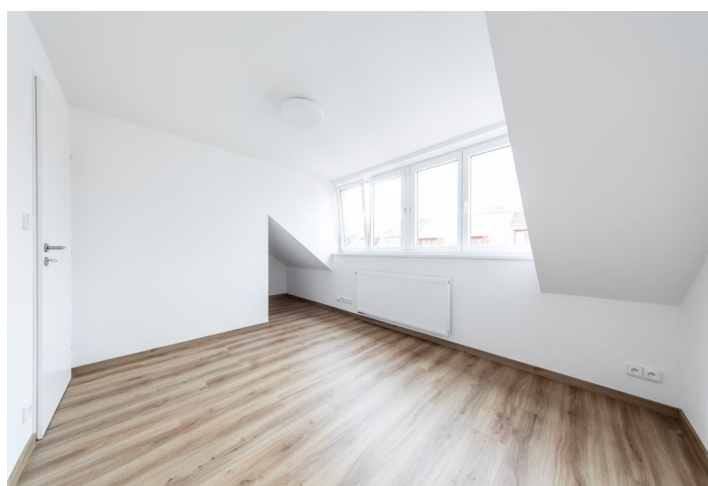
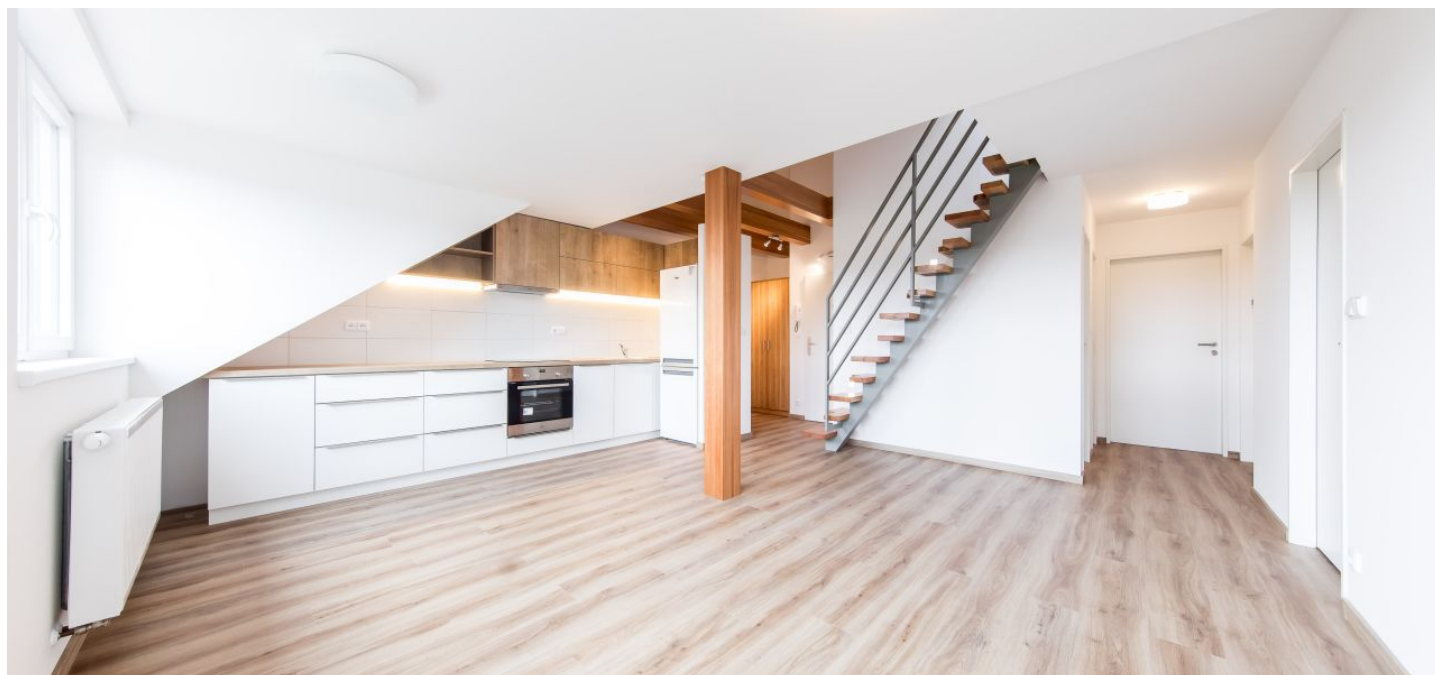




Apartment Two-bedroom (3+kk)

Rented

70 m², Prague 6, Liboc, Jenečská





Apartment Two-bedroom (3+kk)

Rented

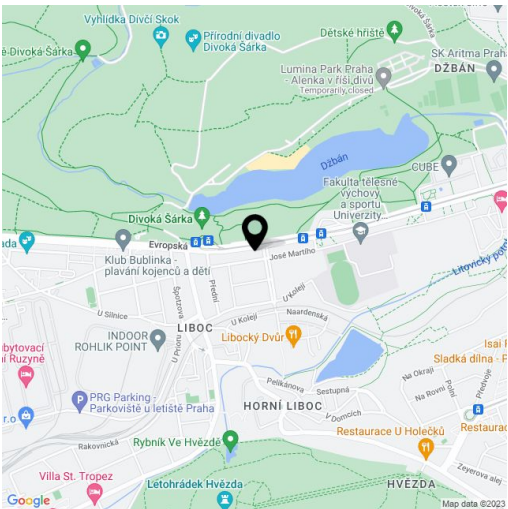
70 m², Prague 6, Liboc, Jenečská

Total area	70 m²
Parking	Parking on the plot.
Cellar	Yes
PENB	C
Reference number	26407
Available from	Immediately

This is a fully refurbished 2-bedroom split-level attic flat with views of the Hvězda (Star) summer palace and the surrounding greenery, on the second floor of a completely refurbished 1920s' townhouse with a shared back garden and parking. Located in the green residential neighborhood of Liboc, Prague 6, just moments from the Divoká Šárka natural preserve with the Džbán Reservoir outdoor swimming pool and multiple sports and relaxation opportunities. Location with very good access to the city center, Václav Havel Airport and international schools. A few tram stops to Nádraží Veleslavín metro station, line A.

The lower level includes a living room with a fully fitted kitchen and dining area, two bedrooms, bathroom with a walk-in shower, a separate toilet, walk-in closet, and an open entrance hall. The upper floor offers a spacious open attic playroom (or study or guest bedroom).

Vinyl floors, tiles, gas boiler, dishwasher, shared **garden**, shared **basement storage**. No lift. **Parking** available on the plot (included). Deposit for service charges and water CZK 800/person/month. Gas and electricity are billed separately.



* Area of the unit according to the Civil Code. The area consists of the sum total area of the entire unit bounded by perimeter walls.