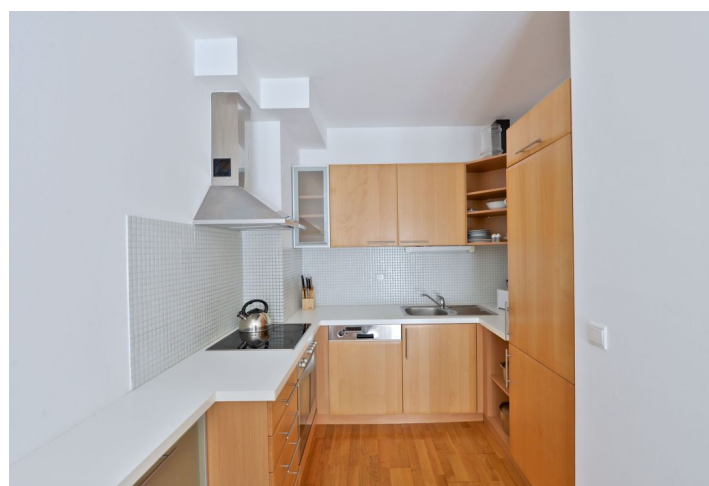
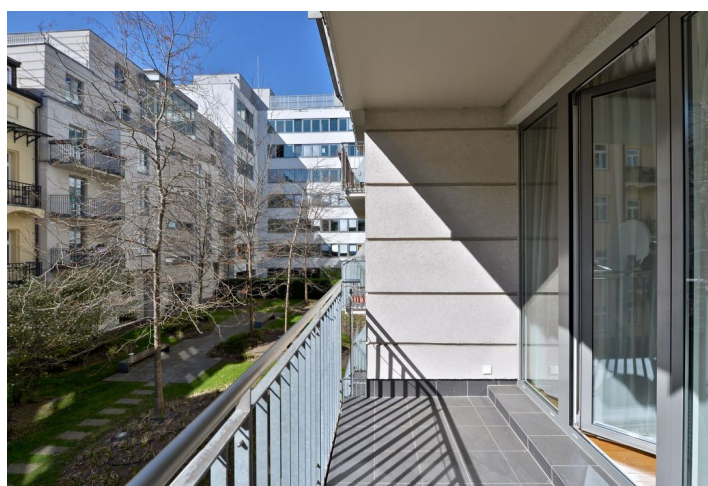
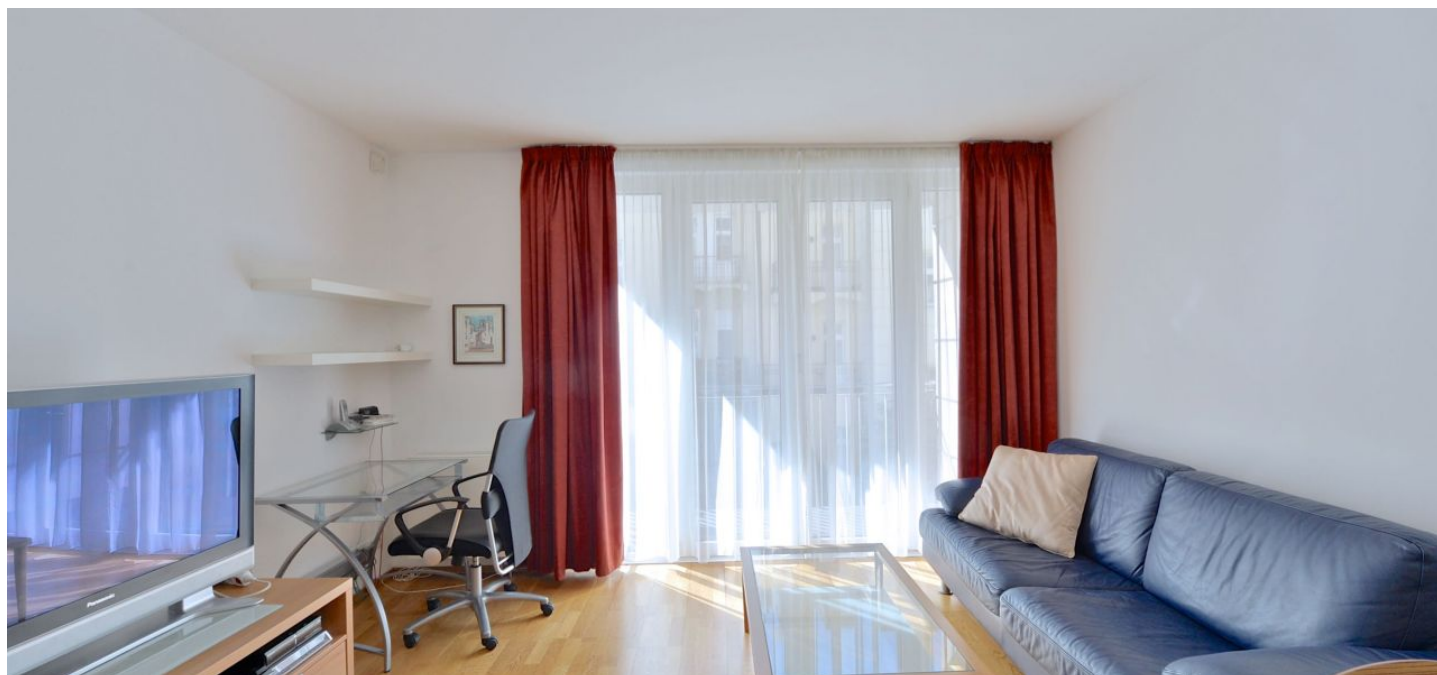




Apartment One-bedroom (2+kk)

Rented

50 m², Prague 5, Smíchov, Karla Engliše





Apartment One-bedroom (2+kk)

Rented

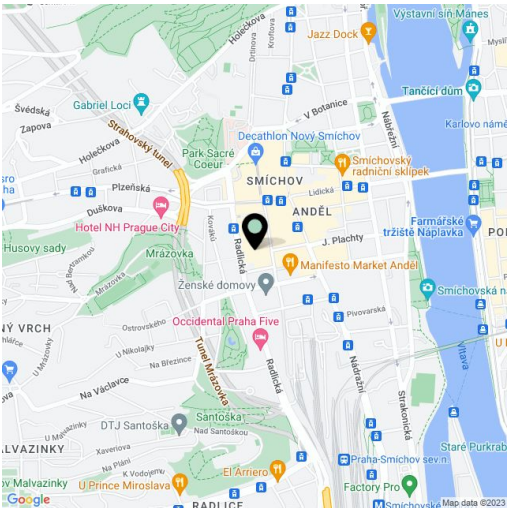
50 m², Prague 5, Smíchov, Karla Engliše

Total area	56 m²
Floor area*	50 m²
Balcony	6 m²
Parking	1 garage parking space included in the price
Garage	Yes
Cellar	Yes
PENB	G
Reference number	26265
Available from	Immediately

South-oriented 1-bedroom flat boasting a 6 m² balcony, situated on the 2nd floor of a contemporary residential building with a lift, security, and underground parking. Located in the heart of the Anděl neighborhood, with quick metro and tram connections to the city center.

The interior features a living room with a fully fitted open kitchen, study area, access to the balcony facing a quiet green courtyard; one bedroom with built-in wardrobes, bathroom with bathtub and toilet, and entry hall with built-in wardrobes.

Wooden floating floors throughout, security entry door, video entry phone, alarm, security camera system in the building. One underground garage parking space and a cellar included. Great location in one of Prague's fastest developing city center areas, with new office buildings, design hotels, good restaurants, bars and cafes, shopping malls, cinemas and other entertainment facilities, convenient to the French School. Common building charges approx. CZK 2,000/month. Gas and electricity will be transferred to the tenant's name.



* Area of the unit according to the Civil Code. The area consists of the sum total area of the entire unit bounded by perimeter walls.