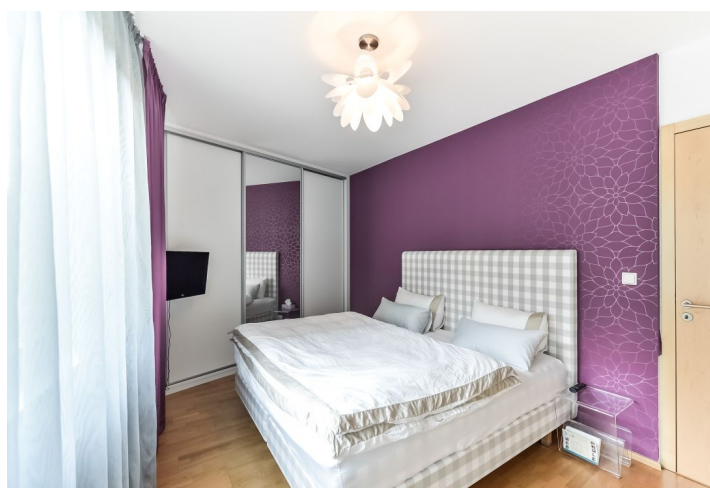




Apartment Two-bedroom (3+kk)

Sold

98 m², Prague 3, Žižkov, Jeseniova





Apartment Two-bedroom (3+kk)

Sold98 m², Prague 3, Žižkov, Jeseniova

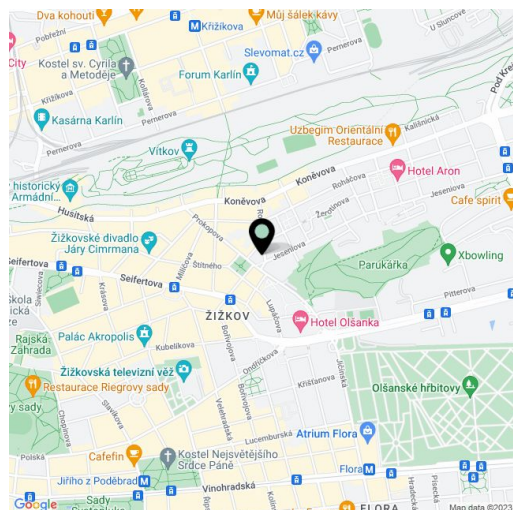
| | |
|------------------|-------------------------|
| Total area | 105 m ² |
| Floor area* | 98 m ² |
| Balcony | 4 m ² |
| Loggia | 3 m ² |
| Parking | 2 garage parking spaces |
| Garage | Yes |
| Cellar | Yes |
| Service price | 7 000 CZK monthly |
| PENB | C |
| Reference number | 26170 |

Attractive 2-bedroom flat with a south-facing terrace and balcony, in close vicinity of Parukářka Park, located on the 1st floor of a residential project from 2010 with a lift and 24-hour reception, in a quiet part of Žižkov, Prague 3.

Although the apartment is located on the 1st floor, it corresponds to the 2nd floor thanks to the location of the house on the sloped piece of land. The interior consists of a living room with fully fitted kitchen and dining area with access to the **terrace oriented to the landscaped courtyard**, 2 bedrooms (one with a south-facing balcony), bathroom with bathtub, shower, double sink and toilet, storeroom, separate toilet and an entrance hall. The interior features **wooden floating floors, wooden eurowindows**, blinds, fully equipped kitchen with built-in appliances, built-in wardrobes, videophone. Heating is provided by the central boiler room in the house. **The purchase price includes 2 garage parking spaces and a cellar. There is a lockable playground for residents only.**

Quiet location between Parukářka and Vrch Vitkov parks, just a 5-minute walk from a tram stop with direct connections to the metro and Atrium Flora Shopping mall. In the vicinity you can find complete amenities including a swimming pool and fitness center at the Olšanka Hotel.

Interior 93.2 m², terrace 3.9 m², balcony 2.3 m², cellar 5.6 m².



* Area of the unit according to the Civil Code. The area consists of the sum total area of the entire unit bounded by perimeter walls.