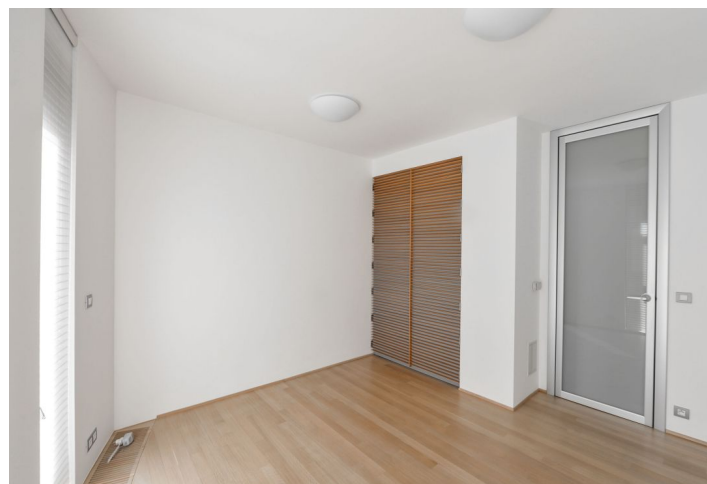




## Apartment Two-bedroom (3+kk)

Rented

116 m<sup>2</sup>, Prague 4, Podolí, Nad Cementárnou





## Apartment Two-bedroom (3+kk)

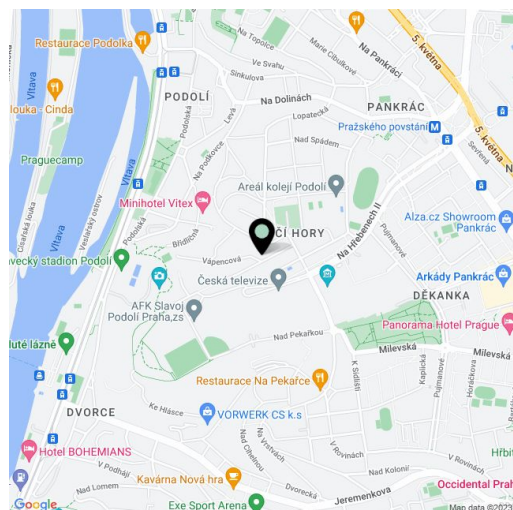
**Rented**116 m<sup>2</sup>, Prague 4, Podolí, Nad Cementárnou

Total area	116 m <sup>2</sup>
Parking	Two garage spaces and one covered outdoor parking space included.
Garage	Yes
Cellar	Yes
PENB	D
Reference number	25532
Available from	Immediately

High quality 2-bedroom flat with beautiful unobstructed panoramic views of Prague including the Vltava River, the Prague Castle, Vyšehrad Castle and Podolí neighborhood. Situated on the second floor of a top standard modern villa with lift and parking. Located in a quiet cul-de-sac right on the edge of Kavčí hory Park in the immediate vicinity of the Czech TV grounds. Sought after area with quick access to the city center, full amenities within easy reach, just a short walk from Pražského povstání metro station, and convenient to Prague 4 international schools. The villa was awarded first prize in the Best of Realty competition.

The interior features a spacious living room with a fully fitted open kitchen and dining area, two bedrooms, a full bathroom, and a large entry hall.

High standard materials and finishes, solid wood parquet floors, tiles, security entry door, lots of built-in wardrobes and storage, large French windows, outer and inner blinds, central heating, video entry phone, alarm connected to a security agency, basement storage. Two garage spaces and one outdoor parking space included. Deposit for common building charges and utilities CZK 7,000 per month. **Special offer until the end of June 2017!**



\* Area of the unit according to the Civil Code. The area consists of the sum total area of the entire unit bounded by perimeter walls.