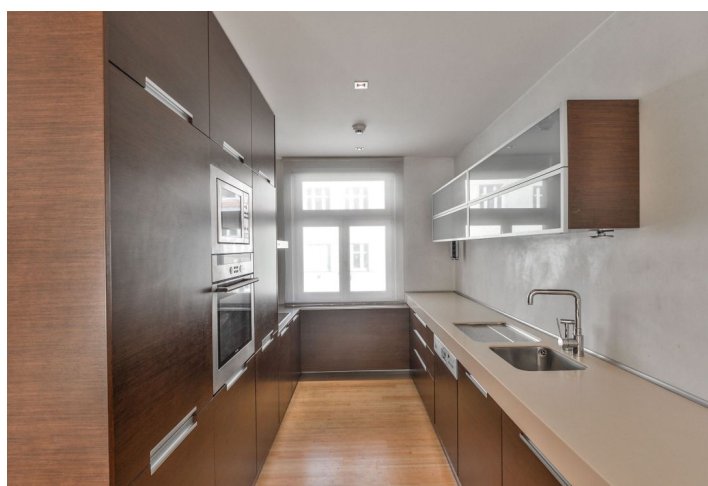
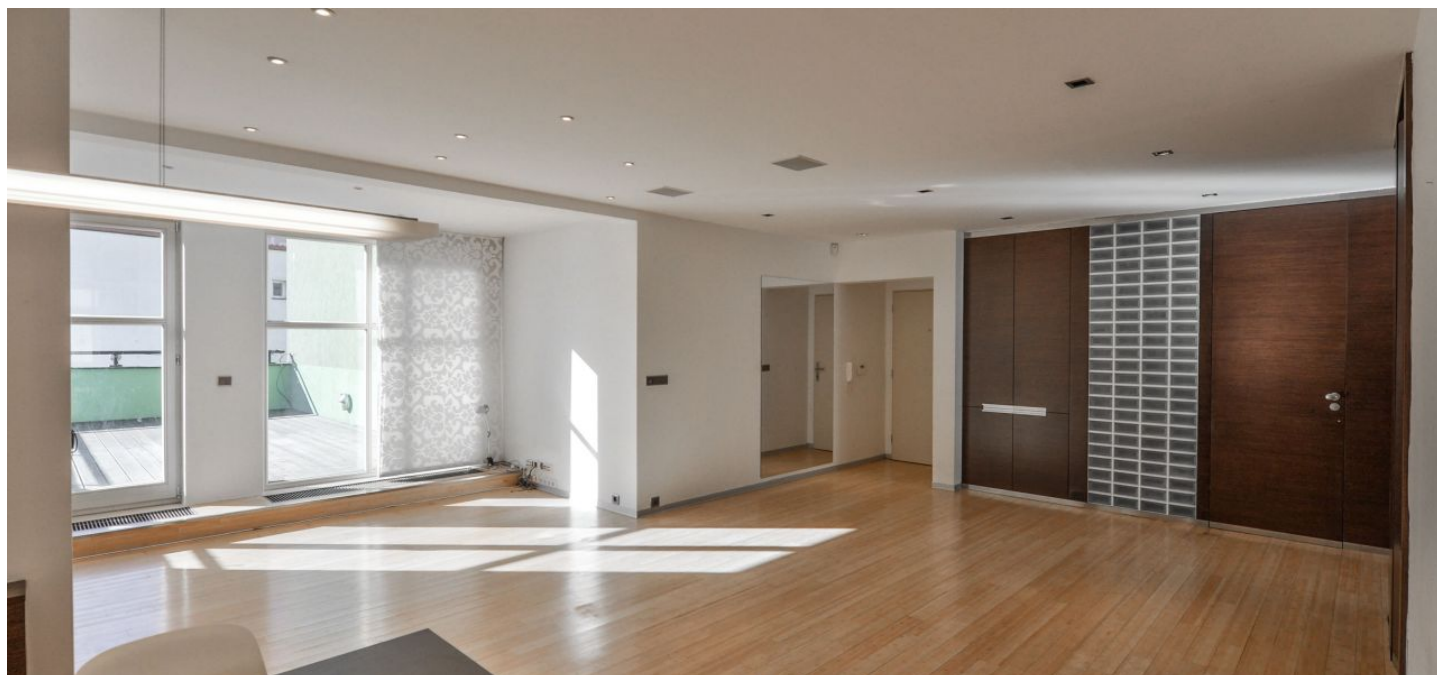




Apartment Two-bedroom (3+kk)

Rented

92 m², Prague 6, Břevnov, Šlikova





Apartment Two-bedroom (3+kk)

Rented

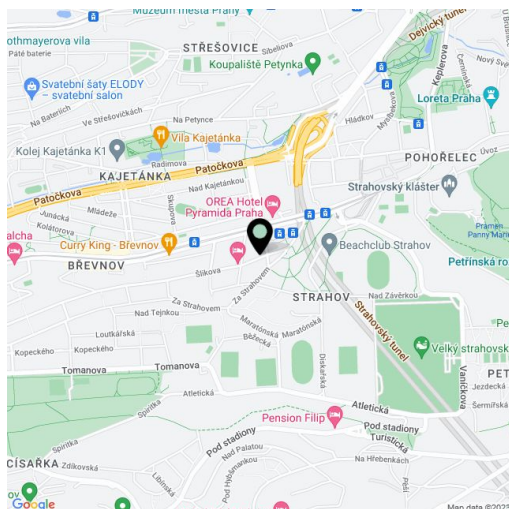
92 m², Prague 6, Břevnov, Šlikova

Total area	120 m ²
Floor area*	92 m ²
Terrace	28 m ²
Parking	Garage parking space.
Garage	Yes
Cellar	-
PENB	G
Reference number	25495
Available from	Immediately

Bright and quiet partly furnished 2-bedroom flat after a complete reconstruction boasting a lovely 28 m² south facing terrace. Situated on the third floor of a renovated residential building with lift. Located within walking distance of the Prague Castle and Kajetánka and Ladronka Parks, in a sought after residential area with excellent amenities and easy access to metro, the city center and Václav Havel Airport.

The interior includes living / dining room with a fully fitted open kitchen and terrace access, two bedrooms, and a bathroom with bathtub, walk-in shower and toilet.

Bamboo floors, tiles, new wooden windows, security entry door, plenty of built-in storage space, suspended ceilings with spotlights, central heating, washer, dishwasher, microwave oven, TV, alarm, satellite reception. Can be unfurnished. One on-site garage parking space included. Common building charges, heating and water around CZK 5000 per month. Electricity will be transferred to the tenant. Interior 91.9 m², terrace 28.3 m².



* Area of the unit according to the Civil Code. The area consists of the sum total area of the entire unit bounded by perimeter walls.