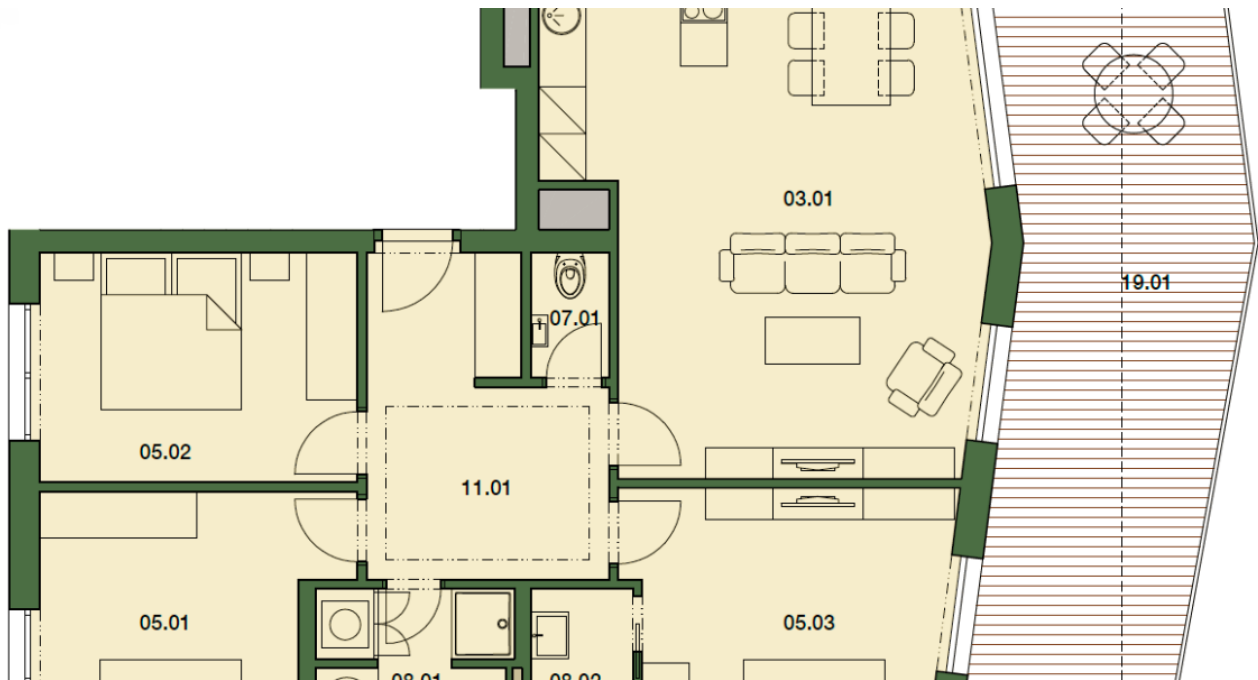




## Apartment Three-bedroom (4+kk)

107 m², Beroun

**Sold**





## Apartment Three-bedroom (4+kk)

**Sold**107 m<sup>2</sup>, Beroun

Total area	142 m <sup>2</sup>
Floor area*	107 m <sup>2</sup>
Terrace	35 m <sup>2</sup>
Parking	2 outdoor parking spaces
Cellar	Yes
PENB	B
Reference number	25189

\* Area of the unit according to the Civil Code. The area consists of the sum total area of the entire unit bounded by perimeter walls.

**Modern apartment with a large, southwest-facing terrace in an attractive location just a few minutes' walk from the Beroun city center and within easy reach of the beautiful countryside of PLA Křivoklátsko and Český Kras. The newly emerging residential building will benefit from advantages of a fast-developing city surrounded by forests and many natural and historical sites, as well as the easy accessibility to Prague and Pilsen.**

The layout of this 4th floor apartment consists of a living room with preparation for kitchen, dining area and terrace access, master bedroom with en-suite bathroom and terrace access, 2 children's bedrooms, a shared bathroom, guest toilet, and an entrance hall.

The equipment includes floating laminate flooring with white skirting boards, ceramic tiles, floor tiles and oil painting, windows with double glazing and preparation for outdoor blinds, fire safety entrance doors, smoke detectors and home phone. The purchase price includes **2 outdoor parking spaces** and a **cellar**.

Beroun offers excellent transport links to Prague (40 minutes by train, 20 minutes by car to the nearest metro station), excellent amenities and endless opportunities for active recreation and relaxation. **The city is surrounded by forests, castles, ruins and other excursion sites** in nearby PLA Křivoklátsko, Český kras, Kalrštejn and Koněprusy caves. **Three golf courses nearby** - Beroun Golf Resort, Botanica and Albatross, a member of the European Tour Destination. The site offers a nursery, primary and secondary schools, restaurants, a water park, a modern sports center with a climbing wall and other services.

Interior 109.6 m<sup>2</sup>, terrace 35.2 m<sup>2</sup>