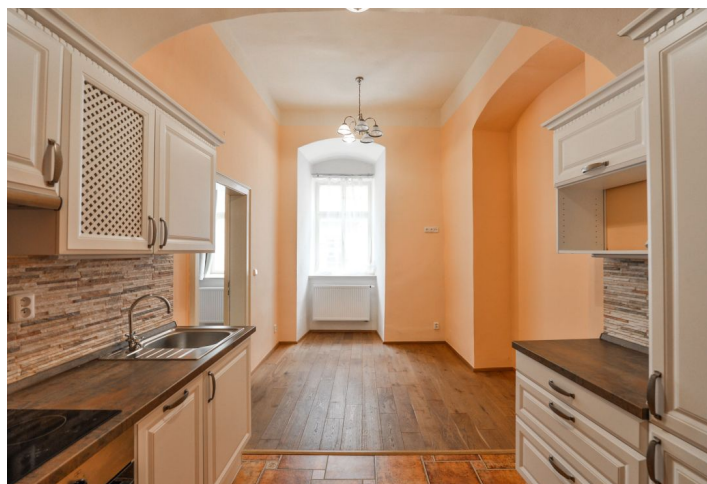




Apartment Two-bedroom (3+1)

Rented

126 m², Prague 1, Malá Strana, Thunovská





Apartment Two-bedroom (3+1)

Rented

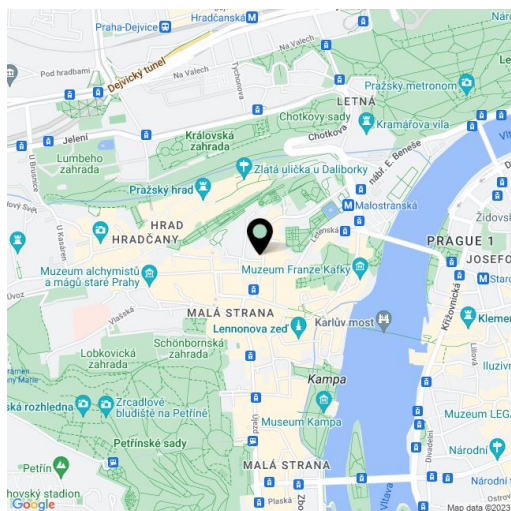
126 m², Prague 1, Malá Strana, Thunovská

| | |
|------------------|-------------|
| Total area | 126 m² |
| Parking | - |
| Cellar | - |
| PENB | G |
| Reference number | 25141 |
| Available from | Immediately |

Special offer! Two adjacent reconstructed flats with 2 bathrooms and preserved original details. Situated on the first floor with a private separate entrance, in an historic building with a green courtyard and no lift. Located in the romantic Malá Strana neighborhood right beneath the Prague Castle, moments from the Charles Bridge and trams on Malostranské Square, and a few minute walk to Malostranská metro station.

The first flat (78 m²) includes a fully fitted walk-through kitchen, a spacious living room, one bedroom, shower bathroom with toilet and utility area, and entry hall with built-in wardrobes and storage. The second flat - a studio - (48 m²) includes a fully fitted walk-through kitchen with dining area, living room / bedroom, shower bathroom with sink and toilet, and an open entry hall with built-in storage.

Green courtyard and historic street views, wooden floors and tiles, storage, gas boiler, double interior doors, gas boiler, dishwasher. Common building charges and water approx. CZK 1500 per month. Gas and electricity are billed separately.



* Area of the unit according to the Civil Code. The area consists of the sum total area of the entire unit bounded by perimeter walls.