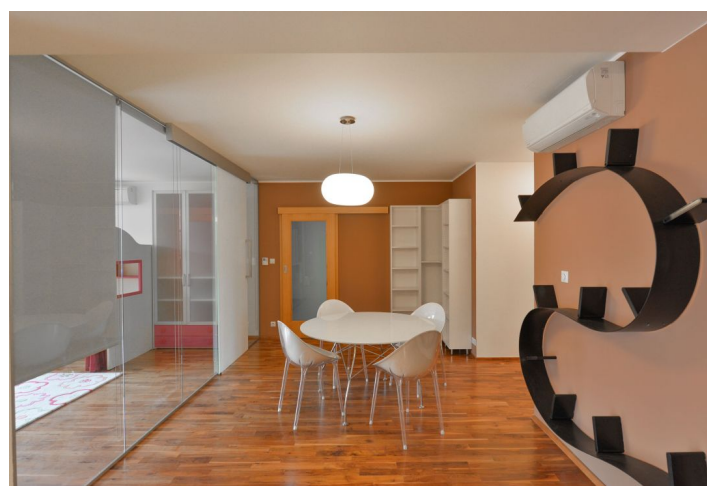




Apartment Four-bedroom (5+kk)

Rented

158 m², Prague 5, Smíchov, Na Zatlance





Apartment Four-bedroom (5+kk)

Rented

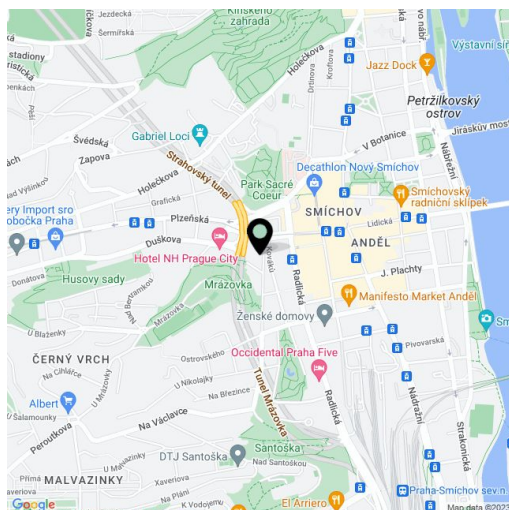
158 m², Prague 5, Smíchov, Na Zatlance

Total area	178 m²
Floor area*	158 m²
Balcony	15 m²
Loggia	5 m²
Parking	Two garage parking spaces.
Garage	Yes
Cellar	Yes
PENB	B
Reference number	25063
Available from	Immediately

Fully furnished high standard 4-bedroom 3-bathroom flat with 3 balconies, 2 winter gardens (enclosed balconies) and nice green views. Situated on the fourth floor of a modern residential project with a shared private courtyard garden, underground parking, security and on-site property manager. Located in a quiet part of Smíchov with full amenities, in close vicinity of Nový Smíchov shopping and entertainment center and Anděl metro station, and with very quick connection to the city center.

The interior includes a comfortable living room with a fully fitted open kitchen, dining area and study corner, four bedrooms, three bathrooms, walk-in closet, two spacious storage rooms, guest toilet, and entrance hall with built-in storage.

Air-conditioning, wooden floors, security entry door, built-in wardrobes, French windows, blinds, washer, Miele kitchen appliances, TV, video entry phone, chip entry to the building. Two garage parking spaces included. Deposit for common building charges, concierge service and utilities CZK 6000/month.



* Area of the unit according to the Civil Code. The area consists of the sum total area of the entire unit bounded by perimeter walls.