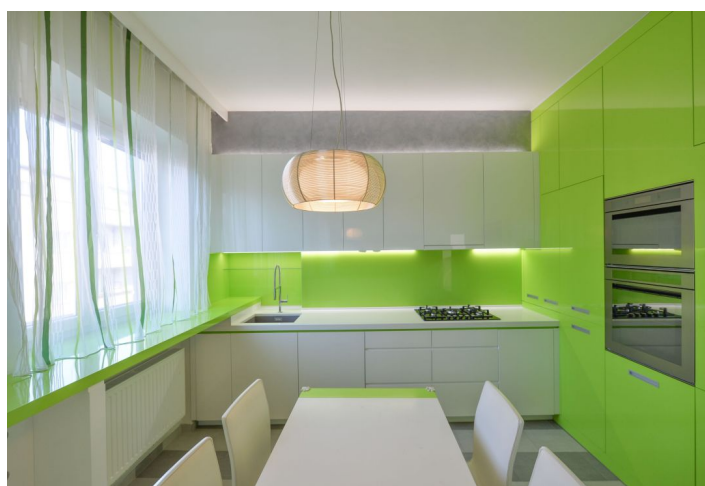
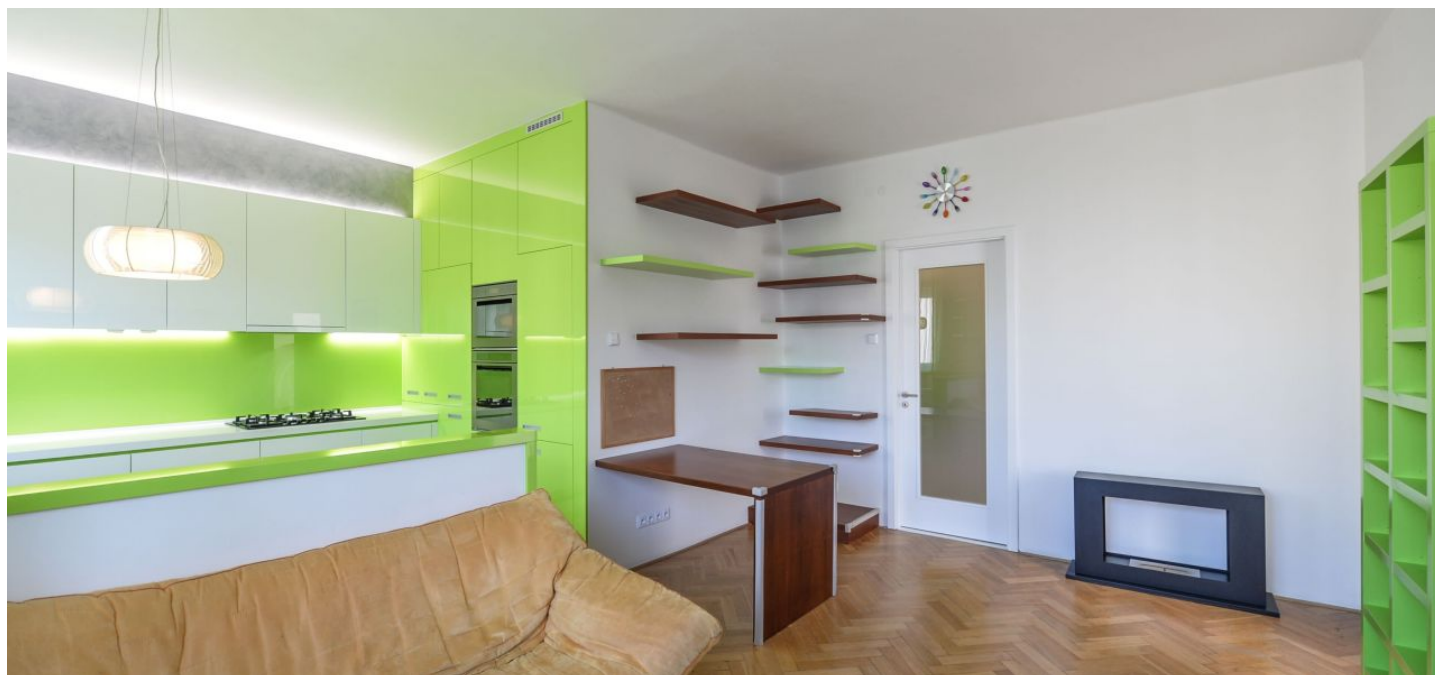




## Apartment Two-bedroom (3+kk)

Rented

75 m², Prague 6, Břevnov, Pod Marjánkou





## Apartment Two-bedroom (3+kk)

**Rented**

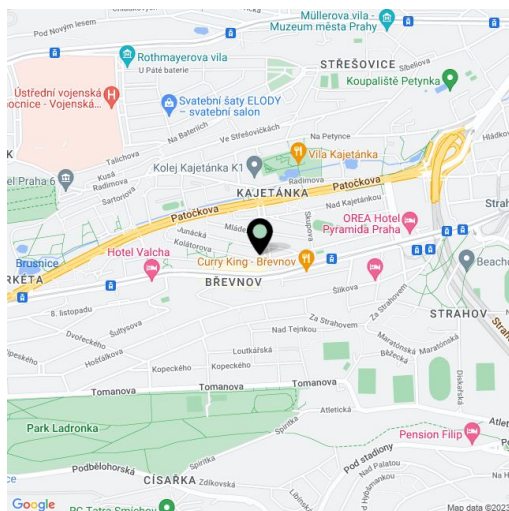
75 m², Prague 6, Břevnov, Pod Marjánkou

Total area	75 m²
Parking	-
Cellar	Yes
PENB	C
Reference number	24832
Available from	Immediately

Bright newly reconstructed furnished 2-bedroom flat situated on the third floor of a residential building with lift. Situated on a quiet street in Břevnov, Prague 6, within easy reach of the Prague Castle and Ladronka Park, with quick connection to metro, the city center, and the airport. Area with complete public amenities including schools, shops, sports facilities and restaurants, convenient to international schools.

The flat includes living room with dining area and a fully fitted open kitchen, two bedrooms with built-in storage, bathroom (sink, walk-in shower, bathtub), a fitted walk-in closet, separate toilet, and entrance hall with built-in storage.

Solid wood parquet floors, tiles, security entry door, central heating, blinds, ethanol fireplace, washer, dryer, dishwasher, microwave oven, TV, satellite reception. Cellar, shared balcony in the mezzanine of the building. Deposit for common building charges and utilities CZK 4000 per month.



\* Area of the unit according to the Civil Code. The area consists of the sum total area of the entire unit bounded by perimeter walls.