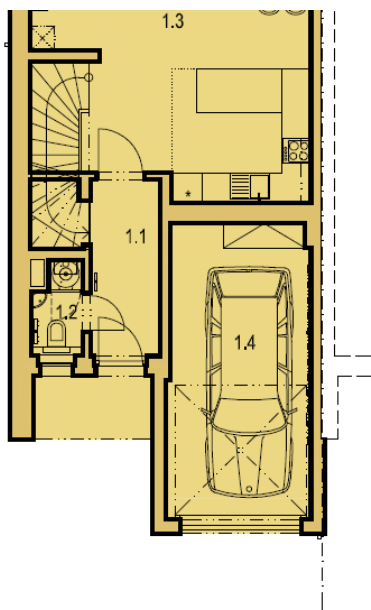




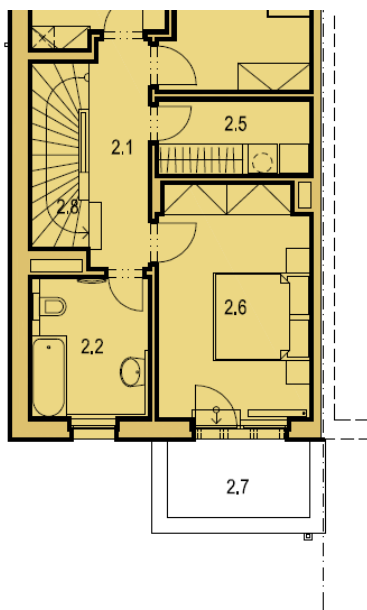
## House Four-bedroom (5+kk)

**Sold**

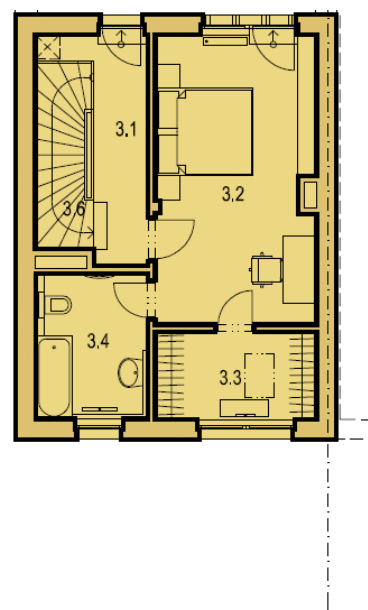
171 m², Prague 9, Horní Počernice



Tabulka místností - 1.NP



Tabulka místností - 2.NP



Tabulka místností - podkroví



## House Four-bedroom (5+kk)

**Sold**171 m<sup>2</sup>, Prague 9, Horní Počernice

Plot	234 m <sup>2</sup>
Foot print	86 m <sup>2</sup>
Garden	149 m <sup>2</sup>
Parking	Garage for 1 car
Garage	Yes
Cellar	Yes
PENB	B
Reference number	24681

**Four-bedroom terraced house is part of a newly emerging project located in a quiet and popular residential area of Horní Počernice. The houses are characterized by practically designed layouts, attractive architecture and a wide selection of different variants of completion according to the client.**

The ground floor will offer an open plan living room with kitchen and garden access, separate toilet, entrance hall, and a garage, accessible from the exterior. On the first floor will be three bedrooms (one of them with terrace), bathroom with toilet, walk in wardrobe, and a staircase hall. The last, second floor will comprise the master bedroom with private walk-in closet, bathroom, and a large terrace.

Future owners will be able to choose from different shades of **quality laminate floating floors, large format tiles** and veneered interior doors. In bathrooms will be Kaldewei, **Grohe**, Vitra or IdealStandard sanitary ware and fixtures. **Above-standard adjustments may also be realized, including for example an elevator, a fireplace, or a wheelchair accessible interior.**

The location offers good access to downtown and complete civic amenities within easy reach. Nearby are kindergartens, schools, high school, shops, sports center, theater, and a general practitioner. Within the development there will be a new and safe playground, other outdoor activities are allowed by an adjacent cycling path connecting to Klánovický forest. Nearby you can also find ponds, Pevnost Hummer entertainment area or the Golf Resort Black Bridge golf course.

Completion scheduled for Q3/Q4 2018.

For a complete list of available houses, please contact our office.

Usable area 170.5 m<sup>2</sup>, built-up area 85.5 m<sup>2</sup>, garden 148.5 m<sup>2</sup>, plot 234 m<sup>2</sup>.