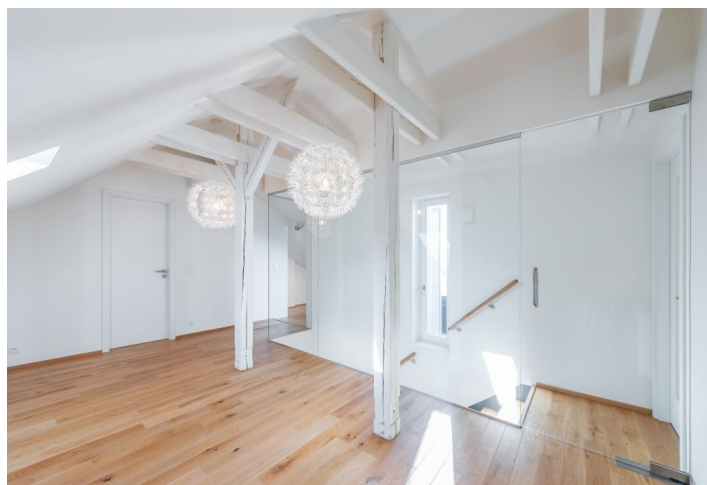
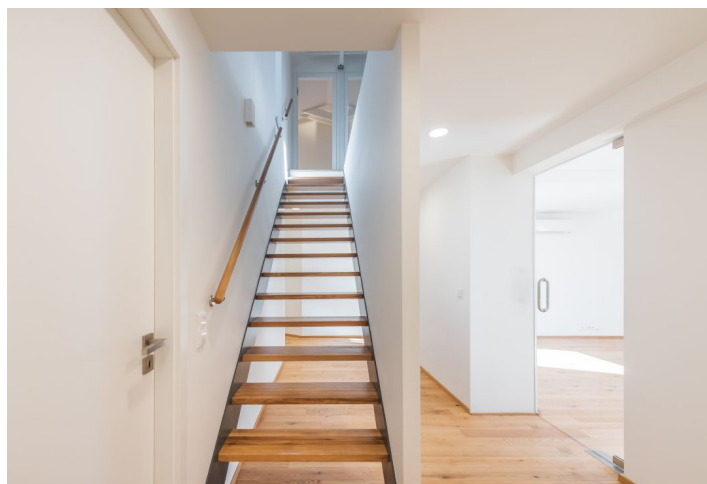




## Apartment Three-bedroom (4+kk)

**Sold**

154 m<sup>2</sup>, Prague 6, Dejvice, Wuchterlova





## Apartment Three-bedroom (4+kk)

**Sold**

154 m², Prague 6, Dejvice, Wuchterlova

Total area	169 m²
Floor area*	154 m²
Terrace	15 m²
Parking	-
Cellar	Yes
PENB	E
Reference number	24624

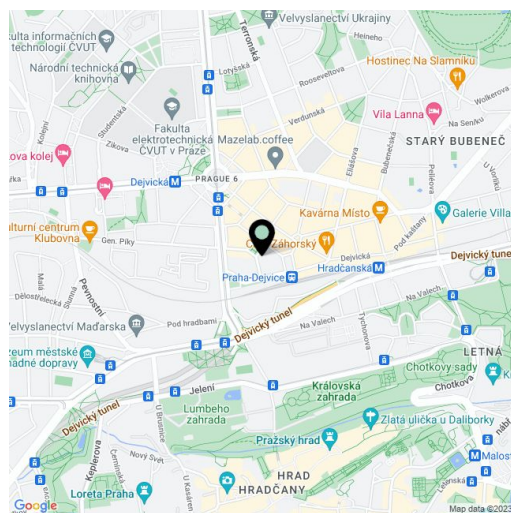
This new split-level attic apartment with a terrace is part of a completely reconstructed corner apartment building boasting great views of the adjacent renovated square. Built in 1932 by the architect Suk, the house is set in an attractive part of Dejvice, just a few minutes' walk from Vítězné náměstí square and near the Prague Castle complex.

The lower level of this apartment on the 5th and 6th floors offers a living room with a dining area and a preparation for a kitchen, a bedroom, a bathroom with a shower, a guest toilet, and an entrance hall. The upper level features a master bedroom with an en-suite bathroom and an adjacent study with terrace access, and an additional bedroom.

Features include **solid oak floors**, ceramic tiles, replicas of the original casement windows and new wooden windows, **interior doors with internal hinges**, a fire safety replica entry door, and Laufen bathroom fixtures. Heating is provided by a central gas boiler room in the building. The purchase price includes a **cellar**, and a **garage parking space** at extra cost.

The house is located in a **popular residential area** with many excellent schools, popular restaurants, and fast connections to the center thanks to the nearby Dejvická and Hradčanská metro stations and tram stops, and also within walking distance of Prague Castle and Stromovka Park.

Floor area 154.1 m², terrace 14.7 m², cellar 3 m².



\* Area of the unit according to the Civil Code. The area consists of the sum total area of the entire unit bounded by perimeter walls.



## Apartment Three-bedroom (4+kk)

**Sold**

154 m<sup>2</sup>, Prague 6, Dejvice, Wuchterlova

