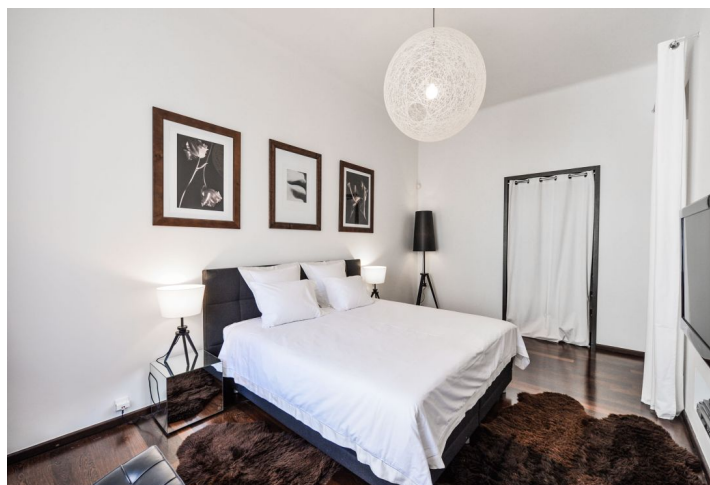




## Apartment Two-bedroom (3+kk)

Rented

130 m², Prague 5, Smíchov, Kořenského





## Apartment Two-bedroom (3+kk)

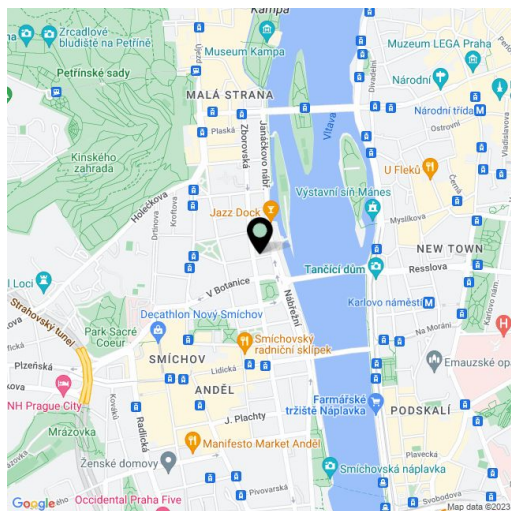
**Rented**130 m<sup>2</sup>, Prague 5, Smíchov, Kořenského

Total area	132 m <sup>2</sup>
Floor area*	130 m <sup>2</sup>
Balcony	2 m <sup>2</sup>
Parking	-
Cellar	-
PENB	G
Reference number	24603
Available from	Immediately

Completely renovated and furnished, this high standard 2-bedroom 2-bathroom flat boasts a balcony and is situated on the second floor of a renovated traditional residential building with a lift and preserved original details. Located just steps from the Vltava River, with quick access to the city center and full amenities. A few minutes' walk from Arbesovo Square tram stop, and within walking distance of the Anděl commercial center and metro station.

The airy interior features a comfortable living room with dining area and a fully integrated open kitchen, a separate master bedroom with a fitted walk-in closet, an en-suite bathroom (walk-in shower, bathtub, toilet) and balcony facing a green landscaped courtyard, and second bedroom off the living room. There is also a shower bathroom, guest toilet, utility room, and a spacious entrance hall.

Air-conditioning, high ceilings, large windows, hardwood floors, security entry door, built-in storage, gas boiler, washer, dishwasher, microwave oven, dishes and kitchenware, TV, alarm connected to a security agency. Deposit for common building charges and water around CZK 3500 per month. Gas and electricity are billed separately.



\* Area of the unit according to the Civil Code. The area consists of the sum total area of the entire unit bounded by perimeter walls.