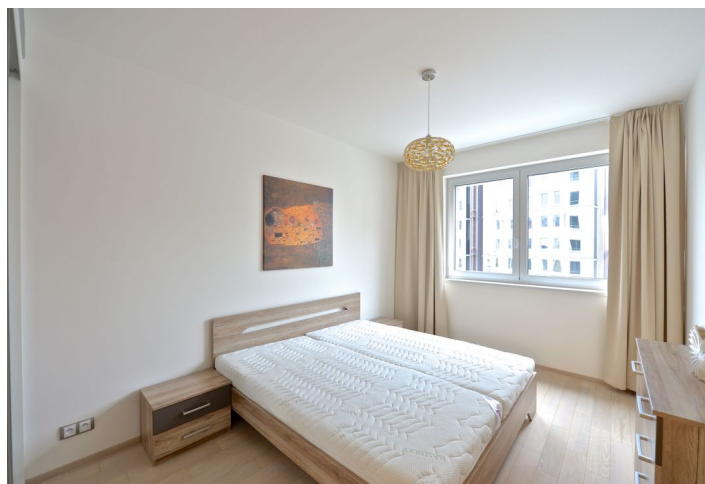




## Apartment One-bedroom (2+kk)

Rented

59 m², Prague 2, Vinohrady, Rubešova





## Apartment One-bedroom (2+kk)

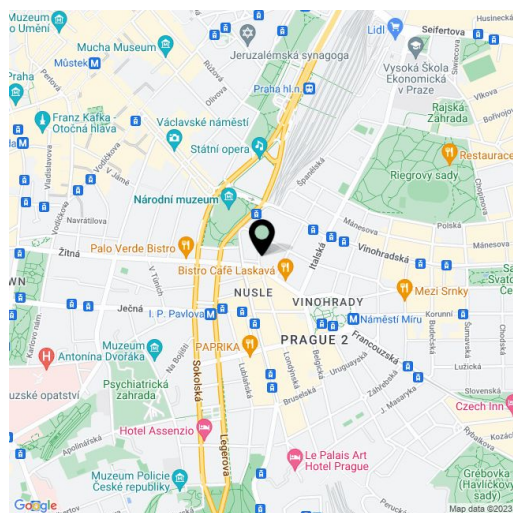
**Rented**59 m<sup>2</sup>, Prague 2, Vinohrady, Rubešova

Total area	59 m <sup>2</sup>
Parking	On-site garage parking.
Garage	Yes
Cellar	Yes
PENB	B
Reference number	24353
Available from	Immediately

Benefiting from a central location right behind the National Muzeum and the Czech Radio building, this brand new air-conditioned 1-bedroom flat is situated on the second floor of the newly built residential project **Rezidence u Muzea**, with underground parking. Attractive location on the edge of the popular Vinohrady neighborhood just minutes from Wenceslas Square and Muzeum metro station (lines A and C), with full amenities in the immediate neighborhood.

The interior features one bedroom with built-in wardrobes, living room with a fully fitted open kitchen with a breakfast bar, bathroom (bathtub with a shower screen, sink, toilet), laundry / utility room, and entry hall with more built-in wardrobes.

Oak floors, tiles, floor heating, security entry door, outdoor blinds, washer, dryer, dishwasher, microwave oven, alarm, video entry phone, cellar, pram / bike storage in the building. One parking space available at CZK 3000/month. Deposit for common building charges, water and heating CZK 2400/month. Electricity is billed separately.



\* Area of the unit according to the Civil Code. The area consists of the sum total area of the entire unit bounded by perimeter walls.