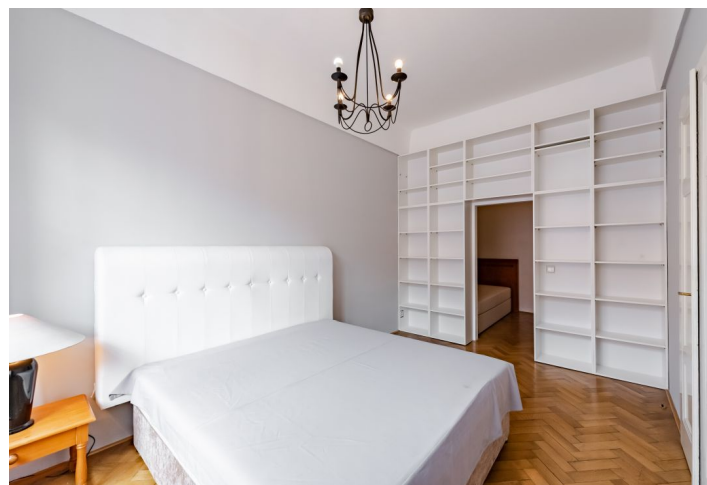




## Apartment One-bedroom (2+1)

Rented

92 m<sup>2</sup>, Prague 1, Josefov, Elišky Krásnohorské





## Apartment One-bedroom (2+1)

**Rented**

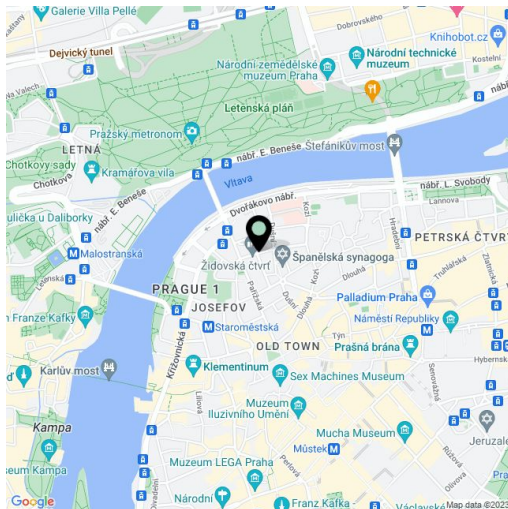
92 m², Prague 1, Josefov, Elišky Krásnohorské

Total area	95 m²
Floor area*	92 m²
Balcony	3 m²
Parking	-
Cellar	-
PENB	E
Reference number	24123
Available from	Immediately

Benefiting from a prestigious location, this renovated 1-bedroom flat with a balcony and lots of preserved original details is on the fifth floor of a reconstructed traditional building with lift. Centrally located just moments from the Old Town Square, the luxurious Pařížská street and the Vltava embankment, one of the most sought-after locations in Prague. A range of quality shops, restaurants and bars in the immediate neighborhood, on street resident parking, five minutes to Staroměstská metro.

The interior includes a fully fitted and equipped open kitchen with balcony facing the courtyard, a comfortable living room, one bedroom with a large walk-through clothes closet, a windowed bathroom with a double sink, corner bathtub and shower screen, a separate toilet, utility room, and a spacious central entrance hall.

High ceilings, large windows, solid wood parquet floors, tiles, security entry door, blinds, built-in storage, gas boiler, washer, dishwasher. Common building charges and water CZK 1500/month. Electricity and gas are billed separately (transfer to the tenant).



\* Area of the unit according to the Civil Code. The area consists of the sum total area of the entire unit bounded by perimeter walls.