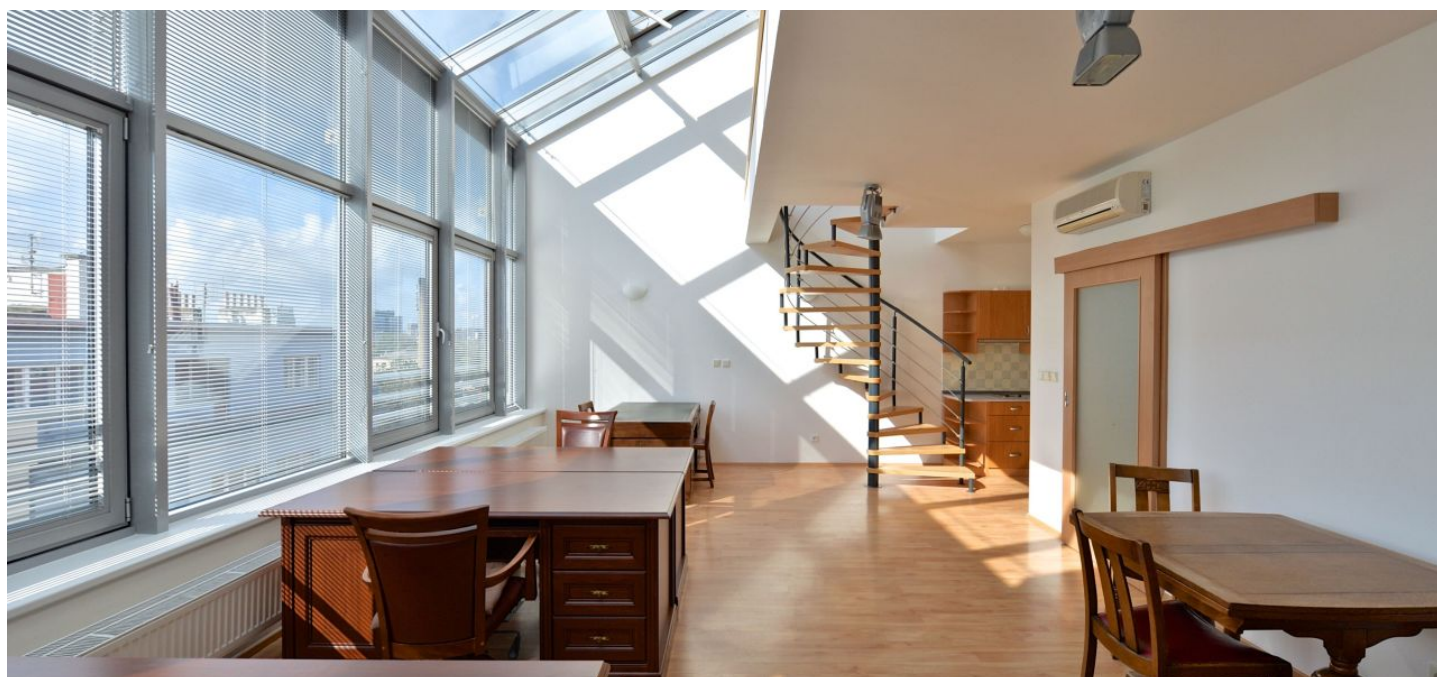




## Apartment Two-bedroom (3+kk)

Sold

99 m², Prague 8, Libeň, Na Kopečku





## Apartment Two-bedroom (3+kk)

**Sold**

99 m², Prague 8, Libeň, Na Kopečku

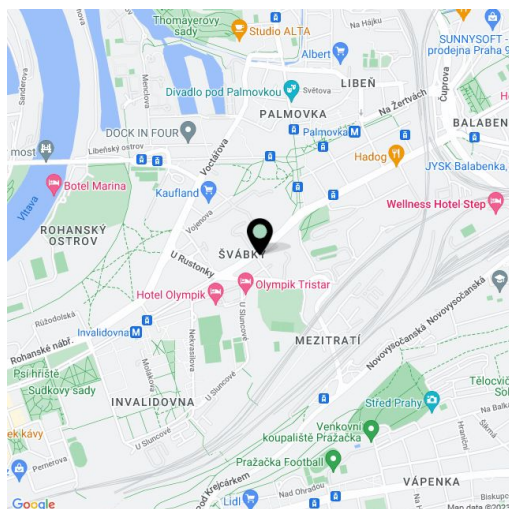
Total area	99 m²
Parking	-
Cellar	-
Service price	3 700 CZK monthly
PENB	G
Reference number	23881

Atypical 1-bedroom split-level attic flat with huge atelier windows situated on the 6th floor of a building with lift and underground parking, on the edge of a local park. Located in a quiet part of Prague 8 with quick connections to the city center and full amenities in the area, within walking distance of Palmovka and Invalidovna metro stations and trams. Driving range and tennis courts nearby.

The lower level offers a generous **air-conditioned living room** with dining area and a fitted open kitchen, shower bathroom with toilet, utility / storage room, and entry hall. The upper floor offers a large air-conditioned gallery, one bedroom, and shower bathroom with toilet.

Equipped with laminated floors, tiles, security entry door, blinds. Heating provided by a central boiler room in the building.

Common building charges, water and heating around CZK 3700/month. Interior 98.51 m²



\* Area of the unit according to the Civil Code. The area consists of the sum total area of the entire unit bounded by perimeter walls.