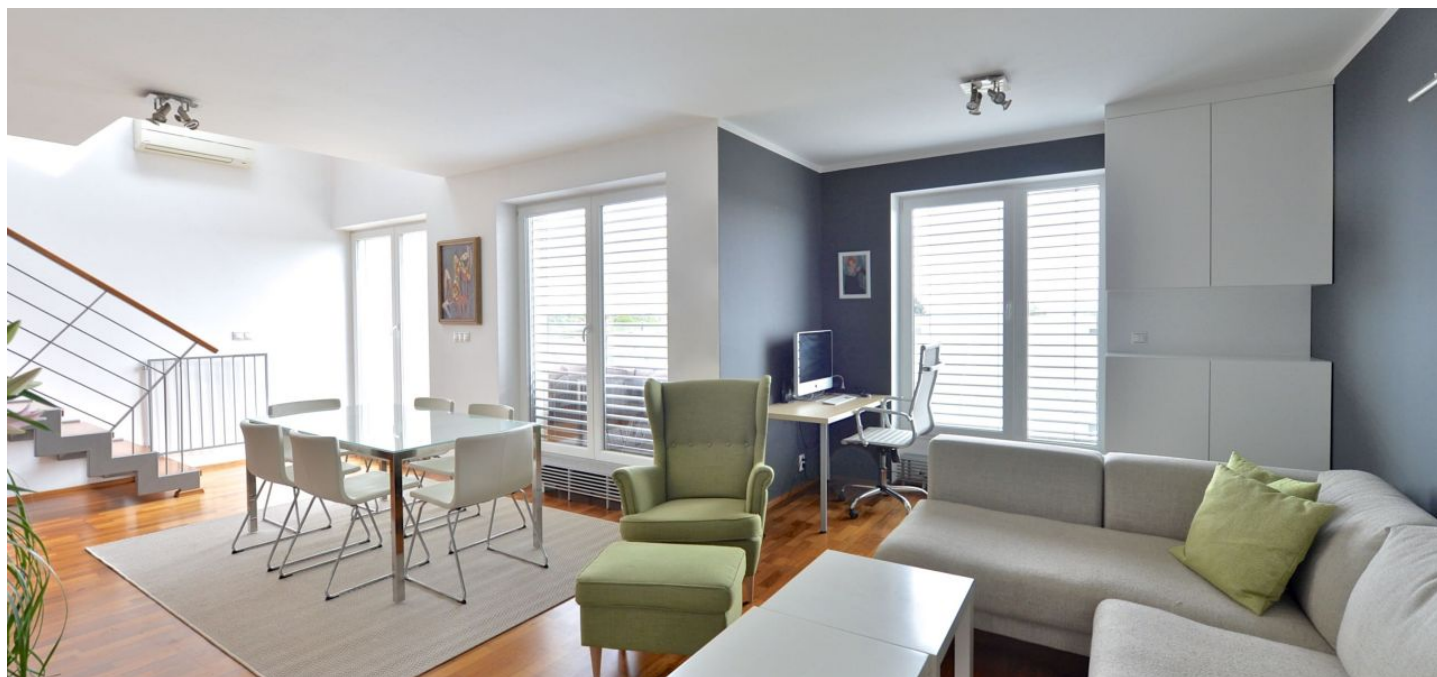




## Apartment Two-bedroom (3+kk)

**Sold**

120 m<sup>2</sup>, Prague 6, Suchdol, Suchdolské náměstí





## Apartment Two-bedroom (3+kk)

**Sold**120 m<sup>2</sup>, Prague 6, Suchdol, Suchdolské náměstí

Total area	129 m <sup>2</sup>
Floor area*	120 m <sup>2</sup>
Terrace	9 m <sup>2</sup>
Parking	1 garage parking space
Garage	Yes
Cellar	Yes
Service price	4 600 CZK monthly
PENB	G
Reference number	23751

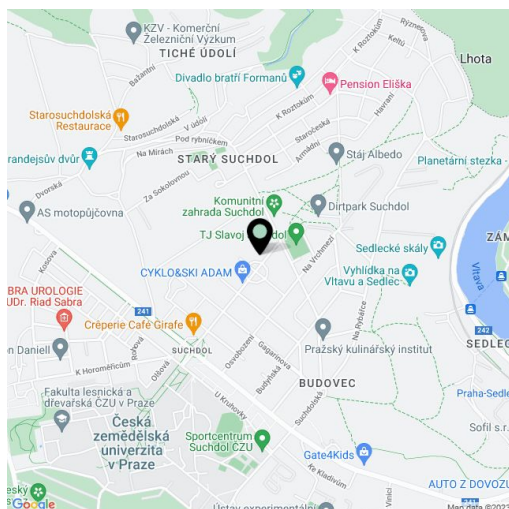
**Air-conditioned, south-facing duplex apartment with a terrace overlooking the city skyline and mature greenery, located on the 3rd and 4th floors of a residential building from 2008 with an elevator and underground garage. Pleasant residential location near Tiché údolí valley, with good access to the Metro and the airport.**

The lower floor of the apartment consists of a living room with kitchen, dining area and terrace, a separate toilet / laundry room and hallway with built-in wardrobes. The upper floor comprises 2 bedrooms and bathroom with bathtub, shower, toilet and bidet.

Amenities include **air-conditioning, hardwood floors**, ceramic tiles, plastic windows and Velux wooden skylights, a fully equipped kitchen with built-in wine fridge, electric awning on the patio, security entrance door – both for the flat and cellar. The purchase price includes all the furniture shown in the photographs, **1 parking space in the underground garage** and a **cellar**. Possibility to rent additional parking space.

The apartment is located one-minute on foot from a bus stop with an eleven-minute connection to the subway and complete civic amenities in Dejvice. Within easy walking distance of the flat you can find a kindergarten, cafe, restaurant, playground and pharmacy, in the nearby campus is a swimming pool and sports center.

Interior 120 m<sup>2</sup>, 9 m<sup>2</sup> terrace, cellar.



\* Area of the unit according to the Civil Code. The area consists of the sum total area of the entire unit bounded by perimeter walls.