



## Apartment Two-bedroom (3+kk)

Rented

79 m², Prague 8, Libeň, V zahradách





## Apartment Two-bedroom (3+kk)

**Rented**

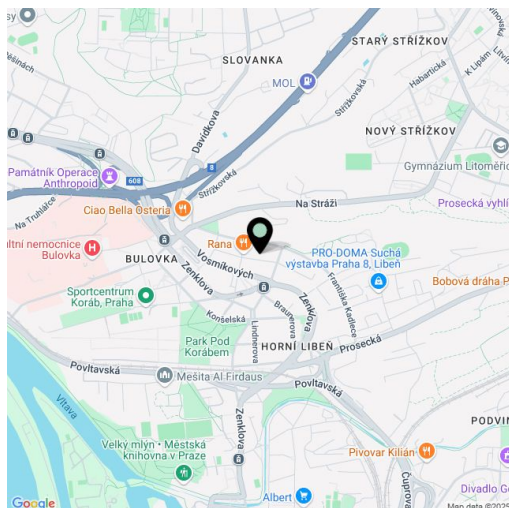
79 m², Prague 8, Libeň, V zahradách

Total area	79 m²
Parking	Garage parking.
Garage	Yes
Cellar	Yes
Service price	Monthly deposit for services incl. Internet and utilities around CZK 8,000 for 2 persons.
PENB	B
Reference number	23747
Available from	01.04.2026

**Tastefully furnished apartment with green views of the Prosecké Skály Rocks, situated on the 4th floor of the Studánka Residence project with underground parking. Located in a quiet street in Prague 8, Libeň, with quick access to the city center and amenities. Tram connections to the metro ( nearest station Kobylisy), convenient to the Mladá Boleslav and Hradec Králové highways.**

The interior features a living room with a fully fitted open plan kitchen and breakfast bar, two separate bedrooms, a marble bathroom with a walk-in shower, double sink, and toilet, a guest toilet, and an entrance hall.

High-quality materials and equipment, custom-made furniture, laminate floors, large windows, security entry door, built-in wardrobes and storage, blinds, gas boiler, washer, dryer, dishwasher, elevator, 6 m² cellar, bike storage in the building. One large parking space included.



\* Area of the unit according to the Civil Code. The area consists of the sum total area of the entire unit bounded by perimeter walls.