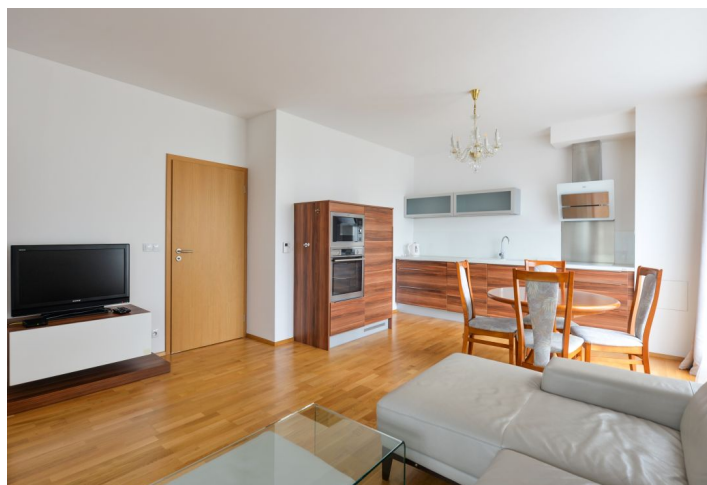




Apartment Two-bedroom (3+kk)

65 m², Prague 5, Smíchov, Pod Stadiony

Rented





Apartment Two-bedroom (3+kk)

Rented

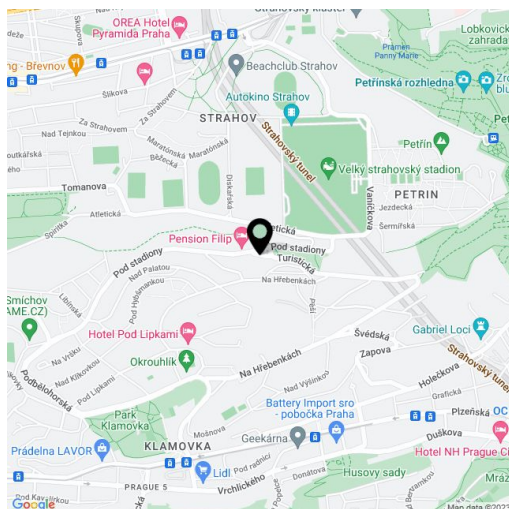
65 m², Prague 5, Smíchov, Pod Stadiony

Total area	73 m²
Floor area*	65 m²
Balcony	8 m²
Parking	Garage parking.
Garage	Yes
Cellar	Yes
PENB	C
Reference number	23372
Available from	Immediately

Benefiting from a quiet green location, this furnished 2-bedroom flat with an 8 m² terrace is on the third floor of a contemporary building with a gated back garden and underground parking. Located in a Prague 5 residential area with quick connections to the city center, in close vicinity of the Skalka natural preserve, and convenient to Anděl metro and commercial center. Bus stops in front of the building.

The interior includes a bright living room with a fully fitted open kitchen and a covered terrace, two separate bedrooms facing the garden, bathroom with both a bathtub and a walk-in shower, toilet, utility room, and entrance hall.

Wooden floating floors, security entry door, French windows, blinds, washer, dishwasher, microwave oven, TV, audio entry phone, cellar, lift. One garage parking space included. Common building charges and internet CZK 3000/mo. Electricity is billed extra. Available from April 2021.



* Area of the unit according to the Civil Code. The area consists of the sum total area of the entire unit bounded by perimeter walls.