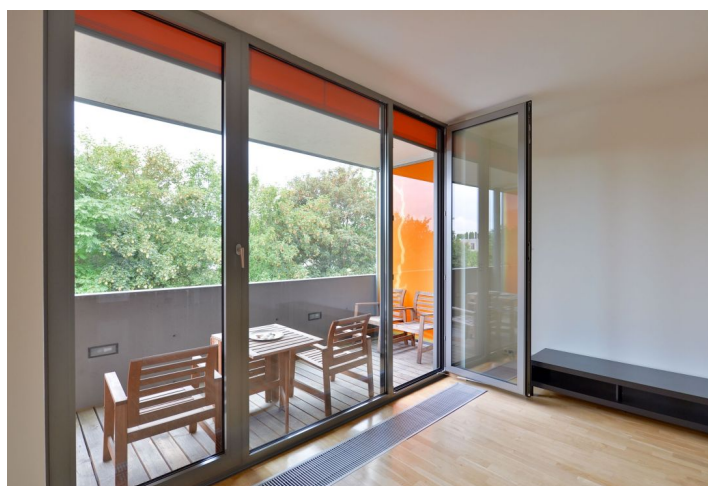




Apartment One-bedroom (2+kk)

Sold

68 m², Prague 6, Břevnov, Běžecká





Apartment One-bedroom (2+kk)

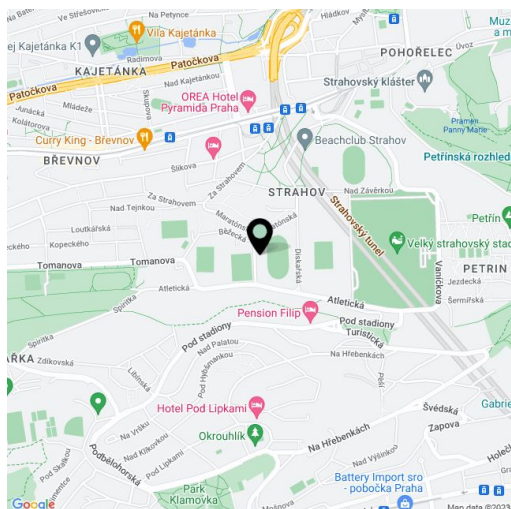
Sold68 m², Prague 6, Břevnov, Běžecká

Total area	76 m ²
Floor area*	68 m ²
Loggia	8 m ²
Parking	1 garage parking space
Garage	Yes
Cellar	-
Service price	3 000 CZK monthly
PENB	G
Reference number	23006

1-bedroom duplex apartment with enclosed balcony overlooking greenery, situated on the first floor of a modern residential complex in Strahov, just a few minutes' drive to the French Lyceum, within easy reach of Ladronka Park and Strahov sports grounds. Quiet and sought-after location with easy access downtown.

The entrance to the apartment is on the ground floor; there is a small hallway, with stairs leading to the 1st floor, consisting of a west-oriented living room with dining area, kitchen, large windows & balcony, an east-facing bedroom, bathroom with bathtub and toilet, and a central corridor. Equipment includes **wooden floors**, ceramic tiles, wooden windows, solid wood and veneered interior doors, security entry door, underfloor central heating provided by a boiler room in the house. Ceiling height of 2.7 meters. The purchase price includes **1 garage parking space**. The building approval took place in 2007.

Interior 68 m², enclosed balcony 8 m².



* Area of the unit according to the Civil Code. The area consists of the sum total area of the entire unit bounded by perimeter walls.