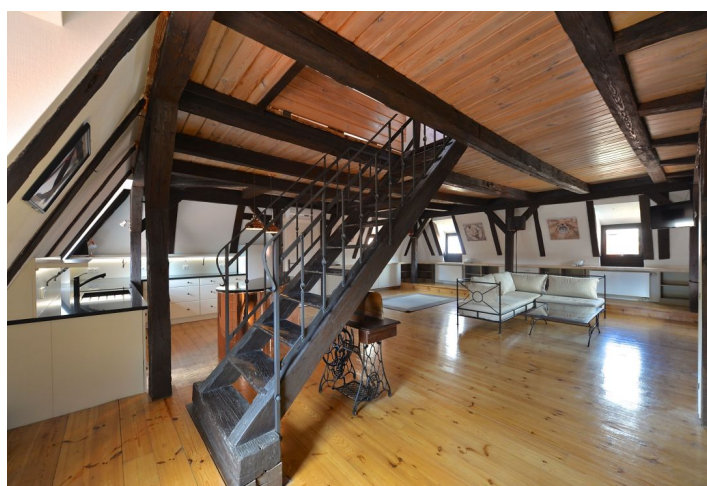
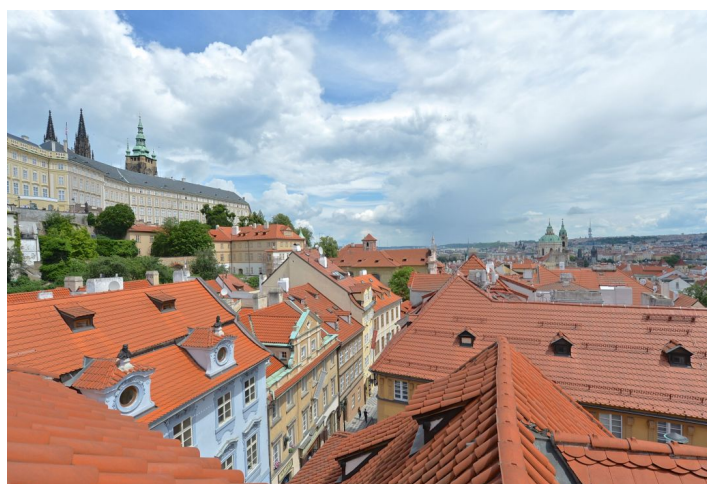




Apartment Three-bedroom (4+kk)

Rented

160 m², Prague 1, Malá Strana, Nerudova





Apartment Three-bedroom (4+kk)

Rented

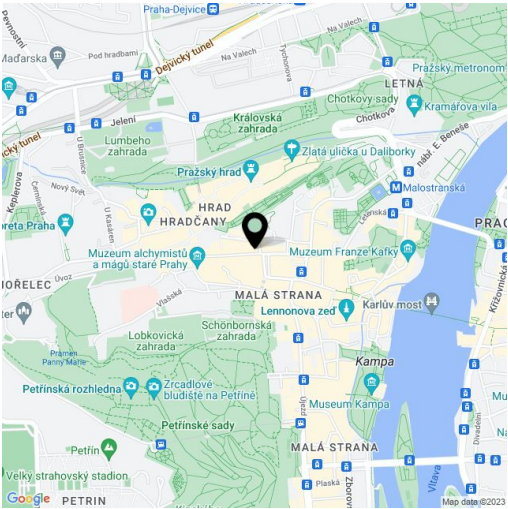
160 m², Prague 1, Malá Strana, Nerudova

Total area	160 m²
Parking	-
Cellar	Yes
PENB	G
Reference number	22823
Available from	Immediately

Boasting unique panoramic views of the Petřín Hill, the Prague Castle and the Malá Strana neighborhood, this is an exclusive furnished 3-bedroom 2-bathroom 3-level attic flat. This romantic flat is situated on the third floor of a Baroque palace from 1765 that has undergone complete reconstruction featuring a wide timber staircase with Baroque statues, rich decorations in the common areas and a cozy shared courtyard. Located just steps from the Prague Castle and Petřín Hill, just a short walk from the Charles Bridge and Malostranské (Lesser Town) Square with tram links, one stop from Malostranská metro station.

Lowest level: entrance hall with lots of built-in wardrobes and storage, one bedroom, shower bathroom with toilet, laundry / utility room. Main level: spacious air-conditioned living room with a modern fully fitted open kitchen, one bedroom, bathroom with bathtub and toilet, study / walk-in closet. Top floor: master bedroom with built-in storage. The flat features lots of built-in storage and various atmospheric nooks and crannies - perfect as reading spots or napping areas, and views virtually 360 degrees around.

Preserved original details, solid wood floors, original exposed timber beams, new gas boiler, technistone kitchen top, washer, dryer, dishwasher, fold out sofa, TV, audio entry phone, large attic storage space, cellar. No lift. Independent water, gas and electricity meters. Common building charges and deposit for utilities are billed separately.



* Area of the unit according to the Civil Code. The area consists of the sum total area of the entire unit bounded by perimeter walls.