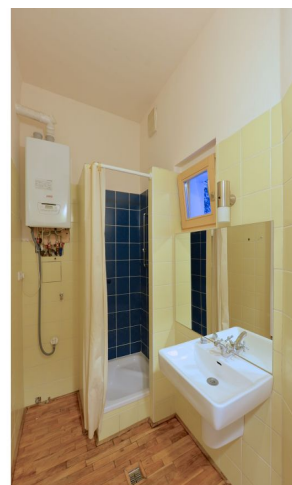




Apartment One-bedroom (2+kk)

Rented

60 m², Prague 6, Břevnov, Šlikova





Apartment One-bedroom (2+kk)

Rented

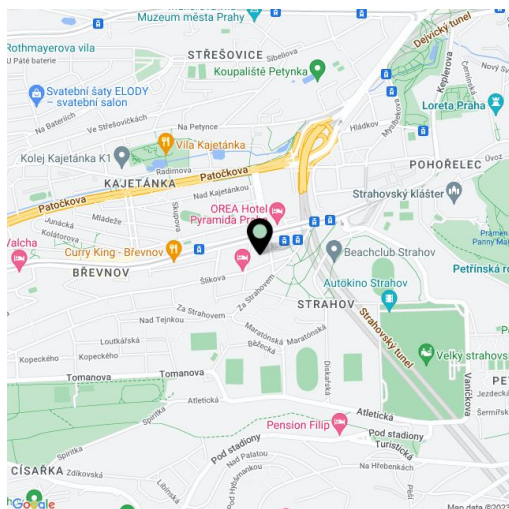
60 m², Prague 6, Břevnov, Šlikova

Total area	60 m²
Parking	-
Cellar	-
PENB	G
Reference number	22624
Available from	Immediately

Partly reconstructed unfurnished 1-bedroom flat with preserved original details, situated on the third floor of a renovated traditional building with a large shared courtyard and no lift. Quiet residential area with great amenities and quick access to the city center, about a ten minute walk to the Prague Castle. Convenient to the popular Ladronka park and the airport.

The interior includes an open entry hall with a fully fitted kitchen, living room, shower bathroom off of the kitchen, one bedroom facing the courtyard, walk-in closet / storage room in the bedroom, and a separate toilet.

Oak floors, security entry door, large windows, renovated interior doors, washer, quality kitchen appliances incl. a dishwasher, new gas boiler, audio entry phone. Common balcony in the mezzanine of the building. UNFURNISHED, can be furnished at a higher rent. Common building charges and water CZK 2300 per month. Gas and electricity are billed separately.



* Area of the unit according to the Civil Code. The area consists of the sum total area of the entire unit bounded by perimeter walls.