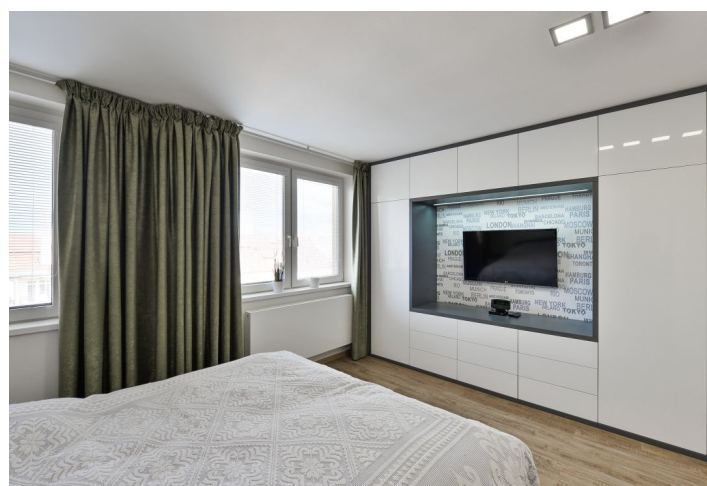




## Apartment One-bedroom (2+kk)

Rented

91 m<sup>2</sup>, Prague 2, Vinohrady, Moravská





## Apartment One-bedroom (2+kk)

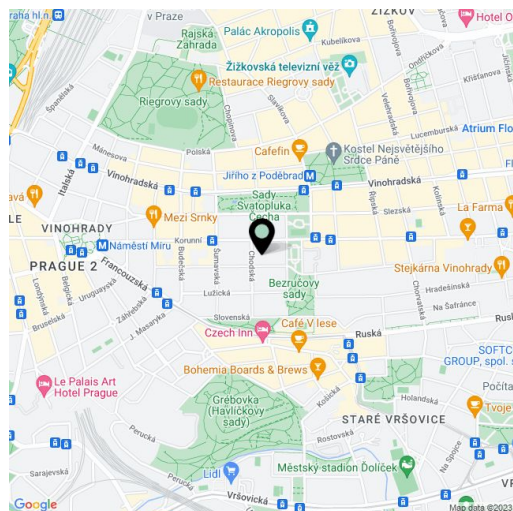
**Rented**91 m<sup>2</sup>, Prague 2, Vinohrady, Moravská

Total area	91 m <sup>2</sup>
Parking	-
Cellar	-
PENB	G
Reference number	22454
Available from	Immediately

This fully reconstructed fully furnished 1-bedroom 2-bathroom split-level attic flat is on the fourth floor of a traditional residential building with lift. Located in a quiet street in the popular Vinohrady residential neighborhood, with Bezručovy Sady Park close by and full amenities incl. restaurants, sidewalk cafes, theaters, shops, clubs, etc. Quick public transportation connections, just one tram stop or a few min. walk from Náměstí Míru metro station, within walking distance of Wenceslas Square.

The lower level features living room with dining area and a fully fitted open kitchen, shower bathroom with toilet, storage room, and entry hall with built-in wardrobes. The upper floor includes one bedroom with built-in wardrobes and storage, facing the green landscaped courtyard, bathroom with bath, toilet, and hall with more storage.

Large windows, blinds, vinyl floors, tiles, built-in storage, washer, dishwasher, microwave oven, fold out sofa, four TV sets, WiFi Internet, satellite reception. Common building charges, deposit for utilities, satellite and the Internet CZK 7230/month. Available upon agreement.



\* Area of the unit according to the Civil Code. The area consists of the sum total area of the entire unit bounded by perimeter walls.