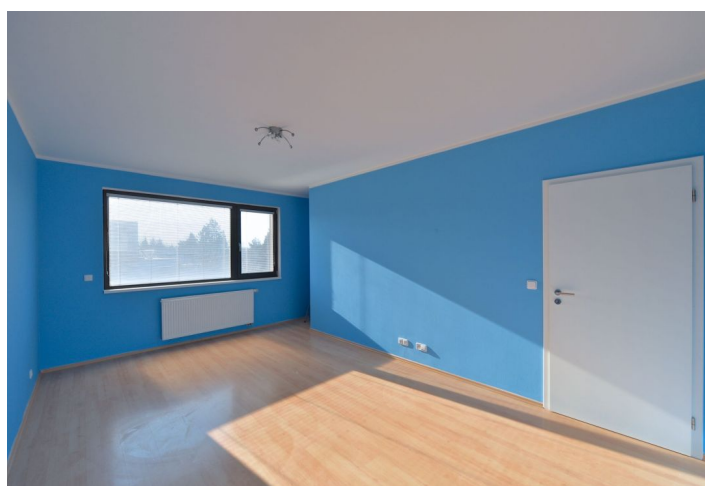




House Two-bedroom (3+kk)

110 m², Prague 4, Kunratice, Na Lhotech

Rented





House Two-bedroom (3+kk)

Rented110 m², Prague 4, Kunratice, Na Lhotech

| | |
|------------------|---------------------------------|
| Plot | 208 m ² |
| Parking | Garage and parking on the plot. |
| Garage | Yes |
| Cellar | - |
| PENB | G |
| Reference number | 21558 |
| Available from | Immediately |

Benefiting from close proximity to the popular Kunratický Forest (300 m), this is an unfurnished 2-bedroom town house with a small back garden and terrace. Situated in a quiet residential area in Prague 4 with lots of greenery, and a playground, health center and English kindergarten nearby. A ten minute walk to the nearest metro station and the Chodov shopping center. Convenient to the D1 highway and Prague 4 international schools (EISP, PBS and the Czech-British Elementary School).

The ground floor includes a fully fitted open kitchen and living room with dining area, both with French windows leading to the terrace and garden. There is an entry hall, guest toilet and garage access. The upper floor offers two bedrooms, bathroom with tub, bidet and toilet, and utility area.

Laminated floors, tiles, large French windows, storage, floor heating in the bathroom, blinds, dishwasher, automatic garage door. Single garage plus one parking space in front of the house included. Utilities around CZK 4500 per month. Available from 1st of July 2020.

